

Applications

Brio's new Open Square Rail Timber is an ideal internal system for residential and commercial applications of timber panels with exposed hangers and rail.

Open Square Rail Timber 150 hangers are 304 stainless steel with precision

Panel Specification

Track System:

For Individual Panels:

Max Panel Height	3000mm
Max Panel Width	2000mm
Max Panel Weight	150kg
Panel Thickness	35-44mm

Open Square Rail Timber 150

Standard Packs

Packs includes 2 hangers, doorstops, handle, brackets and fixings

Pack No.

OST150

Max Panel Width

2000mm

Hardware Specification

Track:

150SR

Material

Stainless Steel

Standard lengths

2000mm, 2500mm, 3000mm and 4000mm

Guides:

Stainless steel sawcut guide 531T

Stainless precision bearing 106E/94

Nylon spring loaded guide 108N/814

Channels:

Polypropylene 94P Black

Aluminium 94PPA Aluminium Support & Polypropylene

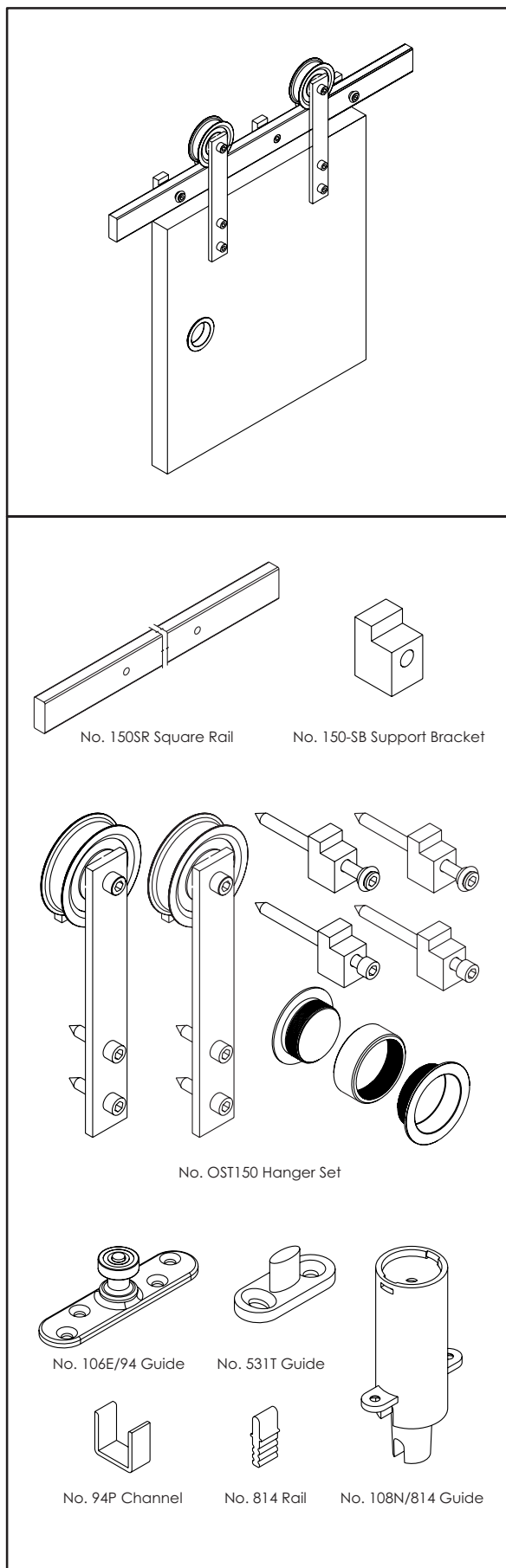
814 Aluminium Rail

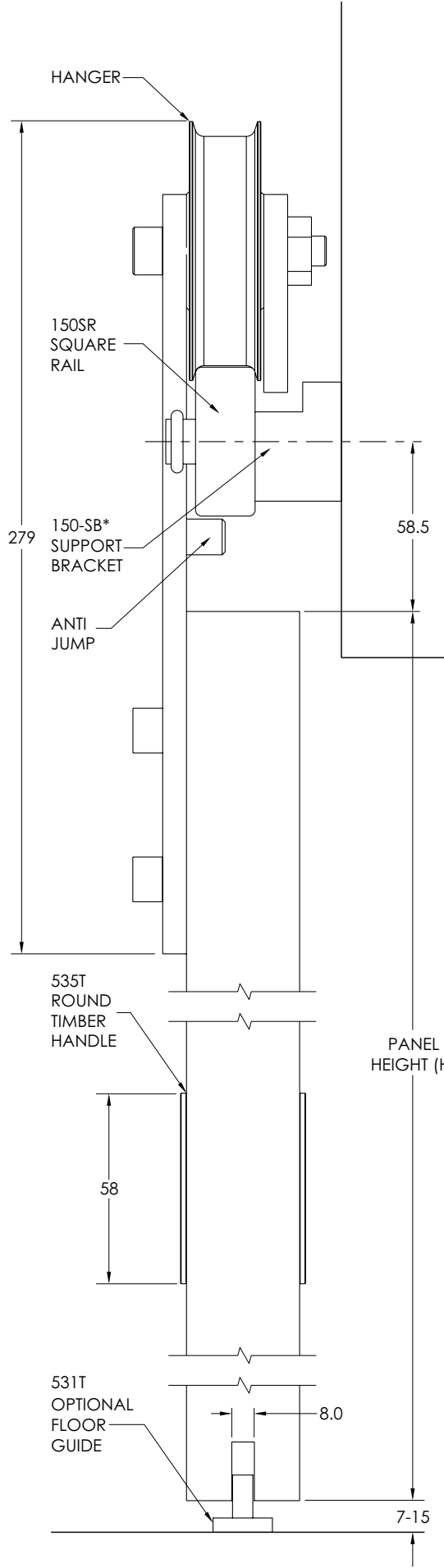
Finish Aluminium - Mill or Clear Anodised

Standard lengths 2000mm, 3000mm, 4000mm and 6000mm

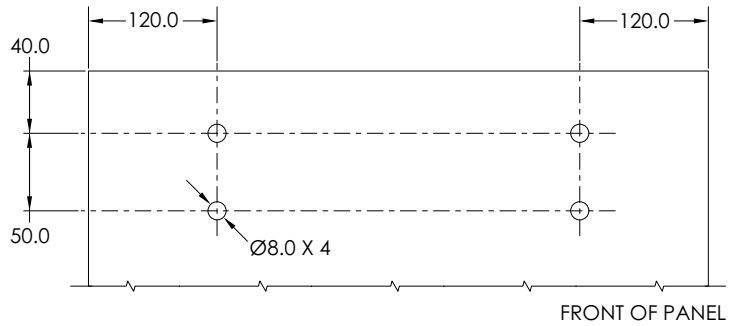
Support Bracket:

Support bracket 150-SB

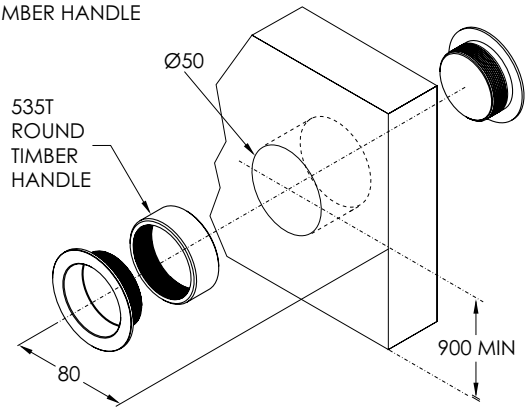




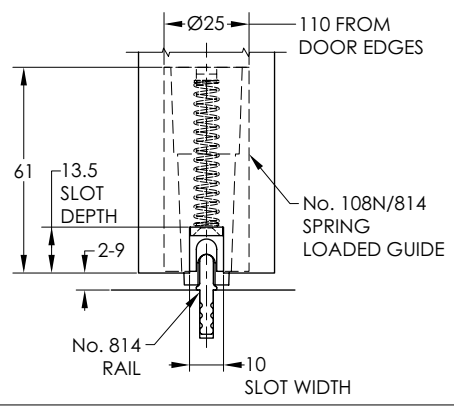
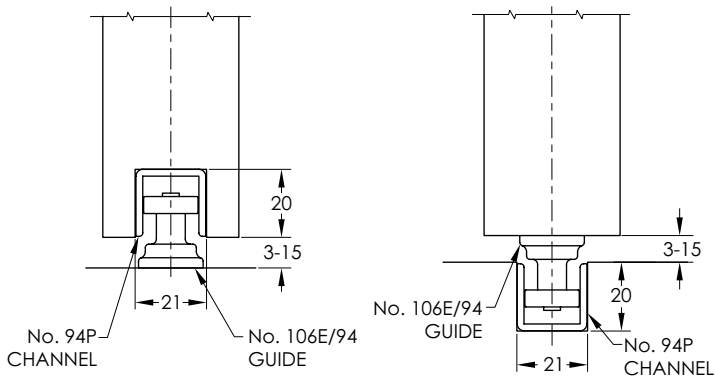
PANEL PREPARATION



ROUND TIMBER HANDLE



OPTIONAL GUIDES



RAIL LENGTH	*ADDITIONAL 150-SB REQUIRED
2500mm	1
3000mm	2
4000mm	4