

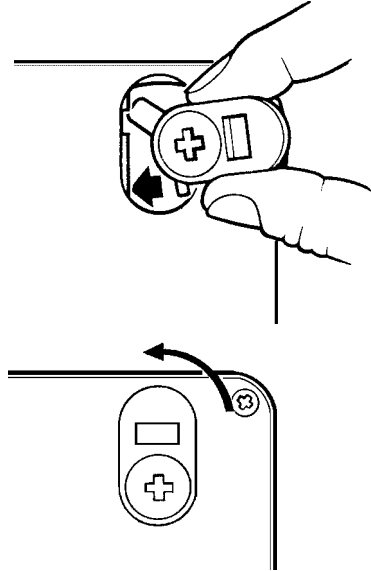


990 Mortice Lock (S & D Series) Installation Instructions

FITTING INSTRUCTIONS FOR No. 7A CAM (FOR FUNCTIONS WITH A TURN)

IMPORTANT: This must be done before fitting the lock to the door.

- 1 Remove cylinder retaining screw.
- 2 Take the no. 7a cam between thumb and finger as shown (with the large central tongue held fully up) and insert sideways into cam seating.
- 3 Turn the cam 90° to drop into seating.
- 4 Insert cylinder retaining screw to secure in place.



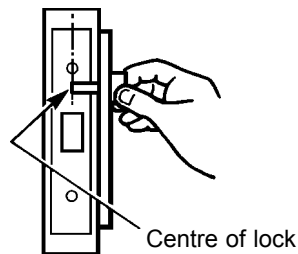
MORTICE INSTRUCTIONS

- 1 Cut mortice slot using template overleaf for correct size.
- 2 Fit lock into mortice, scribe around forend and remove wood to allow flush fit to door.
- 3 Remove lock and use template overleaf to mark and drill holes to suit lock function.

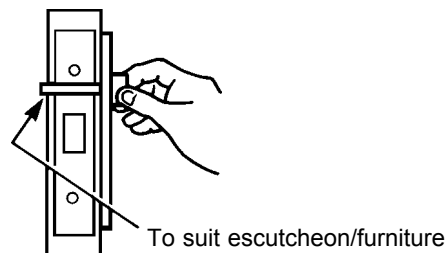
CAUTION: do not drill holes right through the door. The escutcheon/furniture may not cover any holes that are incorrectly drilled.

FITTING OF TURN - CUT AS PER DIAGRAM

Turn with Emergency Release



All functions except Emergency Release



Allegion (Australia) Pty Ltd
Phone 1800 098 094
Website www.allegion.com.au

Allegion (New Zealand) Limited
Phone 0800 477 869
Website www.allegion.co.nz

12/2013



TEMPLATE 990 MORTICE LOCK - D & S SERIES

