

Batten options

1. Treated timber battens should have castellated profile to permit air passage and minimum 15° slope edge to shed water.

Impervious barrier (MDPE) or similar tape between cladding and batten.
To comply with NZBC E2/AS1 - table 23.

Note:

Some machining of vertical battens may be required to avoid "build up".
i.e. back flashings / tapes

2. Cavity plastic Batten

Note:

packing/shims may be needed to ensure boards are fitted flat without distortion.

* Additional timber may be required at soffit to support UA 5831 Soffit Base.

Note: Important

Underlay strips to isolate aluminium from treated timber battens 50 mm wide medium density polyethylene (MDPE)

To comply with NZBC E2/AS1 - table 23. Properties of roofing underlays and wall underlays, separates aluminium components and accessories from timber battens treated with copper-based treatments in NZS 3604.

Cavity closers required as per NZBC clause E2/AS1 (section 9.1.8)

0.9 x 90mm Aluminium Track Flashing.
Alternatively use Dynex Dynafash.

ULLTRACLAD[®]
ALUMINIUM WEATHERBOARDS

ULLRICH ALUMINIUM CO LTD
PO Box 98 843 Manukau City Auckland 2241
118 Wiri Station Road Wiri 2104 New Zealand
TL 09 262 6262 Ext. 814 Mob 021 541 563

www.ulltracalad.co.nz

© ULLRICH ALUMINIUM - All Rights Reserved

V00

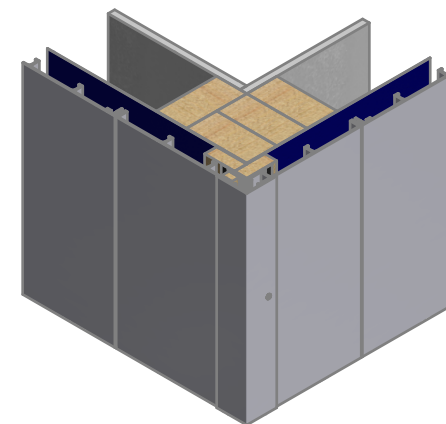
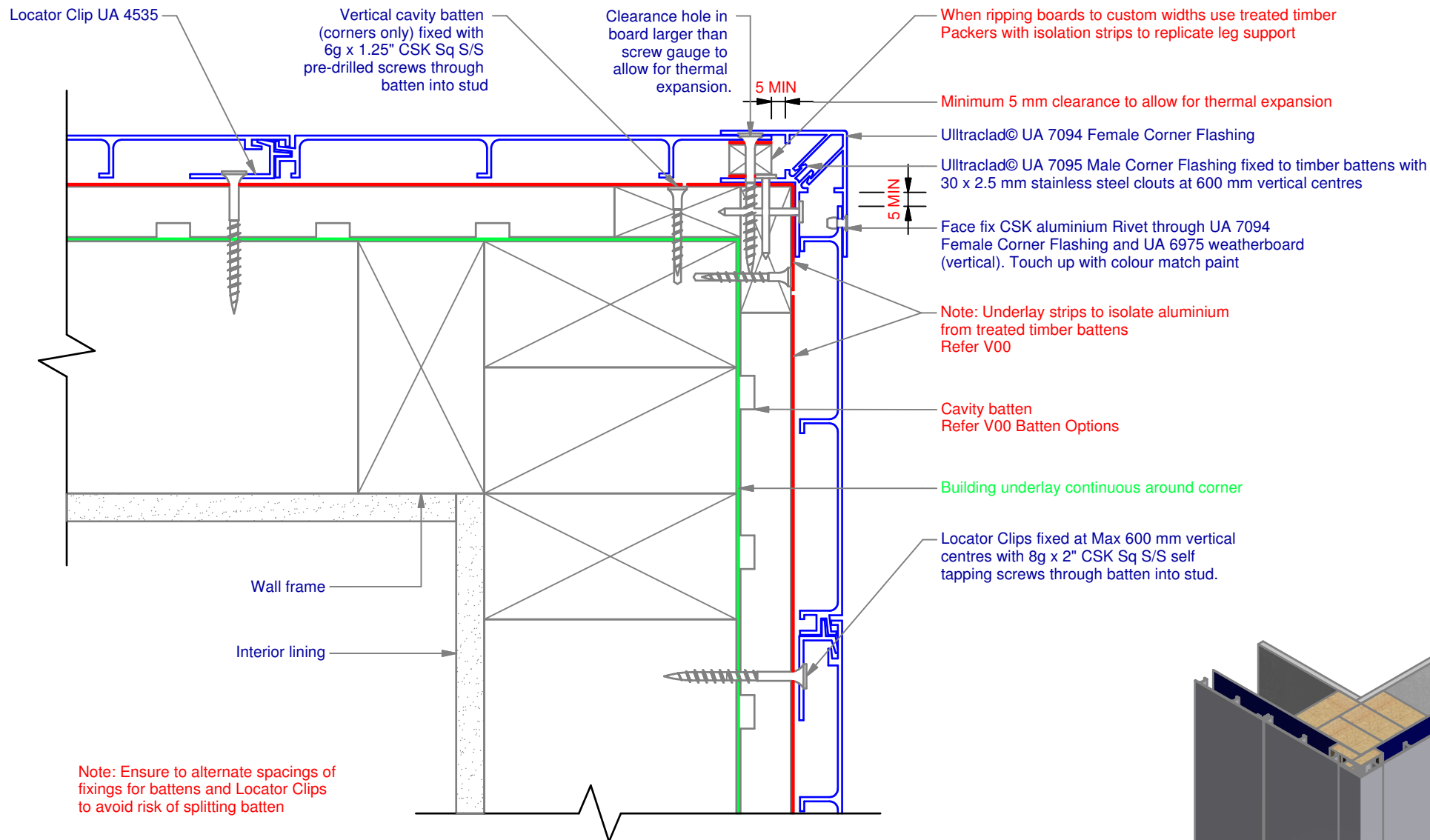
Rev : 08

Wall Batten Elevation
UA 7401 INFINITY BOARD

VERTICAL CAVITY SYSTEM

Scale: 1 : 20 @ A4 - 2017

Branz Appraisal #796 2013. (Vertical)



ULLTRACLAD®
ALUMINIUM WEATHERBOARDS

ULLRICH ALUMINIUM CO LTD
PO Box 98 843 Manukau City Auckland 2241
118 Wiri Station Road Wiri 2104 New Zealand
TL 09 262 6262 Ext. 814 Mob 021 541 563

www.ulltraclad.co.nz

© ULLRICH ALUMINIUM - All Rights Reserved

V01

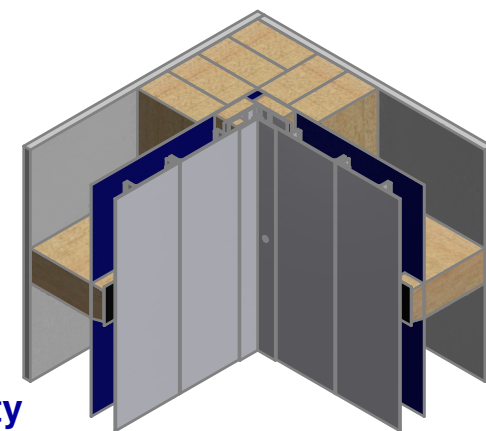
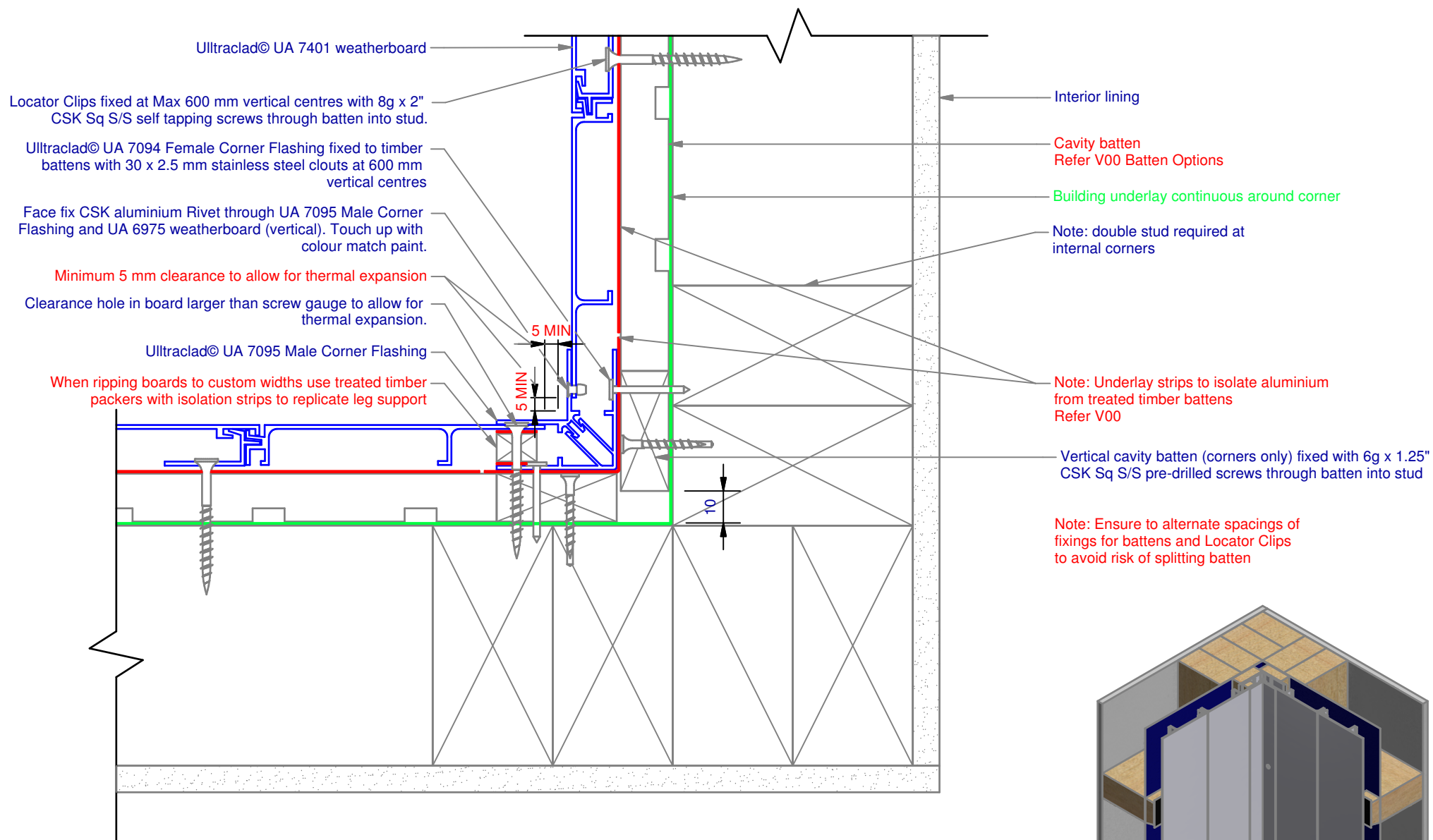
Rev : 08

External Corner on Cavity
UA 7401 INFINITY BOARD

VERTICAL CAVITY SYSTEM

Scale: 1 : 2 @ A4 - 2017

Branz Appraisal #796 2013. (Vertical)



ULLTRACLAD®
ALUMINIUM WEATHERBOARDS

ULLRICH ALUMINIUM CO LTD
PO Box 98 843 Manukau City Auckland 2241
118 Wiri Station Road Wiri 2104 New Zealand
TL 09 262 6262 Ext. 814 Mob 021 541 563
www.ulltraclad.co.nz
© ULLRICH ALUMINIUM - All Rights Reserved

V02

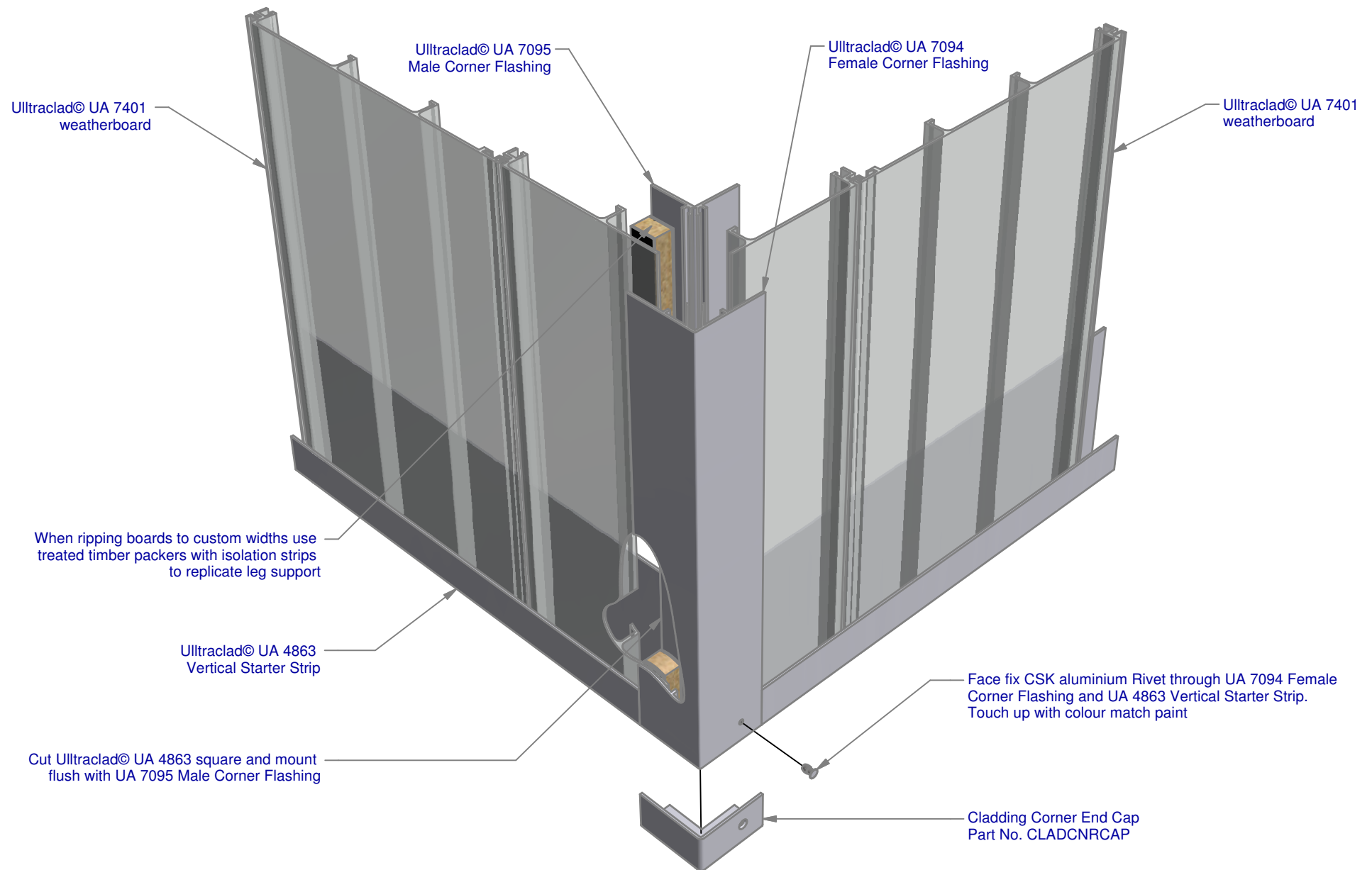
Rev : 08

Internal Corner on Cavity
UA 7401 INFINITY BOARD

VERTICAL CAVITY SYSTEM

Scale: 1 : 2 @ A4 - 2017

Branz Appraisal #796 2013. (Vertical)



ULLTRACLAD®
ALUMINIUM WEATHERBOARDS

ULLRICH ALUMINIUM CO LTD
PO Box 98 843 Manukau City Auckland 2241
118 Wiri Station Road Wiri 2104 New Zealand
TL 09 262 6262 Ext. 814 Mob 021 541 563
www.ulltraclad.co.nz
© ULLRICH ALUMINIUM - All Rights Reserved

V03

Rev : 08

90° deg Corner Cap
UA 7401 INFINITY BOARD

VERTICAL CAVITY SYSTEM
Scale: 1 : 3 @ A4 - 2017

Brnz Appraisal #796 2013. (Vertical)

Ultracalad® UA 7401 weatherboards fixed with Locator Clips fixed at Max 600 mm vertical centres with 8g x 2" CSK Sq S/S self tapping screws through batten into stud.

Cavity batten
Refer V00 Batten Options

Note: Underlay strips to isolate aluminium from treated timber battens
Refer V00

Ultracalad® UA 4863 Vertical Starter Strip fixed to bottom plate at 300 mm centres with 8g x 2" CSK Sq S/S self tapping screws

Ultracalad® Cavity Vent Strip
Alternatively use PVC type

Ultracalad® UA 4863 with 5 mm diameter drainage holes drilled through base of Starter at 300 mm centres

Note: 100 mm minimum to permanent paving or 175 mm to unpaved ground to clause 9.1.3 of E2/AS1

Concrete slab or Blockwork

Finished ground level

Building underlay

Interior lining

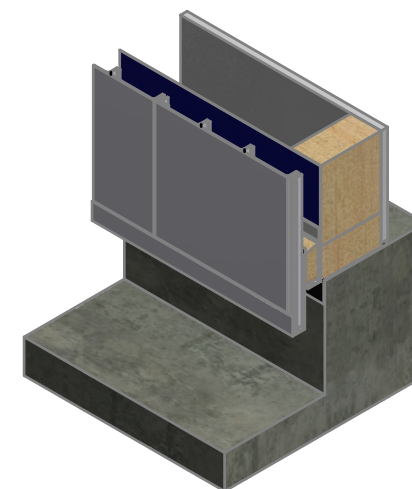
Bottom plate over DPC

Note: Ensure to alternate spacings of fixings for battens and Locator Clips to avoid risk of splitting batten

6 mm overhang (optional)

50

100



ULLTRACLAD®
ALUMINIUM WEATHERBOARDS

ULLRICH ALUMINIUM CO LTD
PO Box 98 843 Manukau City Auckland 2241
118 Wiri Station Road Wiri 2104 New Zealand
TL 09 262 6262 Ext. 814 Mob 021 541 563

www.ulltracalad.co.nz

© ULLRICH ALUMINIUM - All Rights Reserved

V04

Rev : 08

Vertical Wall Starter
UA 7401 INFINITY BOARD

VERTICAL CAVITY SYSTEM

Scale: 1 : 2 @ A4 - 2017

Brnz Appraisal #796 2013. (Vertical)

Note: Ensure to alternate spacings of fixings for battens and Locator Clips to avoid risk of splitting batten

Sealant over PEF Backing Rod

Screw through UA 7584 base at Max 600 mm horizontal centres with 8g x 2" CSK Sq. S/S self tapping screws through batten into stud

Ultracalad® UA 5833 Soffit Clip Top

Minimum 5 mm clearance to allow for thermal expansion

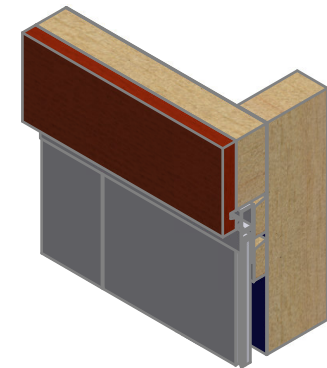
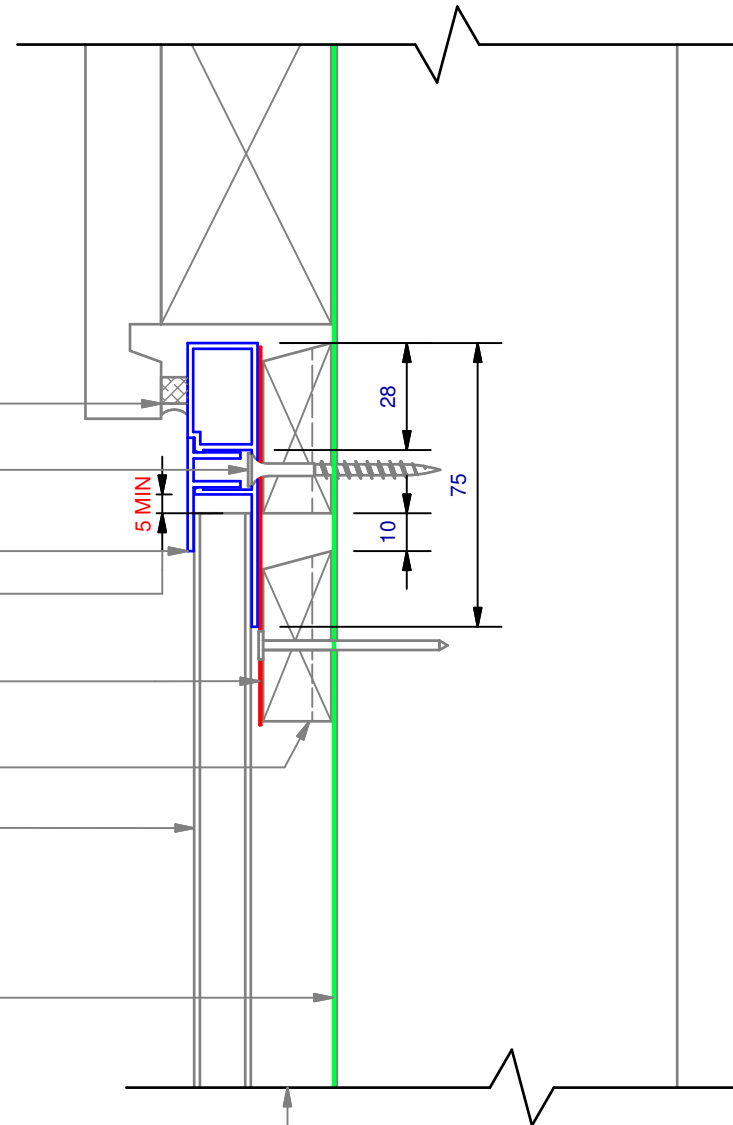
Note: Underlay strips to isolate aluminium from treated timber battens Refer V00

Cavity batten Refer V00 Batten Options

Ultracalad® UA 7401 weatherboards fixed with Locator Clips fixed at Max 600 mm vertical centres with 8g x 2" CSK Sq S/S self tapping screws through batten into stud.

Building underlay

Drained and vented cavity as per NZBC clause E2/AS1 (section 9.1.8)



ULLTRACLAD®
ALUMINIUM WEATHERBOARDS

ULLRICH ALUMINIUM CO LTD
PO Box 98 843 Manukau City Auckland 2241
118 Wiri Station Road Wiri 2104 New Zealand
TL 09 262 6262 Ext. 814 Mob 021 541 563
www.ulltracalad.co.nz
© ULLRICH ALUMINIUM - All Rights Reserved

V05

Rev : 08

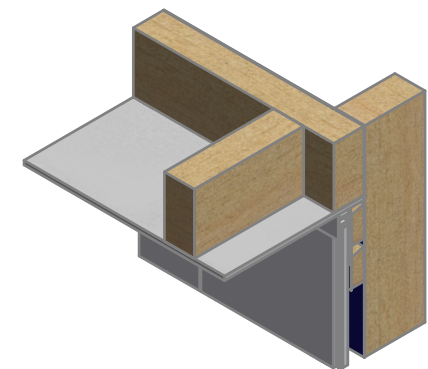
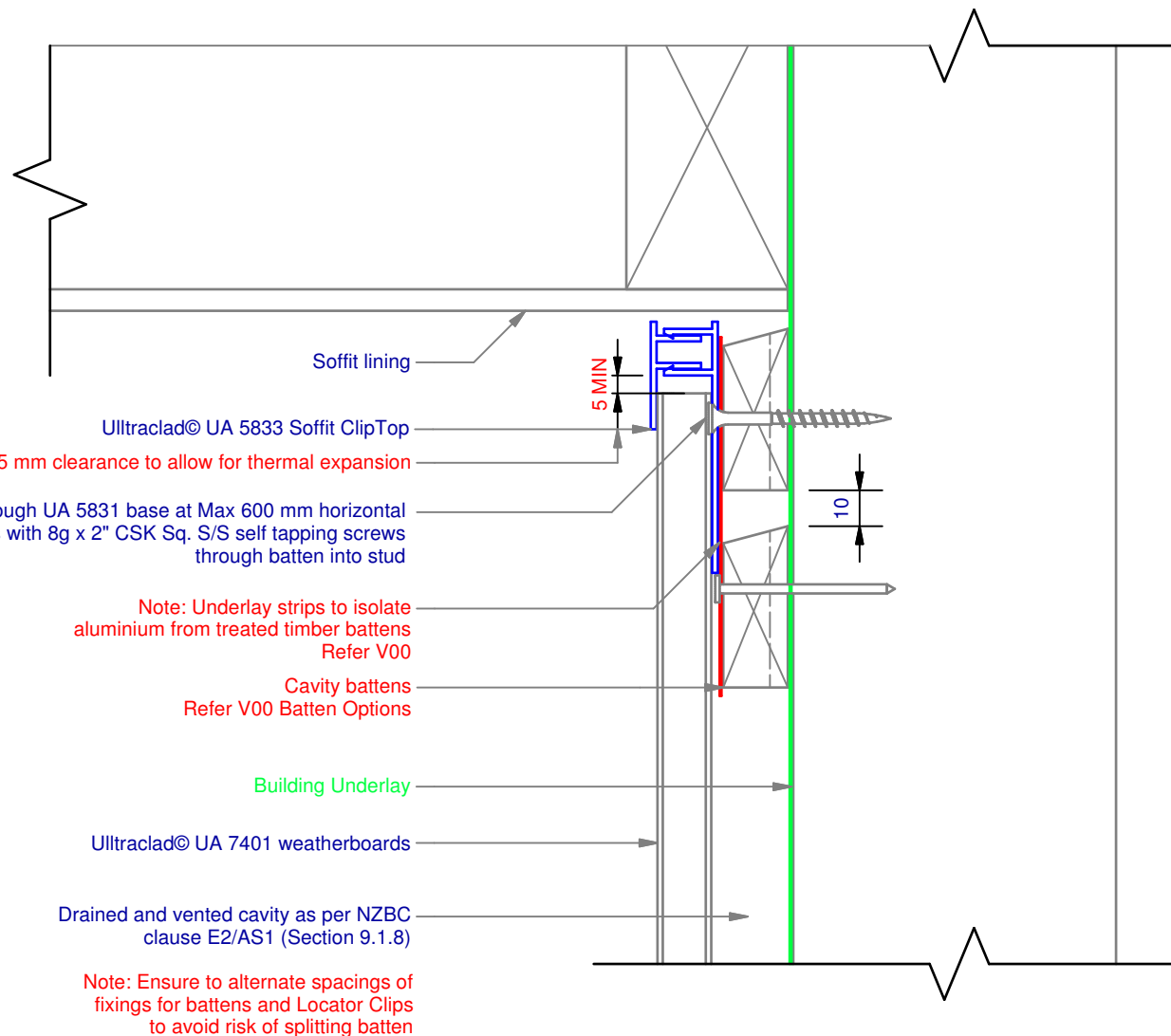
No Soffit Detail on Cavity

UA 7401 INFINITY BOARD

VERTICAL CAVITY SYSTEM

Scale: 1 : 2 @ A4 - 2017

Branz Appraisal #796 2013. (Vertical)



ULLTRACLAD®
ALUMINIUM WEATHERBOARDS

ULLRICH ALUMINIUM CO LTD
PO Box 98 843 Manukau City Auckland 2241
118 Wiri Station Road Wiri 2104 New Zealand
TL 09 262 6262 Ext. 814 Mob 021 541 563
www.ulltraclad.co.nz
© ULLRICH ALUMINIUM - All Rights Reserved

V06

Rev : 08

Soffit Detail on Cavity
UA 7401 INFINITY BOARD

VERTICAL CAVITY SYSTEM
Scale: 1 : 2 @ A4 - 2017

Branz Appraisal #796 2013. (Vertical)

Ultracalad® UA 7401 weatherboards fixed with Locator Clips fixed at Max 600 mm vertical centres with 8g x 2" CSK Sq S/S self tapping screws through batten into stud.

Interior lining

Bottom plate

Flooring to finish 10 mm back from outside framing

Timber floor structure in accordance with NZS3604: 2011

Building Underlay

Cavity batten
Refer V00 Batten Options

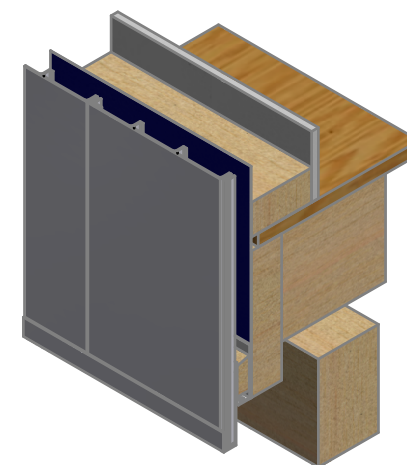
Ultracalad® UA 4863 Vertical Starter Strip fixed to bottom plate at 300 mm centres with 8g x 2" CSK Sq. S/S self tapping screws

Note: Underlay strips to isolate aluminium from treated timber battens
Refer V00

Ultracalad® Cavity Vent Strip
Alternatively use PVC type

Ultracalad® UA 4863 with 5 mm diameter drainage holes drilled through base of Starter at 300 mm centres

Note: Ensure to alternate spacings of fixings for battens and Locator Clips to avoid risk of splitting batten



ULLTRACLAD®
ALUMINIUM WEATHERBOARDS

ULLRICH ALUMINIUM CO LTD
PO Box 98 843 Manukau City Auckland 2241
118 Wiri Station Road Wiri 2104 New Zealand
TL 09 262 6262 Ext. 814 Mob 021 541 563

www.ulltracalad.co.nz

© ULLRICH ALUMINIUM - All Rights Reserved

V07

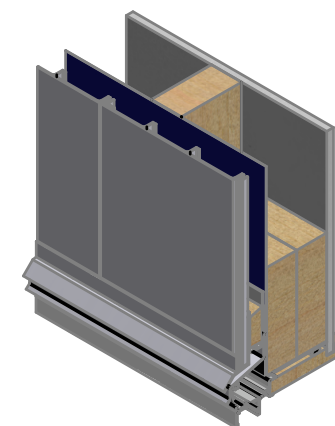
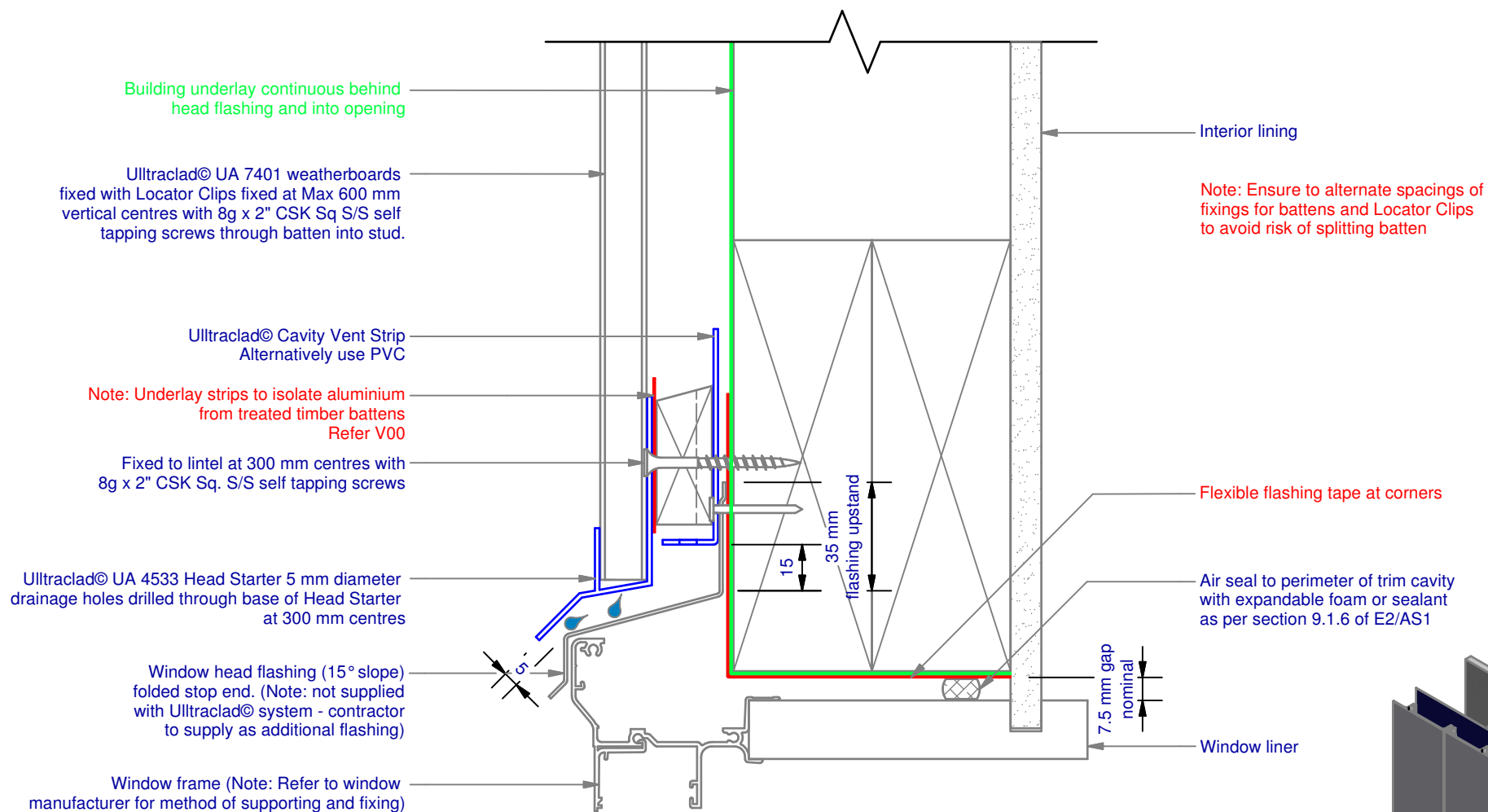
Rev : 08

Timber Floor on Cavity
UA 7401 INFINITY BOARD

VERTICAL CAVITY SYSTEM

Scale: 1 : 3 @ A4 - 2017

Branz Appraisal #796 2013. (Vertical)



ULLTRACLAD®
ALUMINIUM WEATHERBOARDS

ULLRICH ALUMINIUM CO LTD
PO Box 98 843 Manukau City Auckland 2241
118 Wiri Station Road Wiri 2104 New Zealand
TL 09 262 6262 Ext. 814 Mob 021 541 563
www.ulltraclad.co.nz
© ULLRICH ALUMINIUM - All Rights Reserved

V08

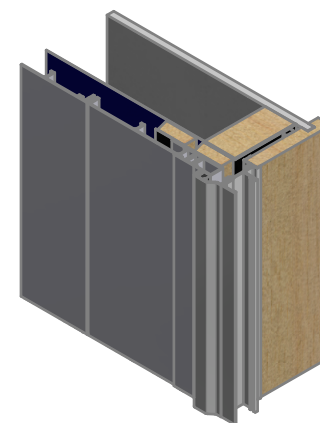
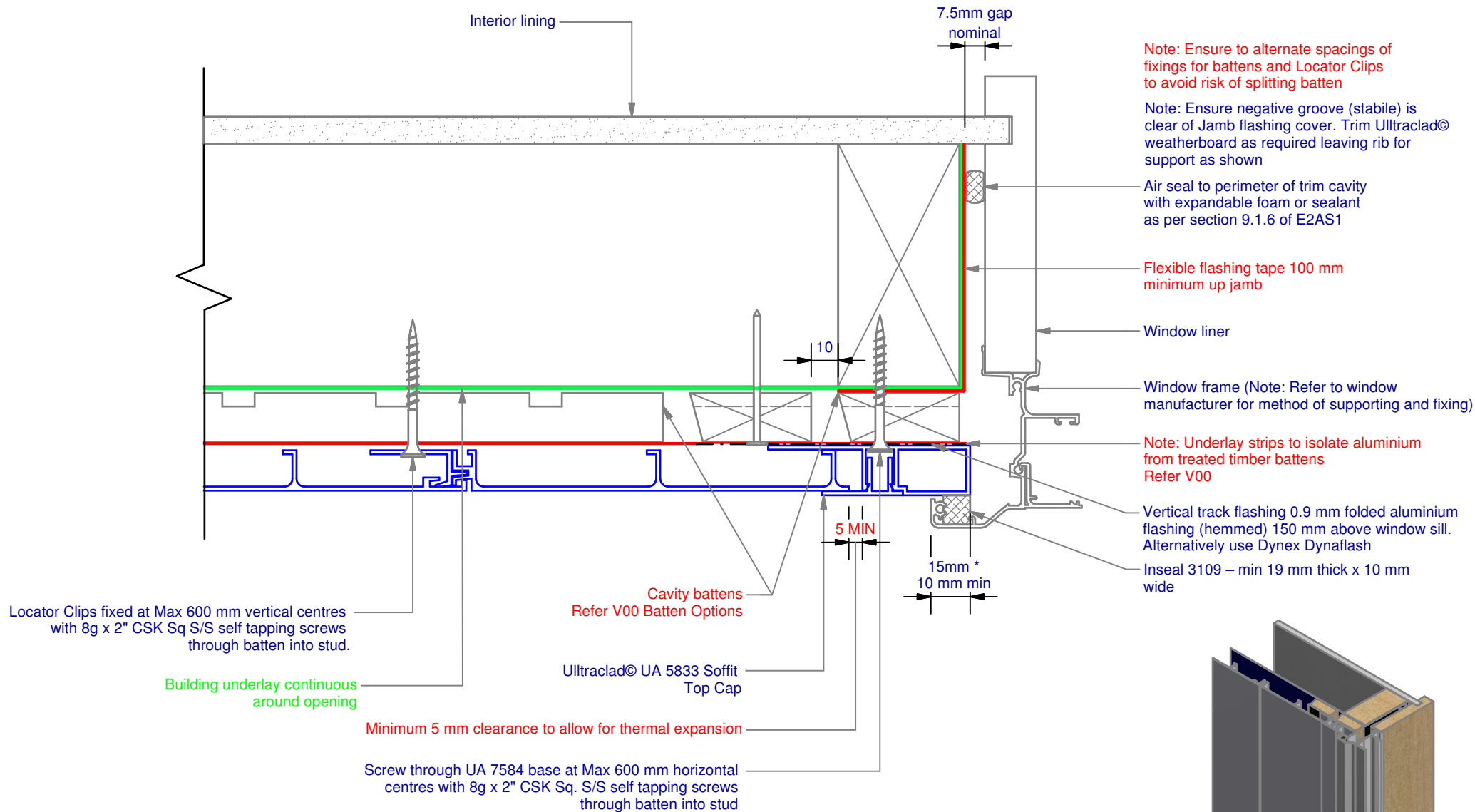
Rev : 08

Window Head on Cavity
UA 7401 INFINITY BOARD

VERTICAL CAVITY SYSTEM

Scale: 1 : 2 @ A4 - 2017

Branz Appraisal #796 2013. (Vertical)



ULLTRACLAD®
ALUMINIUM WEATHERBOARDS

ULLRICH ALUMINIUM CO LTD
PO Box 98 843 Manukau City Auckland 2241
118 Wiri Station Road Wiri 2104 New Zealand
TL 09 262 6262 Ext. 814 Mob 021 541 563

www.ulltracalad.co.nz

© ULLRICH ALUMINIUM - All Rights Reserved

V09

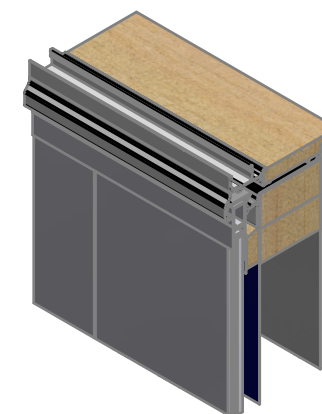
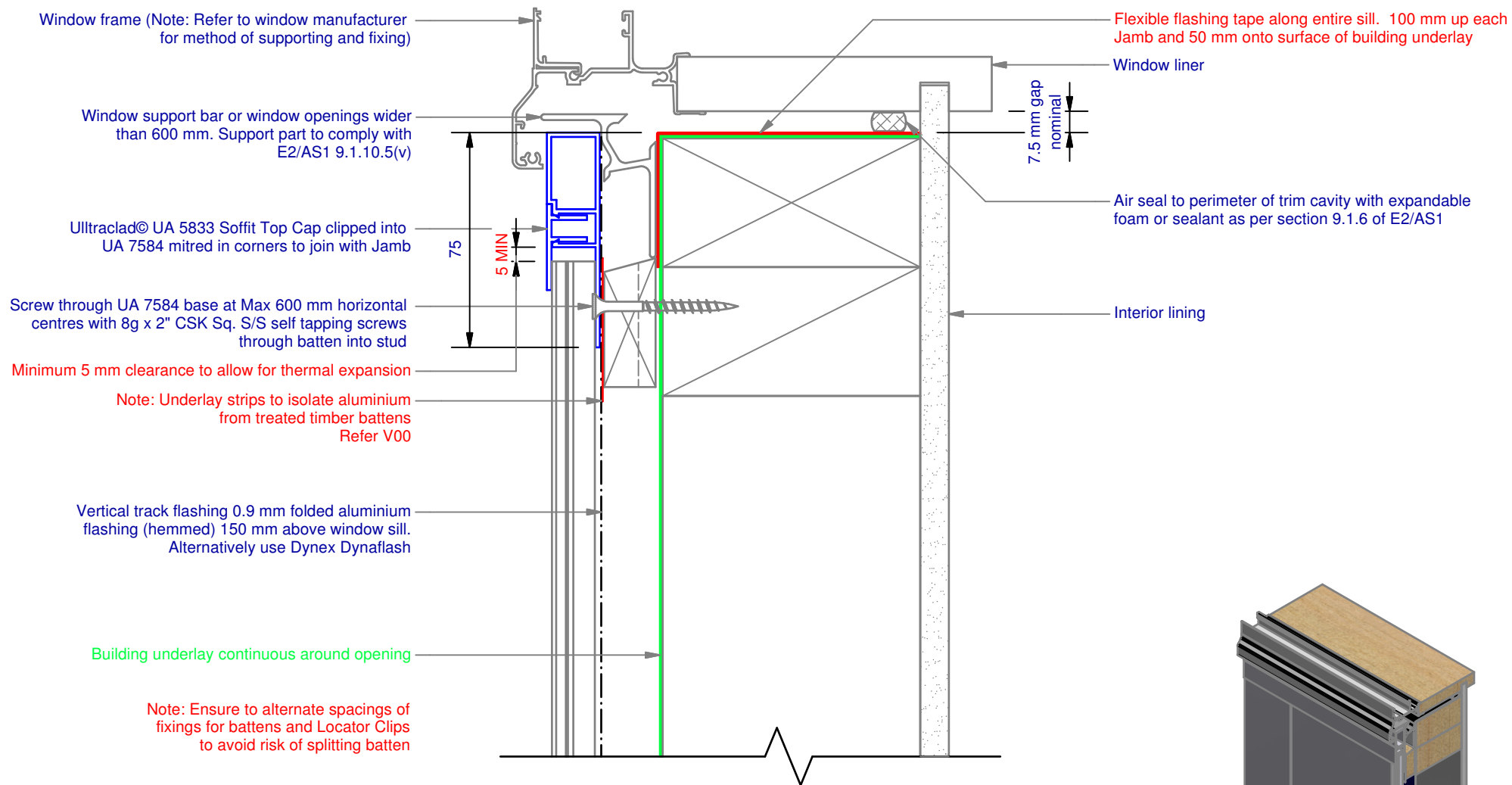
Rev : 08

Window Jamb on Cavity
UA 7401 INFINITY BOARD

VERTICAL CAVITY SYSTEM

Scale: 1 : 2 @ A4 - 2017

Brnz Appraisal #796 2013. (Vertical)



ULLTRACLAD®
ALUMINIUM WEATHERBOARDS

ULLRICH ALUMINIUM CO LTD
PO Box 98 843 Manukau City Auckland 2241
118 Wiri Station Road Wiri 2104 New Zealand
TL 09 262 6262 Ext. 814 Mob 021 541 563
www.ulltracalad.co.nz
© ULLRICH ALUMINIUM - All Rights Reserved

V10

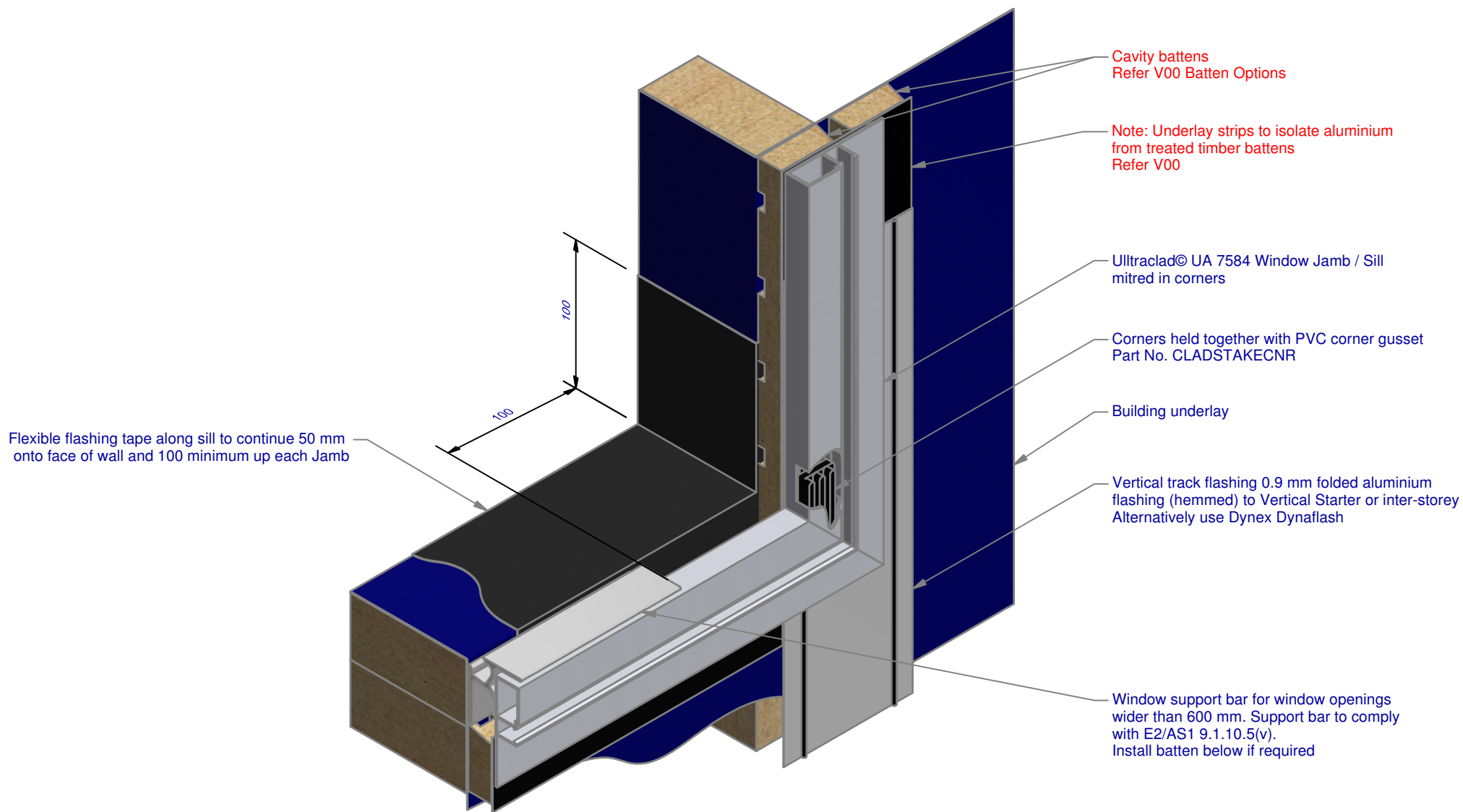
Rev : 08

Window Sill on Cavity
UA 7401 INFINITY BOARD

VERTICAL CAVITY SYSTEM

Scale: 1 : 2 @ A4 - 2017

Brnz Appraisal #796 2013. (Vertical)



ULLTRACLAD®
ALUMINIUM WEATHERBOARDS

ULLRICH ALUMINIUM CO LTD
PO Box 98 843 Manukau City Auckland 2241
118 Wiri Station Road Wiri 2104 New Zealand
TL 09 262 6262 Ext. 814 Mob 021 541 563
www.ulltracalad.co.nz
© ULLRICH ALUMINIUM - All Rights Reserved

V11

Rev : 08

Sill-Jamb on Cavity
UA 7401 INFINITY BOARD

VERTICAL CAVITY SYSTEM
Scale: 1 : 3 @ A4 - 2017

Branz Appraisal #796 2013. (Vertical)

Ultracalad® Cavity Vent Strip
Alternatively use PVC

Ultracalad® UA 4533
Head Starter

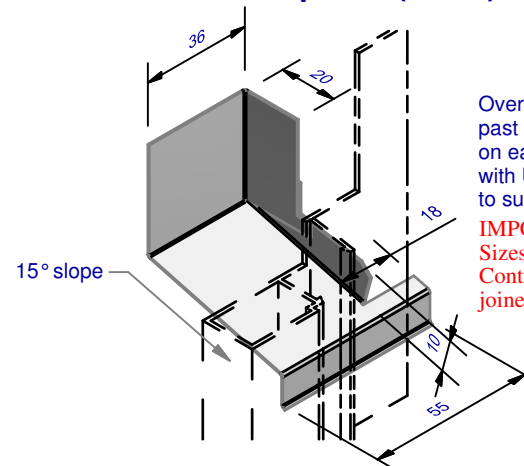
Ultracalad® UA 5833
Soffit Clip Top

Ultracalad® UA 7584
Jamb Flashing

Window Head Flashing (15° slope)
folded stop end. (Note: not supplied
with Ultracalad® system - contractor
to supply as additional flashing)

Ultracalad® UA 4533 Head Starter 5 mm diameter drainage
holes drilled through base of Head Starter at 300 mm centres

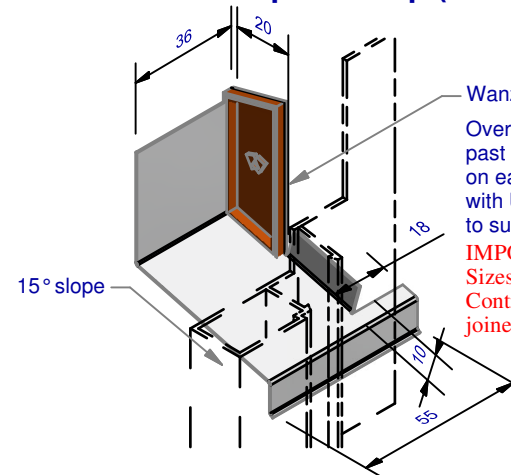
Window Head Flashing Option 1 Cut & Fold Stop End (1 : 2)



Overall Head Flashing length = +40 mm
past edge of window and door joinery
on each side. (Note: not supplied
with Ultracalad® system - contractor
to supply as additional flashing)

IMPORTANT:
Sizes shown are indicative only!
Contractor to confirm onsite as
joinery suites may vary.

Window Head Flashing Option 2 Wanz Plastic Stop End Cap (1 : 2)



Wanz Plastic Stop End

Overall Head Flashing length = +40 mm
past edge of window and door joinery
on each side. (Note: not supplied
with Ultracalad® system - contractor
to supply as additional flashing)

IMPORTANT:
Sizes shown are indicative only!
Contractor to confirm onsite as
joinery suites may vary.

ULLTRACLAD®
ALUMINIUM WEATHERBOARDS

ULLRICH ALUMINIUM CO LTD
PO Box 98 843 Manukau City Auckland 2241
118 Wiri Station Road Wiri 2104 New Zealand
TL 09 262 6262 Ext. 814 Mob 021 541 563

www.ulltracalad.co.nz

© ULLRICH ALUMINIUM - All Rights Reserved

V12

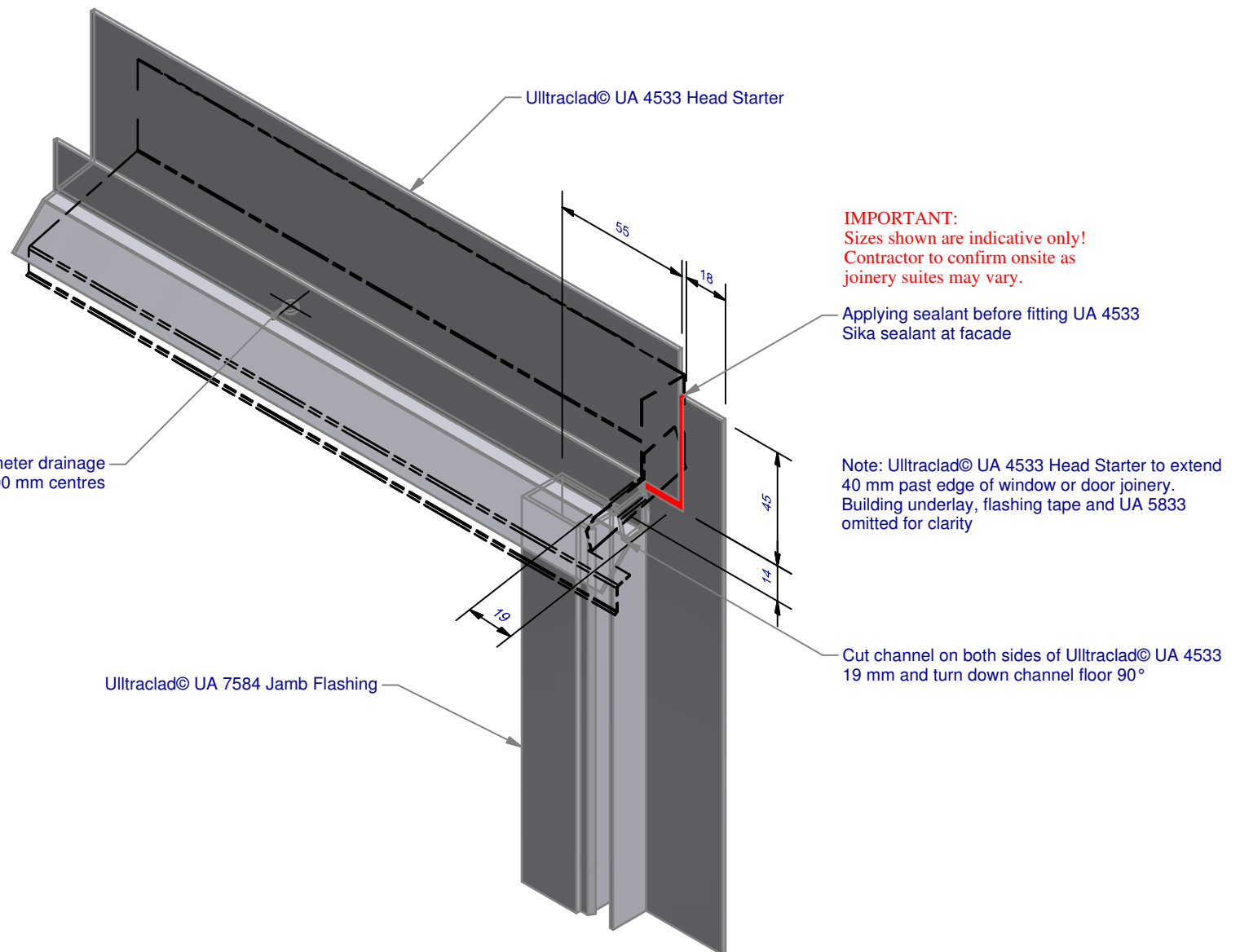
Rev : 08

Head flashing / Head Starter / Jamb iso
UA 7401 INFINITY BOARD

VERTICAL CAVITY SYSTEM

Scale: 1 : 3 @ A4 - 2017

Brnz Appraisal #796 2013. (Vertical)



ULLTRACLAD®
ALUMINIUM WEATHERBOARDS

ULLRICH ALUMINIUM CO LTD
PO Box 98 843 Manukau City Auckland 2241
118 Wiri Station Road Wiri 2104 New Zealand
TL 09 262 6262 Ext. 814 Mob 021 541 563
www.ulltraclad.co.nz
© ULLRICH ALUMINIUM - All Rights Reserved

V13

Rev : 08

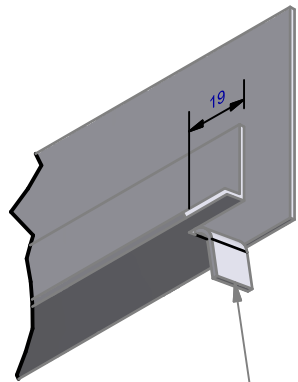
Head - Jamb iso
UA 7401 INFINITY BOARD
VERTICAL CAVITY SYSTEM
Scale: 1 : 2 @ A4 - 2017

Branz Appraisal #796 2013. (Vertical)

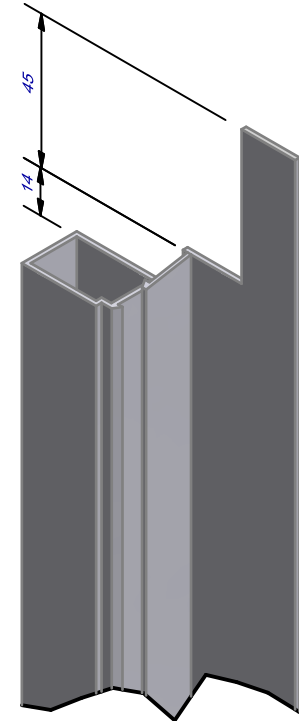
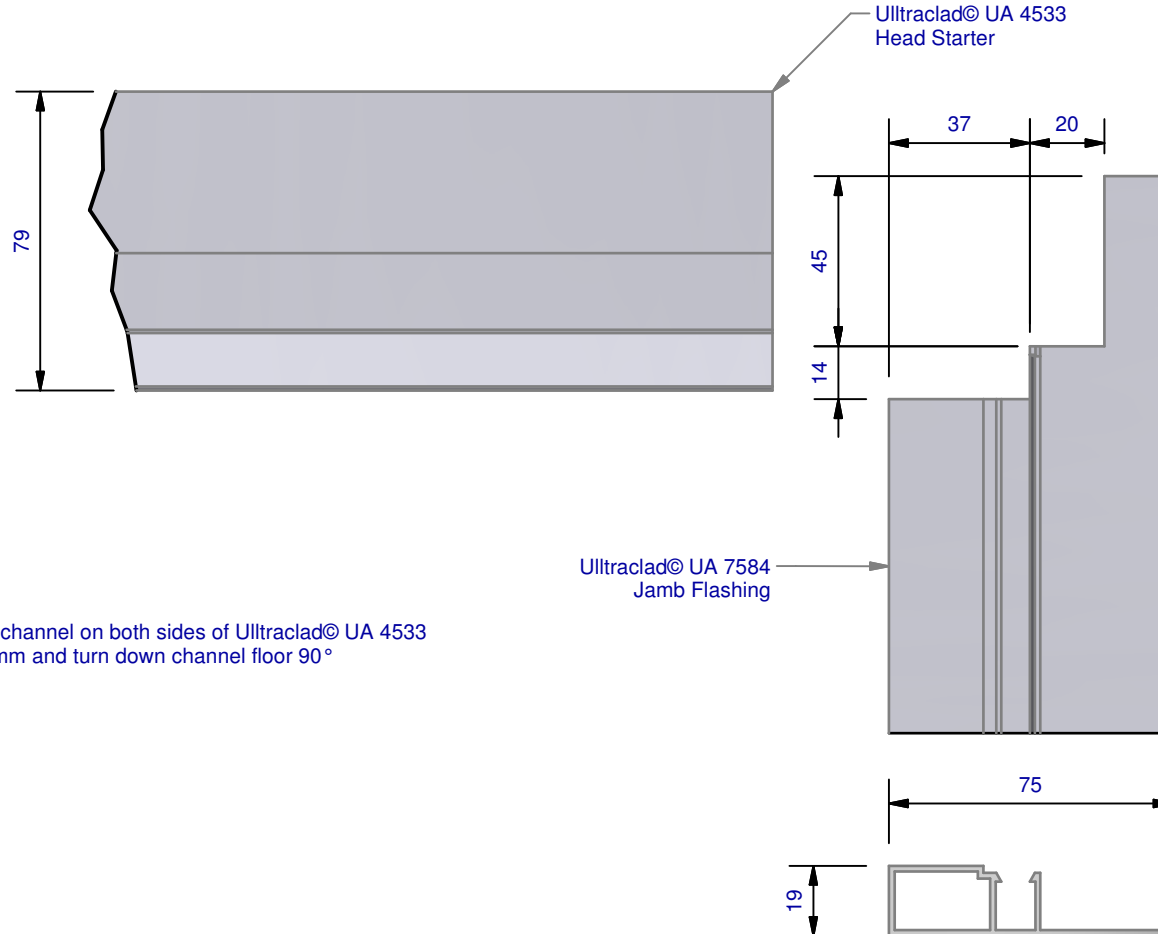
Ultracalad® UA 4533 Head Starter 5 mm diameter
drainage holes drilled through base of Head
Starter at 300 mm centres



IMPORTANT:
Sizes shown are indicative only!
Contractor to confirm onsite as
joinery suites may vary.



Cut channel on both sides of Ultracalad® UA 4533
19 mm and turn down channel floor 90°



ULLTRACLAD®
ALUMINIUM WEATHERBOARDS

ULLRICH ALUMINIUM CO LTD
PO Box 98 843 Manukau City Auckland 2241
118 Wiri Station Road Wiri 2104 New Zealand
TL 09 262 6262 Ext. 814 Mob 021 541 563
www.ulltracalad.co.nz
© ULLRICH ALUMINIUM - All Rights Reserved

V14

Rev : 08

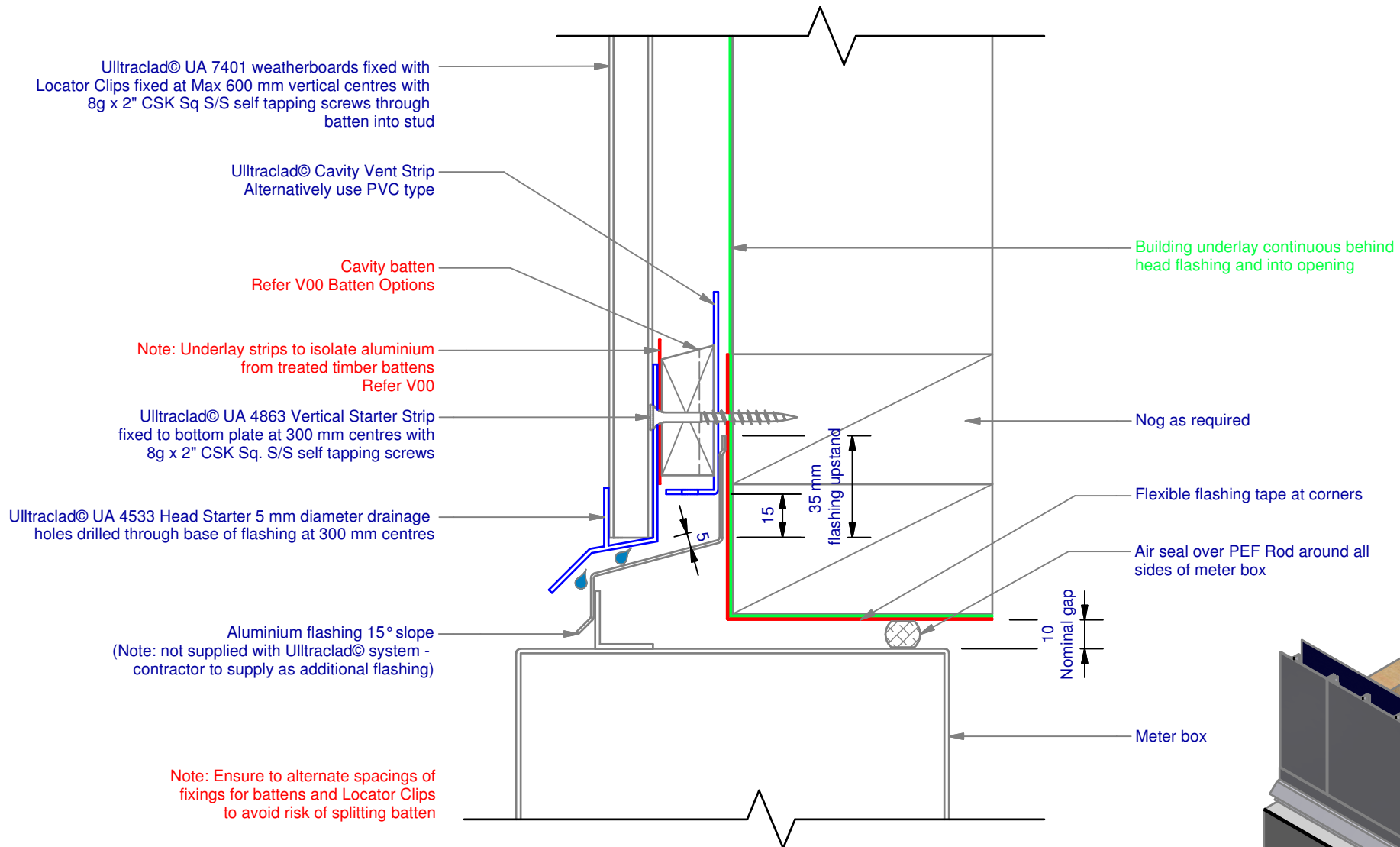
Head - Jamb Notching Details

UA 7401 INFINITY BOARD

VERTICAL CAVITY SYSTEM

Scale: 1 : 2 @ A4 - 2017

Branz Appraisal #796 2013. (Vertical)



ULLTRACLAD®
ALUMINIUM WEATHERBOARDS

ULLRICH ALUMINIUM CO LTD
PO Box 98 843 Manukau City Auckland 2241
118 Wiri Station Road Wiri 2104 New Zealand
TL 09 262 6262 Ext. 814 Mob 021 541 563
www.ulltraclad.co.nz
© ULLRICH ALUMINIUM - All Rights Reserved

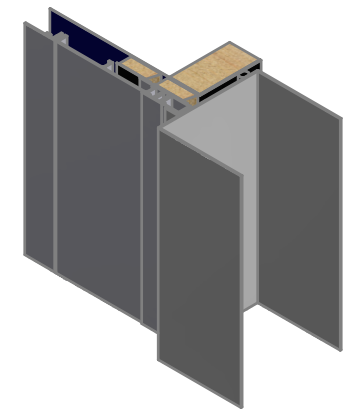
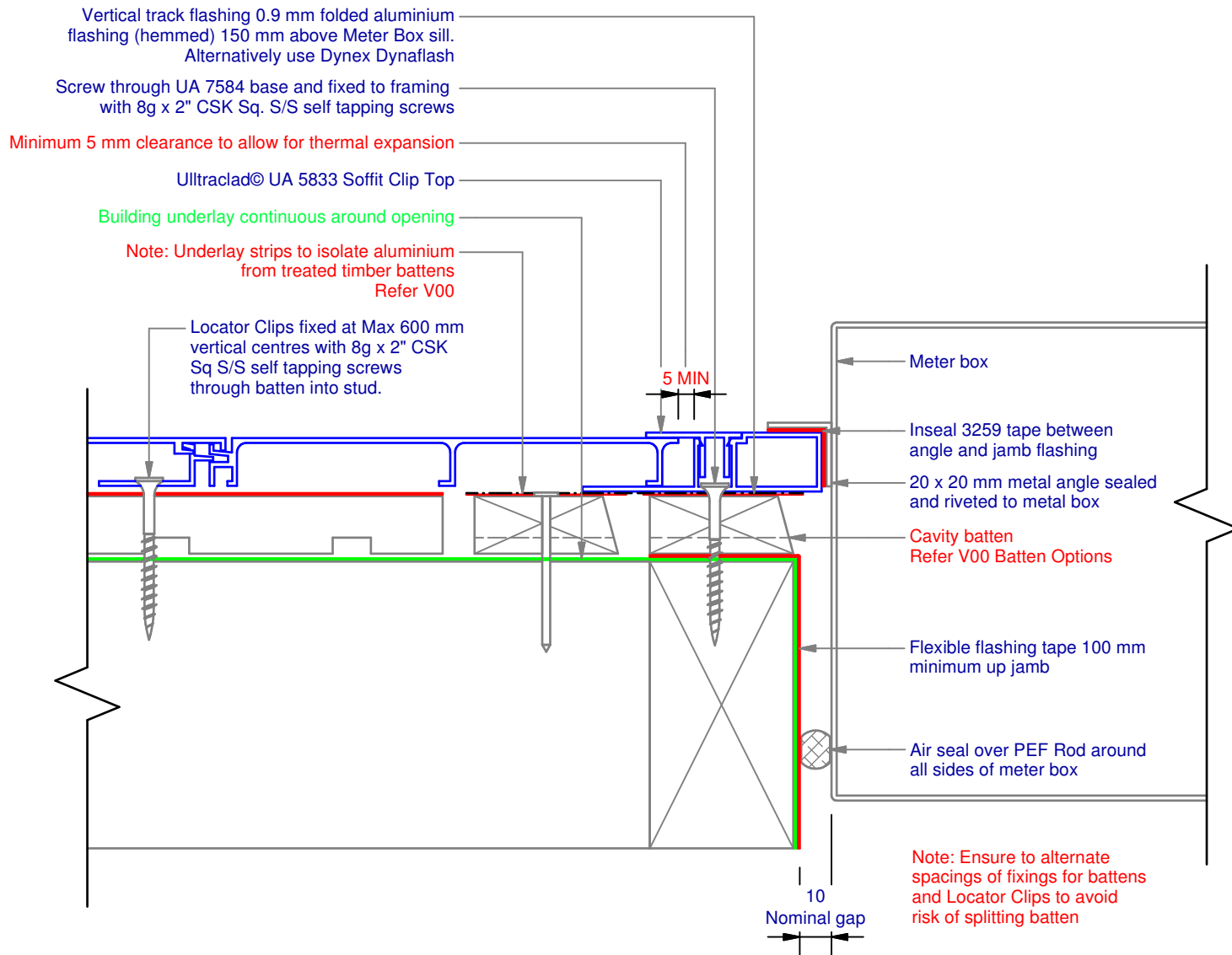
V15

Rev : 08

Meter Box Head on Cavity
UA 7401 INFINITY BOARD

VERTICAL CAVITY SYSTEM
Scale: 1 : 2 @ A4 - 2017

Brnz Appraisal #796 2013. (Vertical)



ULLTRACLAD®
ALUMINIUM WEATHERBOARDS

ULLRICH ALUMINIUM CO LTD
PO Box 98 843 Manukau City Auckland 2241
118 Wiri Station Road Wiri 2104 New Zealand
TL 09 262 6262 Ext. 814 Mob 021 541 563
www.ulltracalad.co.nz
© ULLRICH ALUMINIUM - All Rights Reserved

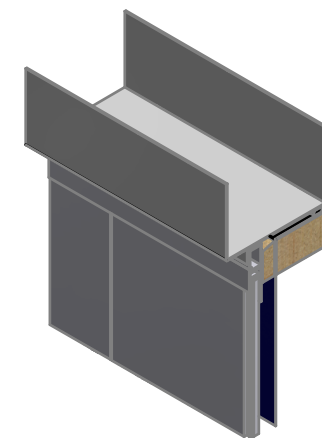
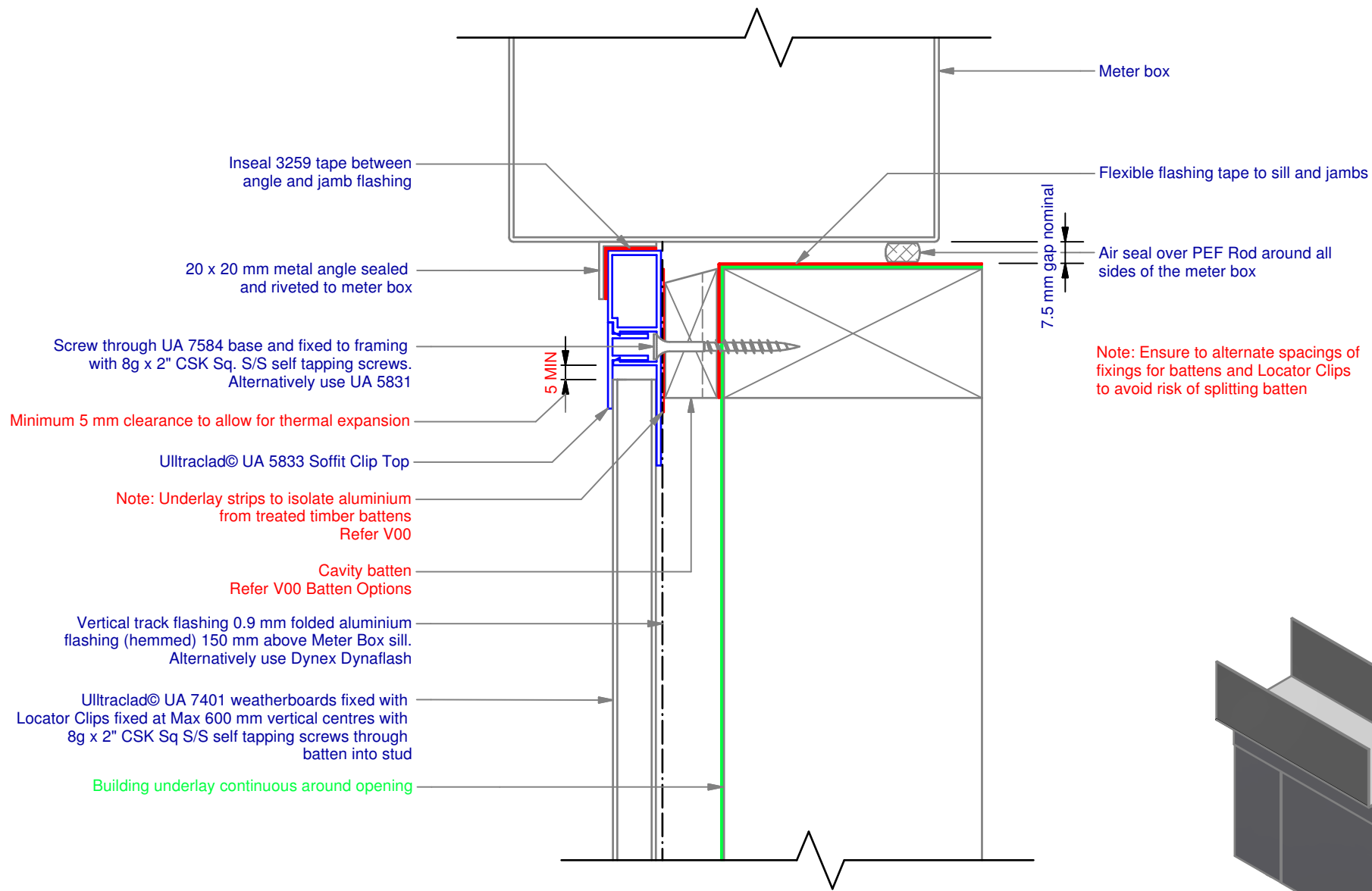
V16

Rev : 08

Meter Box Jamb on Cavity
UA 7401 INFINITY BOARD

VERTICAL CAVITY SYSTEM
Scale: 1 : 2 @ A4 - 2017

Brnz Appraisal #796 2013. (Vertical)



ULLTRACLAD®
ALUMINIUM WEATHERBOARDS

ULLRICH ALUMINIUM CO LTD
PO Box 98 843 Manukau City Auckland 2241
118 Wiri Station Road Wiri 2104 New Zealand
TL 09 262 6262 Ext. 814 Mob 021 541 563

www.ulltraclad.co.nz

© ULLRICH ALUMINIUM - All Rights Reserved

V17

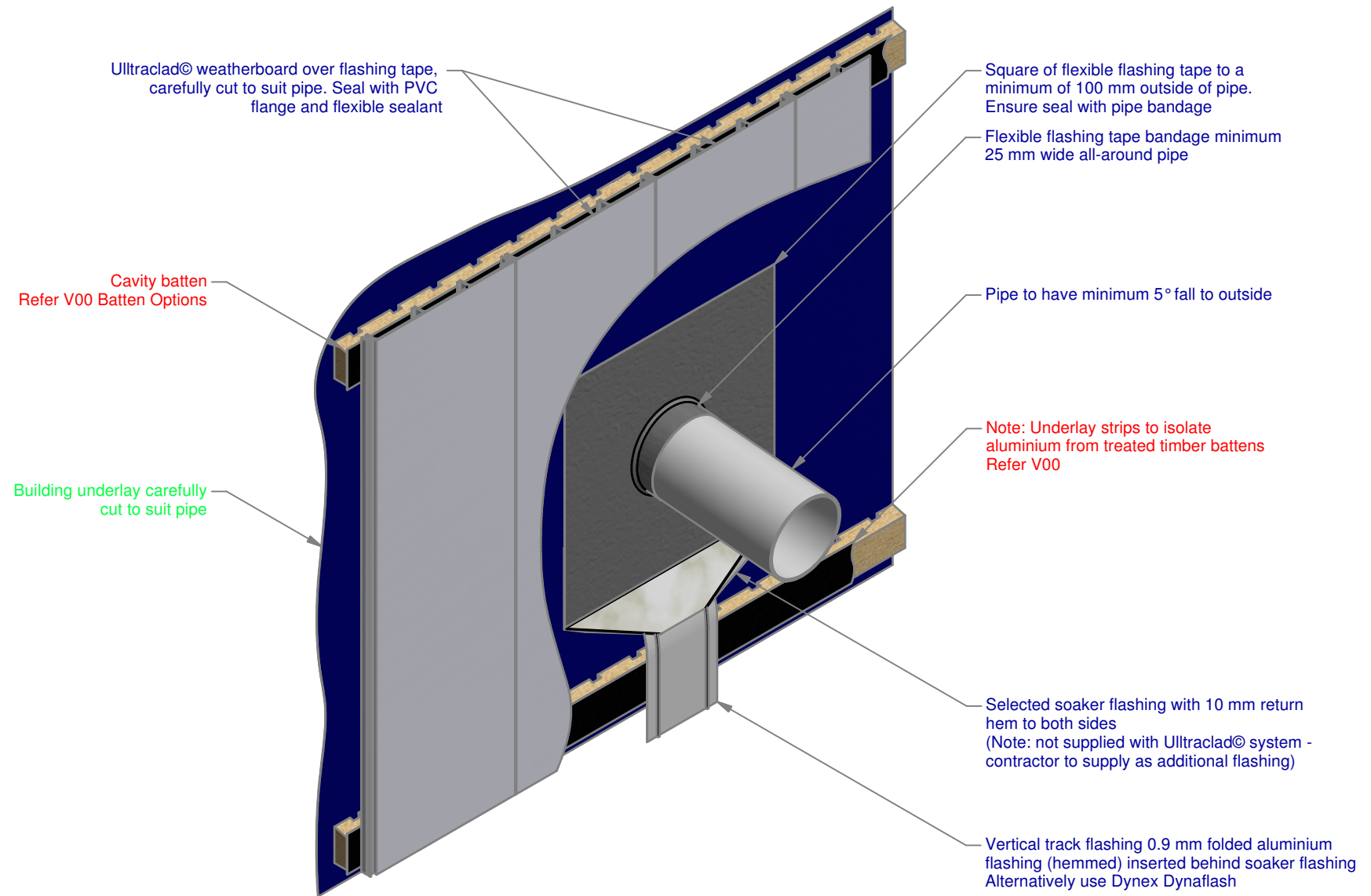
Rev : 08

Meter Box Sill on Cavity
UA 7401 INFINITY BOARD

VERTICAL CAVITY SYSTEM

Scale: 1 : 2 @ A4 - 2017

Branz Appraisal #796 2013. (Vertical)



ULLTRACLAD®
ALUMINIUM WEATHERBOARDS

ULLRICH ALUMINIUM CO LTD
PO Box 98 843 Manukau City Auckland 2241
118 Wiri Station Road Wiri 2104 New Zealand
TL 09 262 6262 Ext. 814 Mob 021 541 563
www.ulltraclad.co.nz
© ULLRICH ALUMINIUM - All Rights Reserved

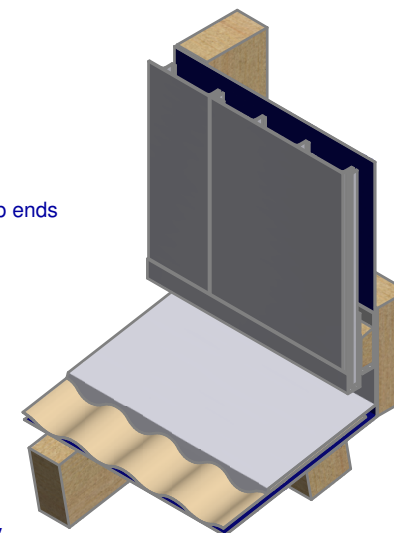
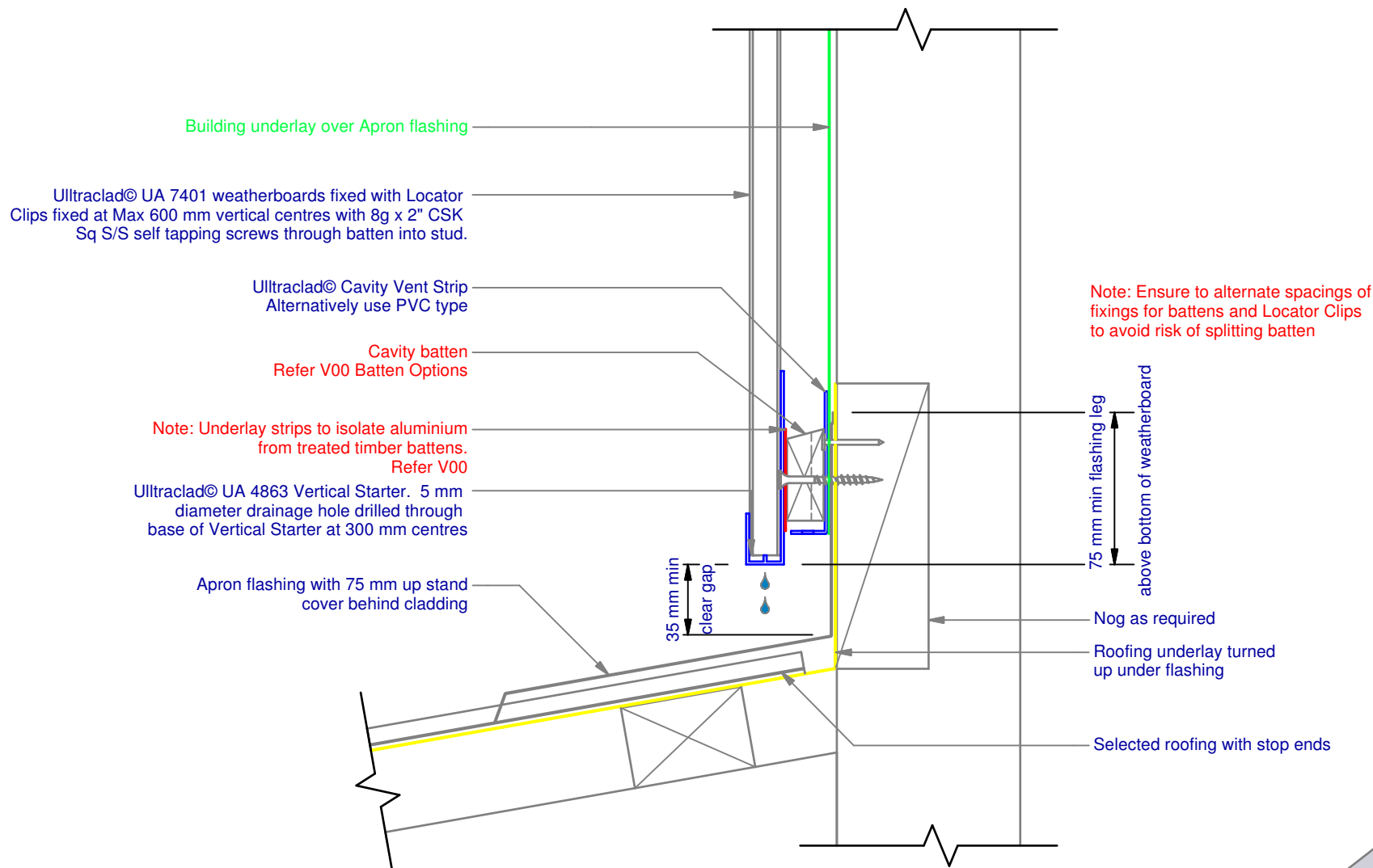
V18

Rev : 08

Pipe Penetration on cavity
UA 7401 INFINITY BOARD

VERTICAL CAVITY SYSTEM
Scale: 1 : 6 @ A4 - 2017

Branz Appraisal #796 2013. (Vertical)



ULLTRACLAD®
ALUMINIUM WEATHERBOARDS

ULLRICH ALUMINIUM CO LTD
PO Box 98 843 Manukau City Auckland 2241
118 Wiri Station Road Wiri 2104 New Zealand
TL 09 262 6262 Ext. 814 Mob 021 541 563
www.ulltracalad.co.nz
© ULLRICH ALUMINIUM - All Rights Reserved

V19

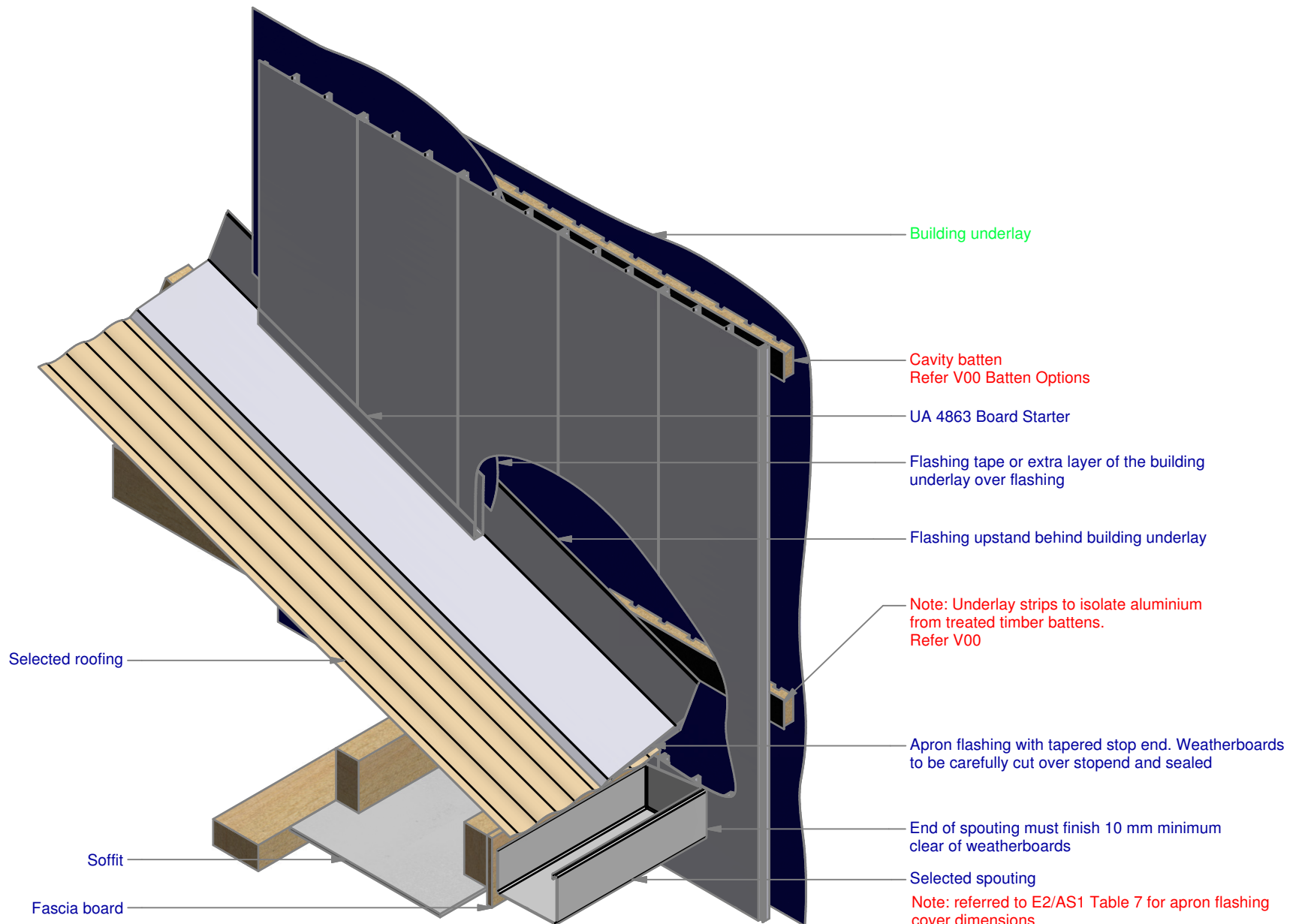
Rev : 08

Roof-Wall Junction on Cavity
UA 7401 INFINITY BOARD

VERTICAL CAVITY SYSTEM

Scale: 1 : 3 @ A4 - 2017

Branz Appraisal #796 2013. (Vertical)



ULLTRACLAD®
ALUMINIUM WEATHERBOARDS

ULLRICH ALUMINIUM CO LTD
PO Box 98 843 Manukau City Auckland 2241
118 Wiri Station Road Wiri 2104 New Zealand
TL 09 262 6262 Ext. 814 Mob 021 541 563
www.ulltracalad.co.nz
© ULLRICH ALUMINIUM - All Rights Reserved

V20

Rev : 08

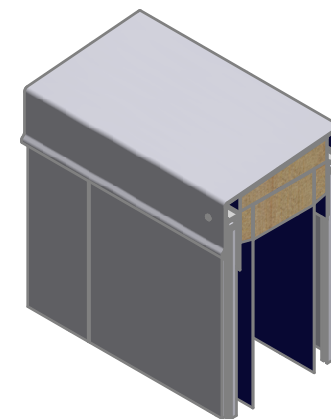
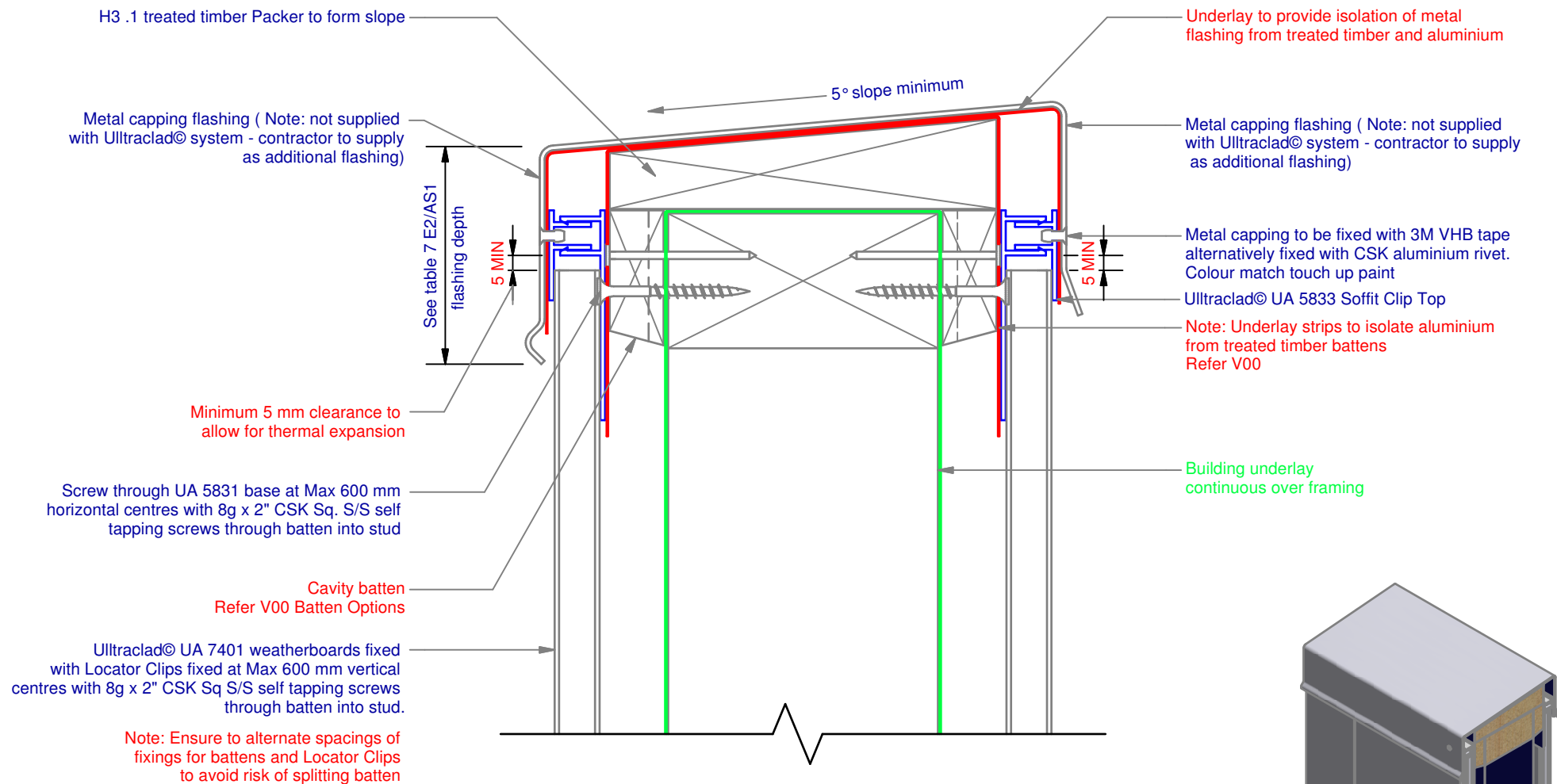
Gutter Wall Junction on Cavity

UA 7401 INFINITY BOARD

VERTICAL CAVITY SYSTEM

Scale: 1 : 8 @ A4 - 2017

Branz Appraisal #796 2013. (Vertical)



ULLTRACLAD®
ALUMINIUM WEATHERBOARDS

ULLRICH ALUMINIUM CO LTD
PO Box 98 843 Manukau City Auckland 2241
118 Wiri Station Road Wiri 2104 New Zealand
TL 09 262 6262 Ext. 814 Mob 021 541 563
www.ulltraclad.co.nz
© ULLRICH ALUMINIUM - All Rights Reserved

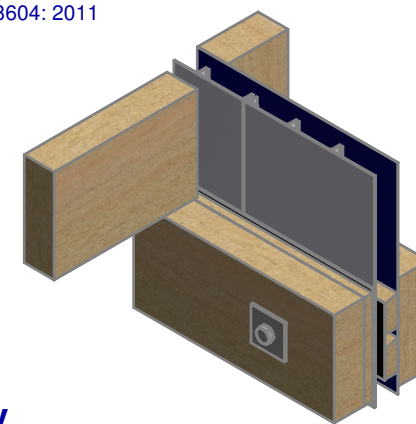
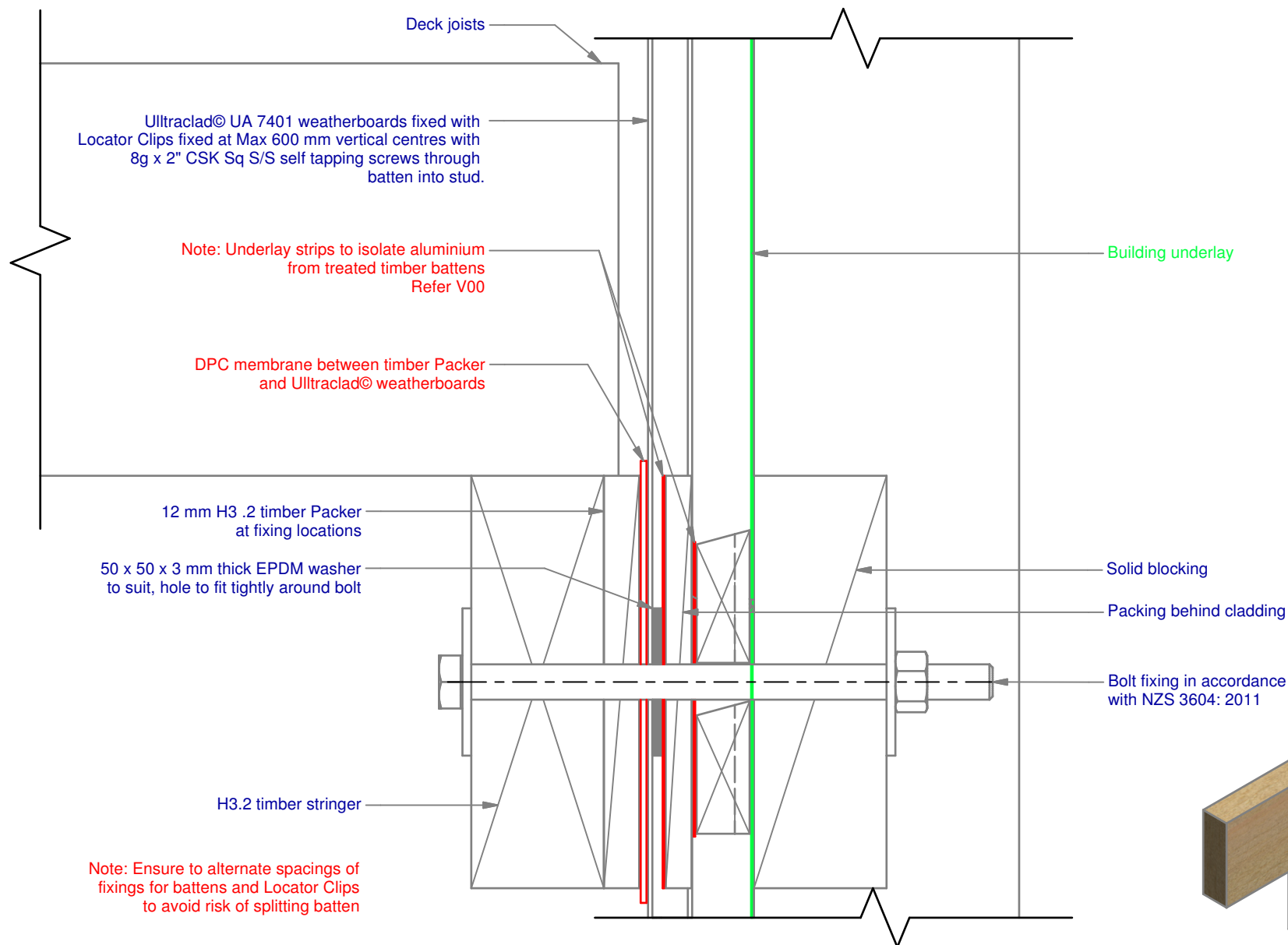
V21

Rev : 08

Parapet on Cavity
UA 7401 INFINITY BOARD

VERTICAL CAVITY SYSTEM
Scale: 1 : 2 @ A4 - 2017

Branz Appraisal #796 2013. (Vertical)



ULLTRACLAD®
ALUMINIUM WEATHERBOARDS

ULLRICH ALUMINIUM CO LTD
PO Box 98 843 Manukau City Auckland 2241
118 Wiri Station Road Wiri 2104 New Zealand
TL 09 262 6262 Ext. 814 Mob 021 541 563
www.ulltraclad.co.nz
© ULLRICH ALUMINIUM - All Rights Reserved

V22

Rev : 08

Deck Junction on Cavity
UA 7401 INFINITY BOARD

VERTICAL CAVITY SYSTEM

Scale: 1 : 2 @ A4 - 2017

Branz Appraisal #796 2013. (Vertical)

Note: Ensure to alternate spacings of fixings for battens and Locator Clips to avoid risk of splitting batten

Ultracalad® UA 7401 weatherboards fixed with Locator Clips fixed at Max 600 mm vertical centres with 8g x 2" CSK Sq S/S self tapping screws through batten into stud.

Building underlay

Cavity batten
Refer V00 Batten Options

Note: Underlay strips to isolate aluminium from treated timber battens
Refer V00

Ultracalad® UA 4863 Vertical Starter Strip fixed to bottom plate at 300 mm centres with 8g x 2" CSK Sq S/S self tapping screws

Ultracalad® UA 4863 with 5 mm diameter drainage holes drilled through base of Starter at 300 mm centres

Aluminium inter-storey flashing 15° slope
(Note: not supplied with Ultracalad® system - contractor to supply as additional flashing)

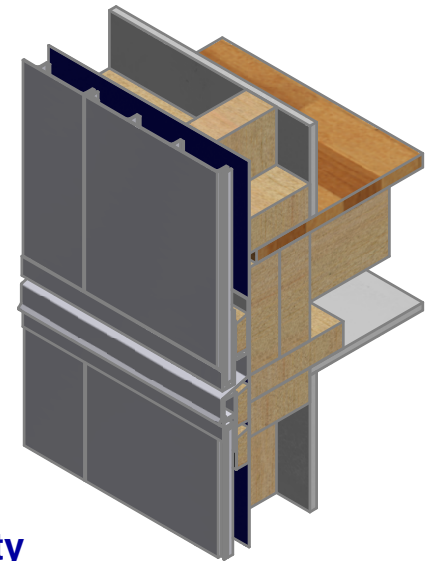
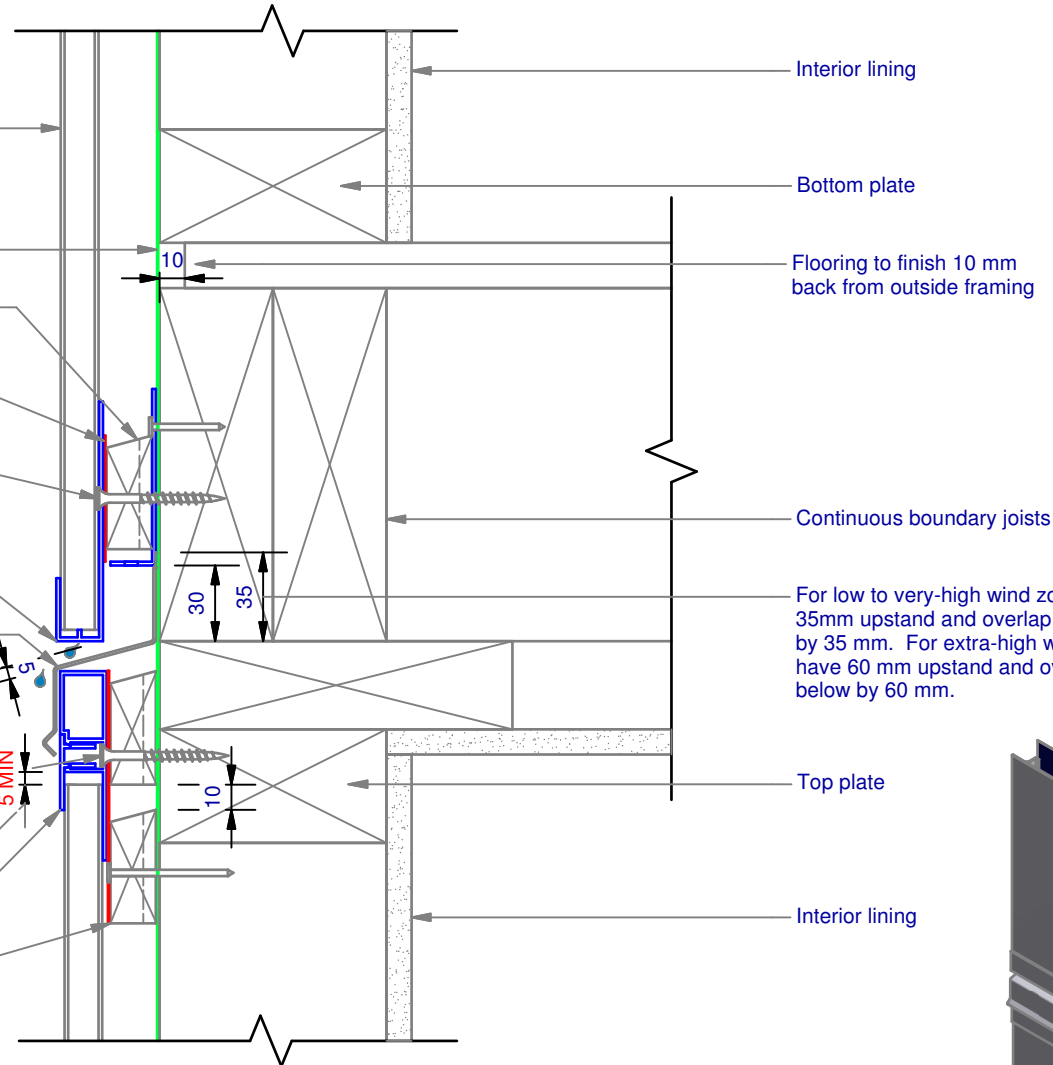
Screw through UA 7584 base at Max 600 mm horizontal centres with 8g x 2" CSK Sq. S/S self tapping screws through batten into stud

Minimum 5 mm clearance to allow for thermal expansion

Ultracalad® UA 5833 Soffit Clip Top

Cavity batten
Refer V00 Batten Options

Note: this detail is required to limit cavities to 2 storeys or 7 m Max - Refer E2/AS1 clause 9.1.9.4



ULLTRACLAD®
ALUMINIUM WEATHERBOARDS

ULLRICH ALUMINIUM CO LTD
PO Box 98 843 Manukau City Auckland 2241
118 Wiri Station Road Wiri 2104 New Zealand
TL 09 262 6262 Ext. 814 Mob 021 541 563
www.ulltracalad.co.nz
© ULLRICH ALUMINIUM - All Rights Reserved

V23

Rev : 08

Inter-Storey Junction on Cavity

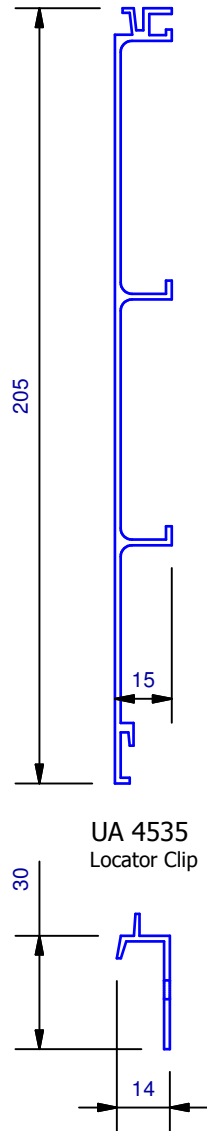
UA 7401 INFINITY BOARD

VERTICAL CAVITY SYSTEM

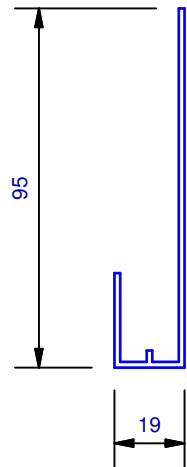
Scale: 1 : 3 @ A4 - 2017

Branz Appraisal #796 2013. (Vertical)

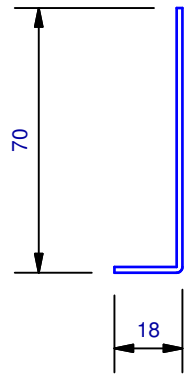
UA 7401
INFINITY BOARD



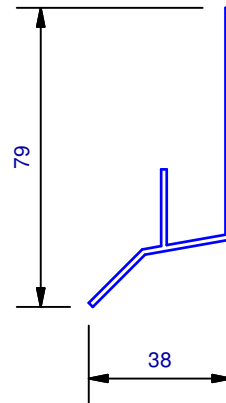
UA 4863
Vertical Board Starter



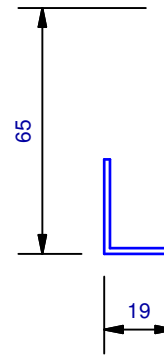
Cavity Vent Strip



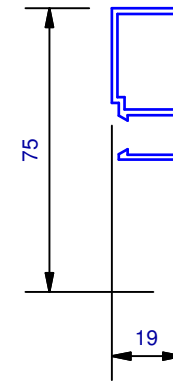
UA 4533
Head Starter



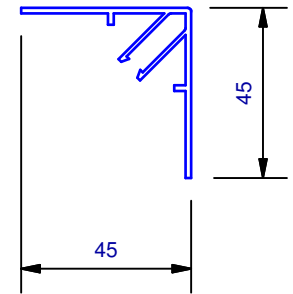
UA 4532
J Moulding



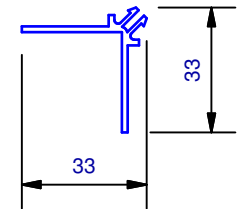
UA 7584
Jamb/Sill Clip Base



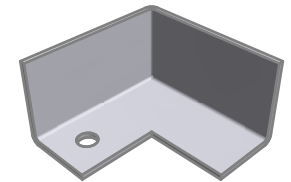
UA 7094
Female Flat Corner



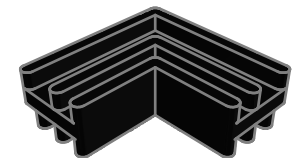
UA 7095
Male Flat Corner



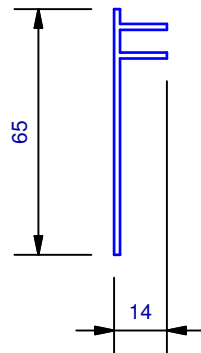
CLADCNRCAP
Corner Cap



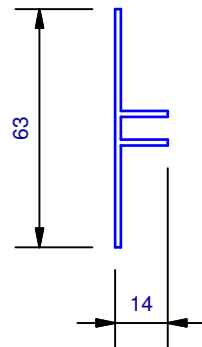
CLADSTAKECNR
Plastic Staking Corner



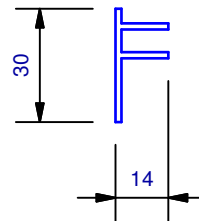
UA 5832
Soffit 65mm Clip Top



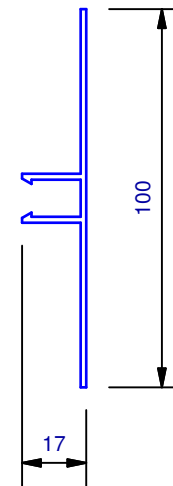
UA 7096
Flat Jointer Top



UA 5833
Soffit 30mm Clip Top



UA 6324
2 Piece Jointer Base



UA 5831
Soffit Clip Base

