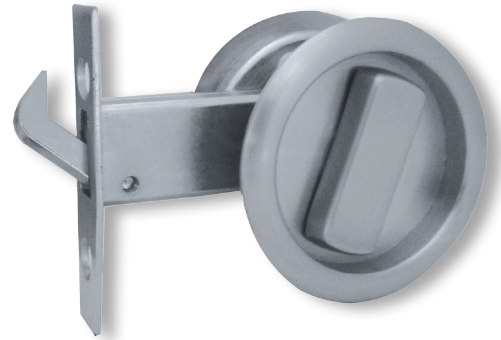




Sliding Cavity Flush Pulls and Lock Sets

Mortice locks & general
hardware



Schlage cavity sliding flush pulls and lock sets provide an ideal solution for all internal cavity sliding door requirements.

Available in square or round profiles. Including passage, privacy, and non-locking flush pull functions. All options are supplied with a door edge finger pull to allow easy retrieval when doors are fully recessed. This range also includes a front adjustable striker plate which eliminates door rattling by ensuring the latch bolt hook fits firmly into the striker plate.

Features

- Privacy, passage and standard pull functions available
- Square and round profiles available
- Low profile and semi-concealed fixings
- Slotted emergency release button provided with privacy function
- Door edge finger pull supplied with all models for easy retrieval of doors out of cavity pockets
- Easy installation on 54mm diameter standard door preparation
- Available in variety of finishes, refer to specifications for details
- Front screw adjustable striker plate to eliminate door rattling

Specification guide

Code prefix	Design	
SRL	Round passage sliding cavity door set - satin chrome plate	14339
	Round passage sliding cavity door set - black	14437
	Square passage sliding cavity door set - satin chrome plate	14338
	Round privacy sliding cavity door set - satin chrome plate	14337
	Round privacy sliding cavity door set - black	14436
	Square privacy sliding cavity door set - satin chrome plate	14336
	Round passage sliding cavity door pull - satin chrome plate	14420
	Round passage sliding cavity door pull - black	14438
	Square sliding cavity door pull- satin chrome plate	14419
	Passage sliding cavity door lock - satin chrome plate	13518
	Passage sliding cavity door lock - polished brass	13084
	Privacy sliding cavity door lock - satin chrome plate	13516
	Privacy sliding cavity door lock - polished brass	13085

1. Code prefix

All codes are prefixed with **SRL**

2. Design & finish

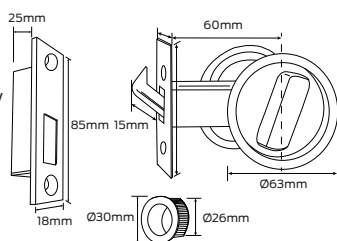
Select the required design & finish e.g. Square passage door set in satin chrome plate **SRL14338**

Specifications

Door type	Timber or metal
Material	Brass, stainless steel, zinc die cast
Finishes	Polished brass, satin chrome plate, black
Warranty	10 year mechanical and finish

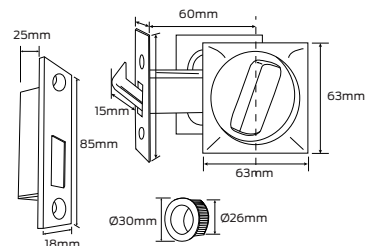
Round passage sliding cavity door set

Finish: Satin chrome plate, black
Door thickness: 32mm to 40mm
Includes: Flush pull with turn snib for both sides of the door, hook latch bolt, adjustable anti-rattle striker plate, door edge finger pull, and screw fixings



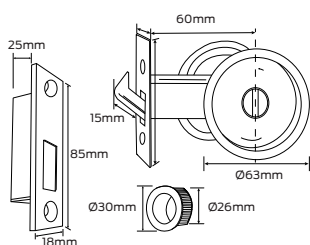
Square passage sliding cavity door set

Finish: Satin chrome plate
Door thickness: 32mm to 40mm
Includes: Flush pull with turn snib for both sides of the door, hook latch bolt, adjustable anti-rattle striker plate, door edge finger pull, and screw fixings



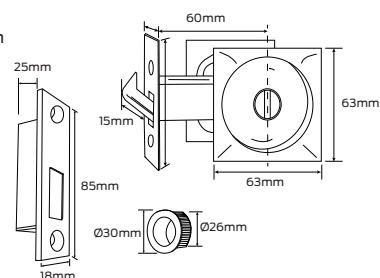
Round privacy sliding cavity door set

Finish: Satin chrome plate, black
Door thickness: 32mm to 40mm
Includes: Flush pull with turn snib for inside and slotted emergency release button for the outside of the door, hook latch bolt, adjustable anti-rattle striker plate, door edge finger pull, and screw fixings



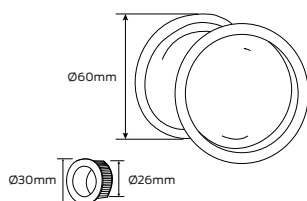
Square privacy sliding cavity door set

Finish: Satin chrome plate
Door thickness: 32mm to 40mm
Includes: Flush pull with turn snib for inside and slotted emergency release button for the outside of the door, hook latch bolt, adjustable anti-rattle striker plate, door edge finger pull, and screw fixings



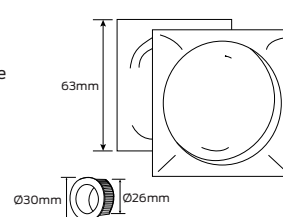
Round sliding cavity door flush pull

Finish: Satin chrome plate, black
Door thickness: 32mm to 40mm
Includes: Flush pulls (non-locking) for both sides of the door, door edge finger pull, and screw fixings



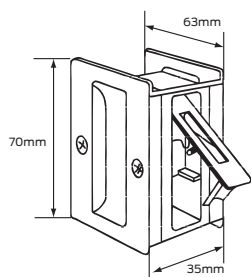
Square sliding cavity door flush pull

Finish: Satin chrome plate
Door thickness: 32mm to 40mm
Includes: Flush pulls (non-locking) for both sides of the door, door edge finger pull, and screw fixings



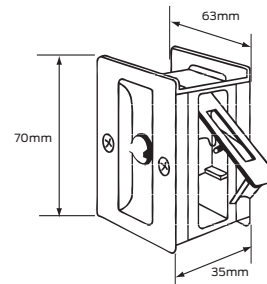
46-100 Passage sliding door latch

Finishes: Polished brass, satin chrome plate
Door thickness: 35mm
Includes: Standard flush pull in one complete unit including all screw fixings



46-101 Privacy sliding door latch

Finishes: Polished brass, satin chrome plate
Door thickness: 35mm
Includes: Privacy flush pull set in one complete unit including all screw fixings





ALLEGION™

PIONEERING SAFETY™

We are
Allegion