

# SIMX INLINE CENTRIFUGAL FANS

## HIGH PERFORMANCE MODELS

| Duct Size | Model   | Performance                     | Order Code |
|-----------|---------|---------------------------------|------------|
| 100mm     | MAN100  | 49 l/s, 176m <sup>3</sup> /hr   | FAN0361    |
| 125mm     | MAN125  | 61 l/s, 220m <sup>3</sup> /hr   | FAN0360    |
| 150mm     | MAN150  | 124 l/s, 445m <sup>3</sup> /hr  | FAN0330    |
| 200mm     | MAN200  | 208 l/s, 750m <sup>3</sup> /hr  | FAN0467    |
| 250mm     | MAN250  | 280 l/s, 1010m <sup>3</sup> /hr | FAN0358    |
| 315mm     | MAN315  | 360 l/s, 1300m <sup>3</sup> /hr | FAN0357    |
| 315mm     | MAN315L | 472 l/s, 1700m <sup>3</sup> /hr | FAN0356    |



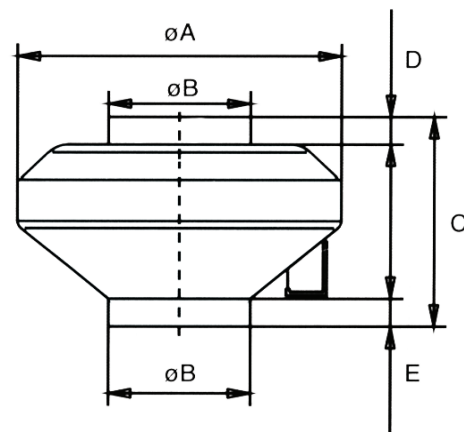
Simx 150mm Inline Fan

- Suitable for a variety of domestic and commercial applications, these inline centrifugal fans provide extremely high performance with a choice of sizes.
- Supported by a 2 year warranty.

Please note: Can be used for supply/extract.

### DIMENSION INFORMATION (MM)

| Model   | A   | B   | C   | D  | E  |
|---------|-----|-----|-----|----|----|
| MAN100  | 250 | 100 | 136 | 50 | 70 |
| MAN125  | 250 | 125 | 147 | 60 | 60 |
| MAN150  | 340 | 150 | 280 | 50 | 75 |
| MAN200  | 340 | 200 | 280 | 50 | 75 |
| MAN250  | 341 | 249 | 230 | 30 | 30 |
| MAN315  | 405 | 315 | 275 | 30 | 30 |
| MAN315L | 405 | 315 | 275 | 30 | 30 |



Dimensions - Simx 150mm Inline Fan