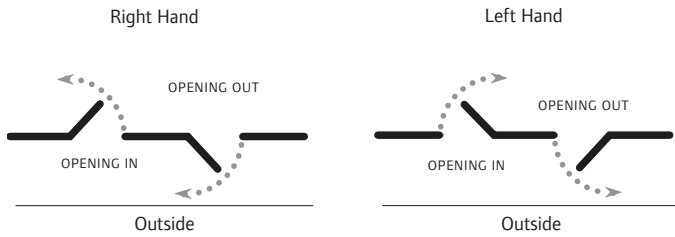


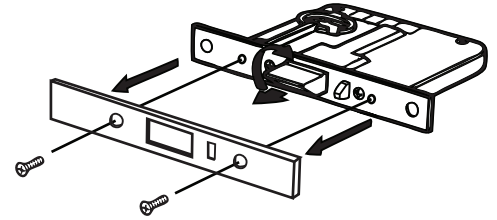


990MF Mortice Lock Installation Instructions

Handing Guide



To Reverse Bolt



1. Remove outer forend.
2. Pull & rotate bolt through 180° clockwise.

990MF Handing/Function Adjustment

V Series handing adjustment (Inside handle free)

To set for left hand

Push in and turn clockwise. Set adjuster as shown.

To set for right hand

Push in and turn anti-clockwise. Set adjuster as shown.

V9/V10/V55/V56

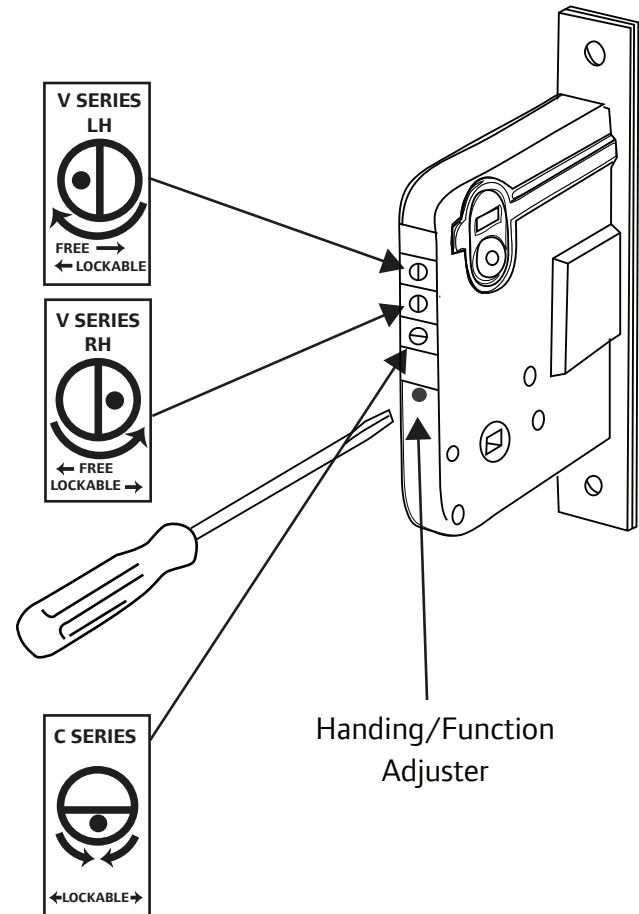
The Locking Bar must be down before installing.

To set for C Series (Both handles lockable)

Set adjuster as shown.

D & S Series Deadlocks & Sliding door locks

Supplied unhandled. Fit cylinder or turn adaptor to appropriate sides. When only one cylinder or turn is used fit plug into unused hole.

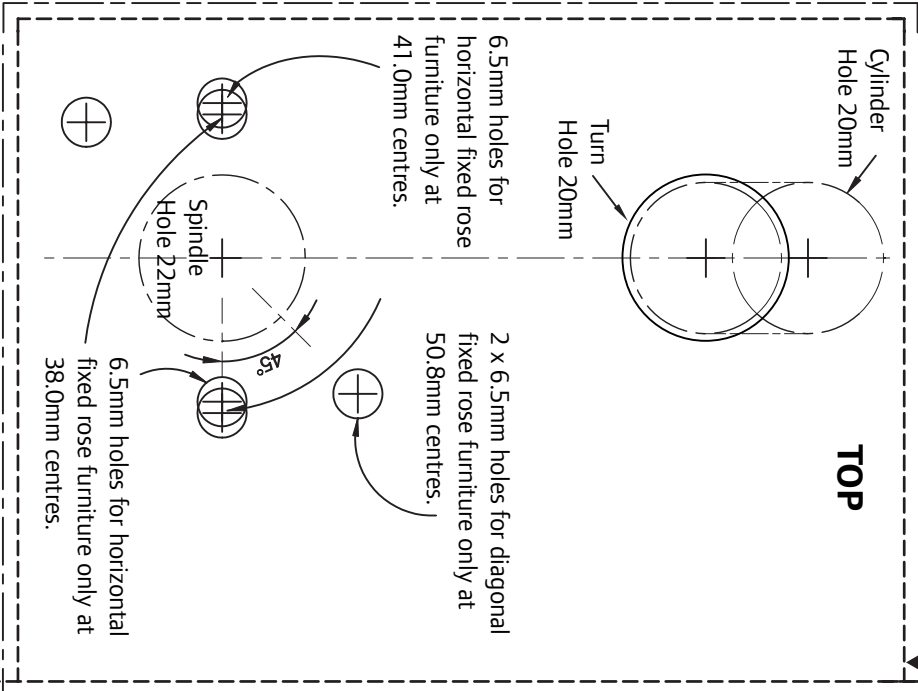


Allegion (Australia) Pty Ltd
Phone 1800 098 094
Website www.allegion.com.au

Allegion (New Zealand) Limited
Phone 0800 477 869
Website www.allegion.co.nz

Mortise Instructions

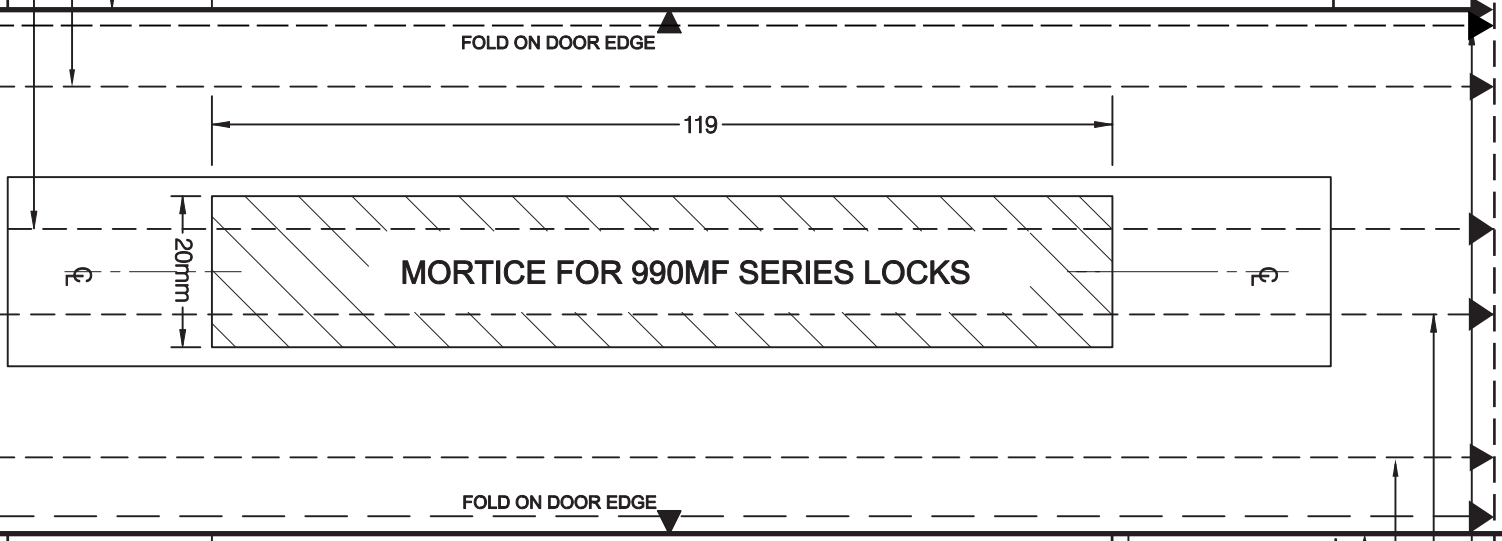
1. Cut mortise slot using template for correct size.
2. Fit lock into mortise, scribe around forend and remove wood to allow flush fit to door.
3. Remove lock and use template to mark and drill holes to suit lock and furniture being used.



DEPTH OF MORTISE IS 92MM FOR 60MM BACKSET

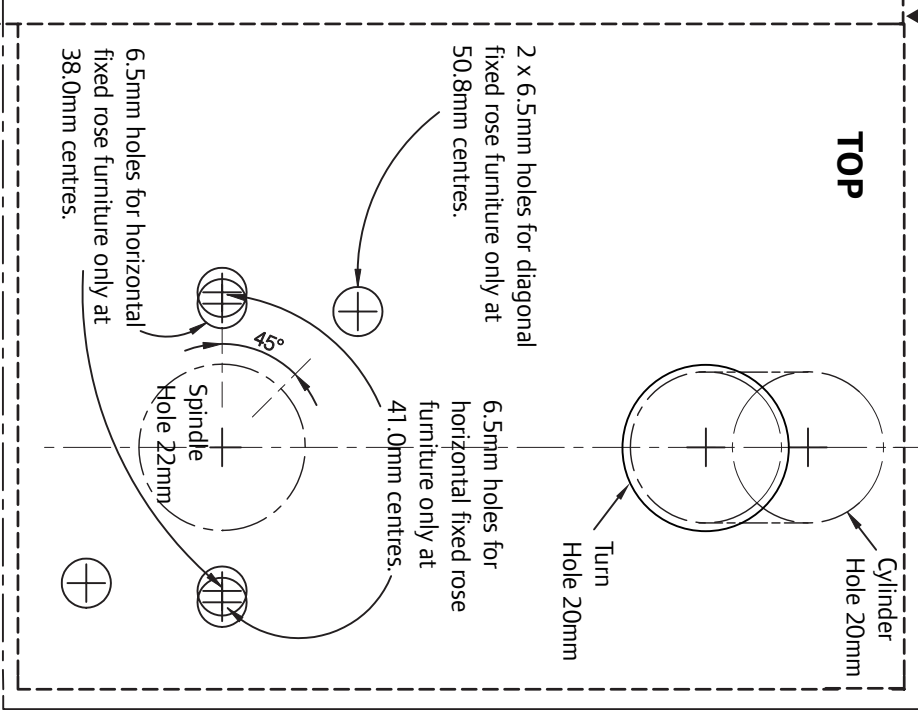
CHECK CAREFULLY:
DO NOT DRILL HOLES RIGHT THROUGH DOOR. THE FURNITURE MAY NOT COVER ANY HOLES THAT ARE INCORRECTLY DRILLED.

- 60mm Backset
- 70mm Backset
- 89mm Backset
- 127mm Backset



- 127mm Backset
- 89mm Backset
- 70mm Backset
- 60mm Backset

IMPORTANT
A MAXIMUM CLEARANCE OF 5mm IS RECOMMENDED BETWEEN LOCK FOREND AND STRIKER PLATE FOR SECURITY REASONS.
990MF LOCKS ARE DESIGNED FOR USE WITH SPRUNG DOOR FURNITURE. THE USE OF UNSPRUNG DOOR FURNITURE IS NOT RECOMMENDED.



DEPTH OF MORTISE IS 92MM FOR 60MM BACKSET

ALL FUNCTIONS EXCEPT NIGHT LATCH OR EMERGENCY RELEASE	NIGHT LATCHES (ON SERIES)	TURN WITH EMERGENCY RELEASE
Centre of hole	Edge of hole	to suit furniture