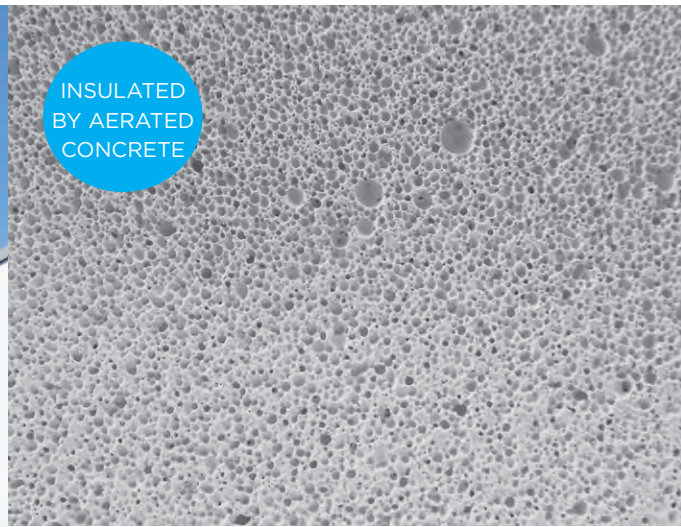




INSULATED
BY AERATED
CONCRETE



Enviro™

AAC Wall Panel



Full Flashing system
compliant to E2/VM1
Weathertight Testing

Enviro™ Panel is a cavity based, lightweight aerated concrete (AAC) panel system, with steel reinforcing through the centre for added strength.

The unique air-cells in the concrete absorb and reduce noise. It's cost effective, quick to install and a strong solid substrate to use to finish plaster buildings. Enviro has a complete flashing system for windows and doors, to stop water from penetrating. But if water does get through Enviro has an excellent airflow cavity system to allow moisture to dry out and weep-holes to drain water out of the wall. AAC products have a very low environmental impact and have exceptional thermal and acoustic values.

Dry Density	525 kg/m ³
Compressive Strength	4.0 Mpa
Dry Shrinkage Value	0.8 mm/m
Water Absorption (by volume)	Up to 24 - 35%
Thermal Conductivity	0.13 w/mk
Sound Transmission Class (STC)	33 dB for 1000Hz
Fire Resistance	1.5 hours

STOCKED IN:
AUCKLAND, WELLINGTON
& CHRISTCHURCH

Panel dimensions: 2200MM x 600MM
Thickness: 50MM

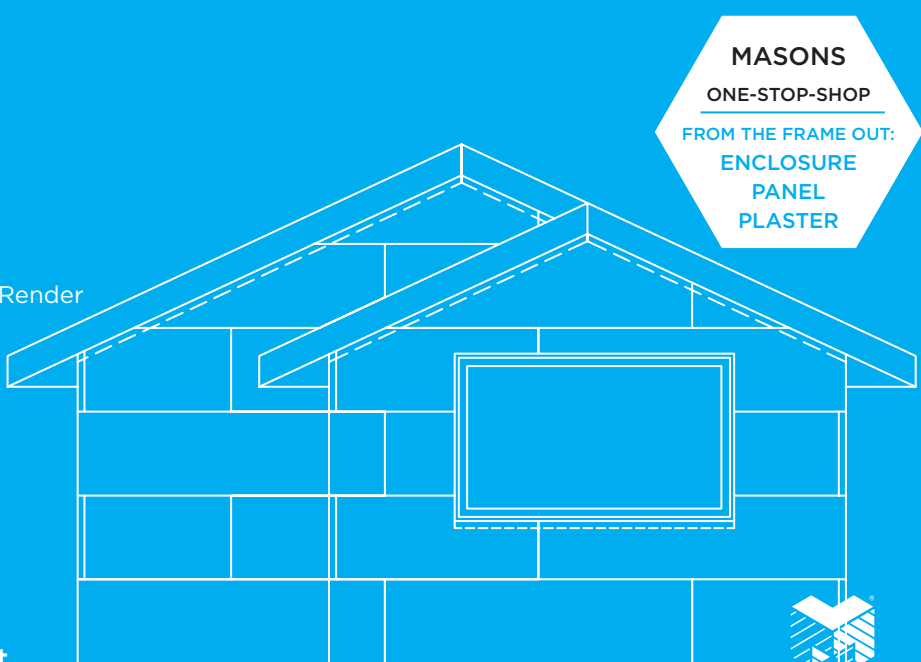


SYSTEM PROCESS

- 1/ Building System Products**
Masons DPC, Building Wrap or UNI, Flashing Tape, PEF Rod ect
- 2/ Cavity Battens**
20mm Poly Battens or
20mm - 45mm Timber Battens
- 3/ Enviro™**
50mm Panel
- 4/ PlastaSeal™ Sealer**
by Masons
- 5/ Fibreglass Mesh 150gsm**
Embedded in 3 mm Skimming Render
- 6/ Skimming Fill-out Coat**
2nd Coat. This coat is optional
- 7/ Selected Finishing Coat**
Masons 1 or 2mm or Adobe
- 8/ Limestop Sealer**
- 7/ Premium High Build Paint**
2 Coats of Exterior Acrylic Paint

Enviro Panel 50mm is used for residential and commercial exterior wall cladding. Enviro 75mm can be used as a quick install flooring solution or fencing system.

DWG, DFX and PDF Detail drawings available from www.mpb.co.nz/cad-details



MASONS
Designed Smart, Built Tough.

Flashing & Bead System

Masons has one of the most comprehensive flashing systems available when it comes to plaster systems.

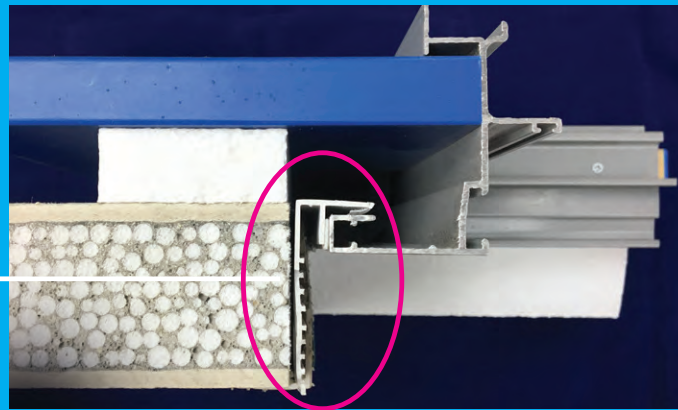
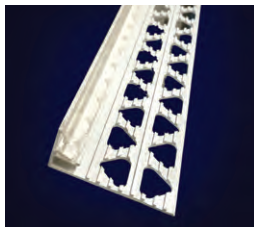
The full flashing system is compliant to E2/VM1 Weathertight Testing. The system is applied to all three of Masons full systems;

- Thermalcrete Lightweight Panel System,
- Enviro AAC 50mm Wall Panel and
- XRV Insulated Panel System.



MASONS
Designed Smart, Built Tough.

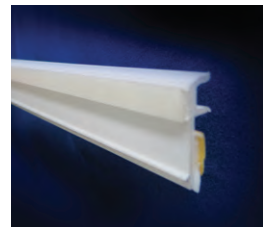
PLASTER JAMB



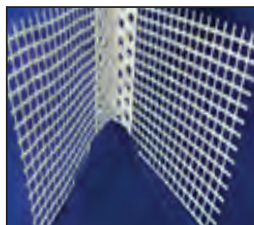
CORNER SOAKER



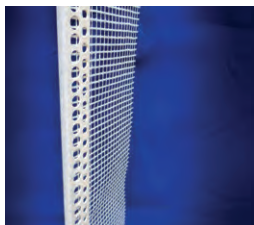
REVEAL BEAD



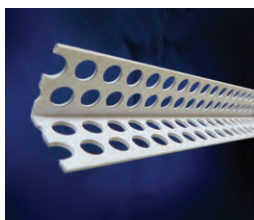
MESHED CORNER BEADS



EDGE FINISHING BEAD



CORNER BEAD



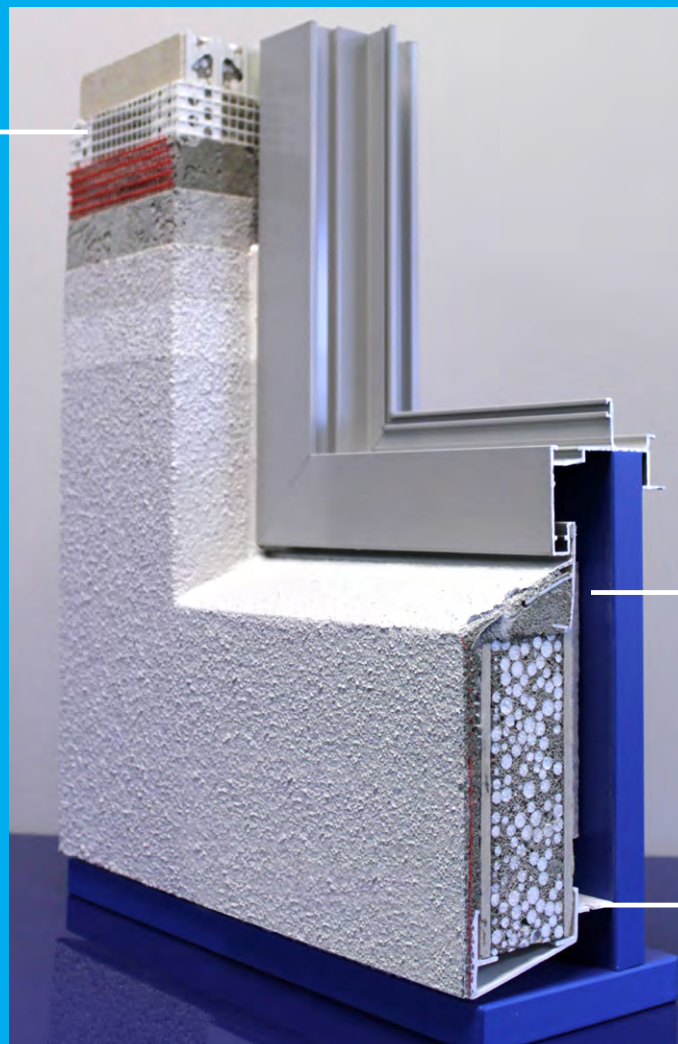
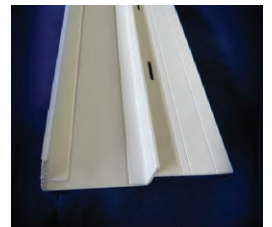
CONTROL JOINT



SILL FLASHING



BASE SHOE/HEAD FLASHING



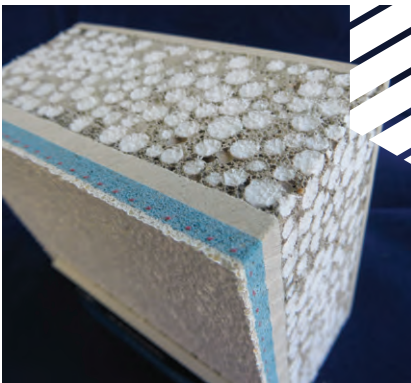


Exterior Plaster Guide

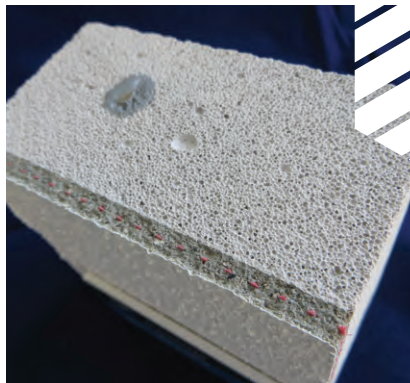
1

CHOOSE A PLASTER SYSTEM

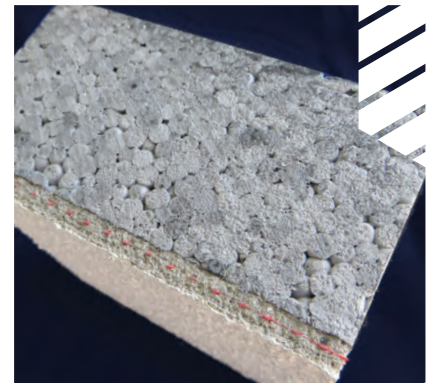
Masons has three substrates in their plaster cladding range; Enviro AAC Panel, ThermalCrete Lightweight Panel System and the XRV Insulated Panel System. Continue reading to find out more about these products and their benefits.



ThermalCrete™
Lightweight Panel System



Enviro™
AAC Panel



XRV™
Insulated Panel System

The **EasySpec** plaster series was created by Masons to outline the plaster process for each substrate. Depending on your chosen substrate Masons has a system for each:

PlastaBrick - Masonry Brick & Block - Plaster System

PlastaTek - Monotek Sheet - Plaster System

PlastaBlock - XRV & Block - Plaster System

PlastaSlab - Tilt Slab - Plaster System

Bagged - Bagged Brick & Block - Plaster System

2

TEXTURE AND PAINT SELECTION

Masons have a wide variety of choices for your texture finish. Please discuss the desired finish with your client and the plasterer. We recommend the plasterer applies a test-patch for sign-off by the client.

When making a choice on colours to complete the final look of the building please consider the following points:

Exterior plaster can be affected by excessive heat; the primary source of heat is the sun.

- Masons recommends that colours with light reflective values (LRV) of less than 25% are never used on Masons Plaster Cladding Systems.
- Masons Plaster Systems recommends that colours must not exceed an LRV of 25%, with the exception of Masons Systems applied over cement sheet substrates like Monotek, where the Building Code's acceptable solution states that colours must not exceed an LRV of 40%.

“One-Stop-Shop”

ENCLOSURE SYSTEM - SUBSTRATE - FLASHINGS - PLASTER

QUOTING

Masons have a comprehensive database of Plaster Applicators nationwide, and your dedicated sales representative will advise you on who is the best suited applicator for your project.

The applicator will provide an obligation-free quote to you directly for your project. After accepting the quote, it is the main contractor/builder's responsibility to liaise directly with the applicator in regards to terms and conditions including on-site starting dates and timeframes.

Masons are the Manufacturer and supplier of your selected system, therefore your selected system can only be installed by a Licensed Plaster Applicator.

Please contact the Masons Head Office on 0800 522 533.

MASONS BUILDING PRODUCTS "One-Stop-Shop"

Masons are the only company in New Zealand who can offer all of the products from the FRAME out to the FINISHED exterior plaster cladding system.

These products include:

ENCLOSURE: Barricade FR Building Wrap or UNI Flexible Air Barrier, damp proof coursing, window flashing tape etc.

SUBSTRATE: Your choice of substrate; Thermalcrete, Enviro AAC or XRV.

FLASHINGS: Comprehensive Flashing System compliant to E2/VM1 Weathertight Testing.

PLASTER: Cementitious, Acrylic plaster products and additives.

Using a complete system from one recognised supplier is vital when the demands from the council and NZBC regarding product warranties and appraisals are higher than ever.

PRODUCT DOCUMENTATION AND SPECIFICATION

Masons has a user-friendly website where all the product files (incl DWG and DXF CAD drawings) can be found and downloaded by a click of a button. Please **visit mpb.co.nz** for all your file requirements.

Alternatively we are associated with the Specification websites below.

If you are a member of one of these sites please search for Masons to bring up all our products.

masterspec **mi**products **PRODUCTSPEC** **SMARTSPEC**  **eboss**

THE MASONS PERFORMANCE GUARANTEE

Masons complete plaster systems (Thermalcrete, Enviro, XRV, Plastabrick) come with a 15 year system warranty. Alternative EASYSPEC systems hold a 7 year system warranty.

On completion of your project you will need a Producer Statement from your applicator and a Masons Product Warranty to receive a final Code of Compliance from your local territorial authority. It is the responsibility of your Licensed Plaster Applicator to complete the paperwork for your required producer statement.

All documentation can be downloaded from www.mpb.co.nz or the above specification websites.

By specifying Masons you can be assured that you are being supported by a reputable New Zealand company who has been in the building industry for many years.



" We have been using the Masons panel and plaster systems for several years now. We are very happy with the quality of the products, the systems and the support we get from the Masons team. We would recommend Masons products to anyone."

Dean Tucker - Prime Plastering Ltd



FLX™

Acrylic Render System

CONTACT
MASONS
FOR LICENSED
APPLICATORS



FLX gives the client and architect extra reassurance around adding extra protection to the house.



FLX™ is a highly flexible, durable and water-resistant acrylic plaster membrane, that is applied over substrates to assist in providing resistance against cracking.

More architects are opting for Flexible Acrylic Plaster instead of cement based plaster. Cracking in any plaster coating is not only unsightly but cracking in the cladding can allow water into the house and begin the process of expensive building damage.

With Masons FLX™ you are wrapping your entire house with a flexible, durable, water-resistant render, greatly reducing the chance of moisture damage to the building through the substrate.

This non-cement based water-borne acrylic plaster system contains aggregate to provide flexibility and excellent adhesion qualities, making it a favourite among plasterers.

AVAILABLE IN A 1, 2 OR 3MM TEXTURE.

FLX™ has a 20 Year system warranty, is manufactured in New Zealand for New Zealand conditions and it's a proven product that has been on the market for over 10 years.



SYSTEM PROCESS

- 1/ Selected Substrate**
Suitable for multiple substrates
- 2/ Optional Levelling Coat**
See Data Sheet for more info
- 3/ PlastaSeal™ Sealer**
from Masons
- 4/ FLX™**
Bedding Plaster 2-3mm thick with 150gsm fibreglass mesh embedded in the centre
- 5/ Optional Pre-coloured Texture**
from Masons (replaces one coat of paint)
- 6/ Premium High Build Paint**
2 Coats of Exterior Acrylic Paint



Flexible, Strong, Tough
& Water Resistant



Have a bash!
Order your **FREE** sample
0800-522 533

TEXTURES

Masons have a wide variety of choices for your texture finish.

Depending on your plasterer's technique the results may vary from the sample selection below.

Please discuss the desired finish with your client and the plasterer.

We recommend the plasterer applies a test-patch for sign-off by the client.



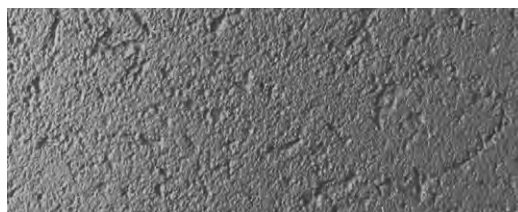
1MM SPONGE



1MM FLOAT



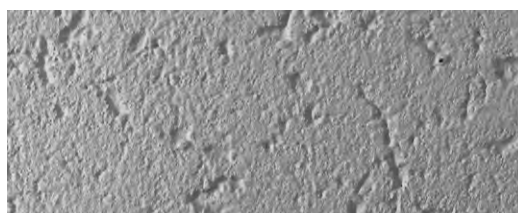
2MM SPONGE



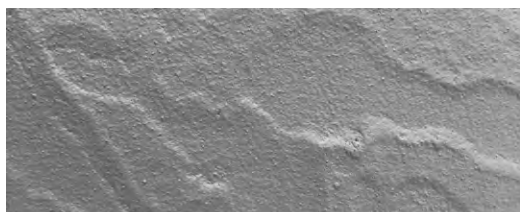
2MM FLOAT



3MM SPONGE



3MM FLOAT



ADOBE



BAGGED

PAINT SELECTION

When making a choice on colours to complete the final look of the building please consider the following requirements for paint requirements:

- All of Masons plaster systems require to be finished with 2 coats of Exterior Acrylic - Premium High Build Paint.

Exterior plaster can be affected by excessive heat; the primary source of heat is the sun.

- Masons recommends that colours with light reflective values (LRV) of less than 25% are never used on Masons Plaster Cladding Systems.
- Masons Plaster Systems recommends that colours must not exceed an LRV of 25%, with the exception of Masons Systems applied over cement sheet substrates like Monotek, where the Building Code's acceptable solution states that colours must not exceed an LRV of 40%.

SPECIFY **MASONS** BUILDING PRODUCTS WITH YOUR **MASONS** CLADDING SYSTEM



MASONS is the only company in New Zealand who can offer the full range of products needed for enclosure, from Masons full Wrap Enclosure System to Masons Plaster or Durali Weatherboard Cladding.

INNOVATIVE

Masons excels in bringing new, innovative, top quality products to the NZ building market for an honest price, which has given the brand trust and credibility under its ever expanding customer base.

TESTED & APPROVED

Most of Masons products have been tested and passed by CODEMARK.

READILY AVAILABLE

Through the following main merchants:



OUR FULL BUILDING PRODUCT RANGE CAN BE VIEWED **ONLINE**
OR ORDER THE LATEST **TRADE CATALOGUE** FROM **MASONS.NZ**

