

# MANROSE CLASSIC INLINE FAN/LIGHT KITS

## EL EXTRACT-A-LITE/LED MODELS

Duct Size	Model	Switching	Performance	Order Code Halogen / LED
100mm	EL100S	Standard	31 l/s, 110m <sup>3</sup> /hr	FAN0420 / FAN5373
100mm	EL100T	Timer	31 l/s, 110m <sup>3</sup> /hr	FAN0438 / FAN5374
125mm	EL125S	Standard	36 l/s, 130m <sup>3</sup> /hr	FAN2037 / FAN5371
125mm	EL125T	Timer	36 l/s, 130m <sup>3</sup> /hr	FAN2038 / FAN5372
150mm	EL150S	Standard	109 l/s, 394m <sup>3</sup> /hr	FAN0803 / FAN5369
150mm	EL150T	Timer*	109 l/s, 394m <sup>3</sup> /hr	FAN0804 / FAN5370



Halogen/LED EL150S

\* Includes a 7 minute fixed timer.

- The fan is mounted in the ceiling space, and is therefore able to draw steam directly from source, while at the same time providing spot lighting within your bathroom.
- Choose either an energy efficient LED or halogen lamp.
- These fans have ball bearing motors to prolong the life of the motor.
- Supported by a 5 year warranty.

## ACCESSORIES

### Halogen Model

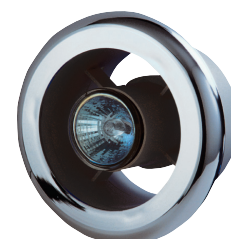
Fits Model	Diffuser	Colour	Order Code
EL150	Incl Halogen	White	DCT1169
EL150	Incl Halogen	Chrome	DCT1171
EL125	Incl Halogen	White	DCT2121
EL125	Incl Halogen	Chrome	DCT2120
EL100	Incl Halogen	White	DCT0360
EL100	Incl Halogen	Chrome	DCT0362

### LED Model

Fits Model	Diffuser	Colour	Order Code
EL150	Incl LED & Driver	White	DCT3209
EL150	Incl LED & Driver	Black	DCT4255
EL150	Incl LED & Driver	Chrome	DCT3208
EL125	Incl LED & Driver	White	DCT3207
EL125	Incl LED & Driver	Chrome	DCT3206
EL100	Incl LED & Driver	White	DCT3205
EL100	Incl LED & Driver	Chrome	DCT3204



150mm LED-EL Diffusers White



125mm Halogen-EL Diffuser Chrome

## GENERAL INFORMATION

Model	Diffuser Cut-Out	Interior	Exterior Grille	Duct Type	Length of Duct included
EL100	115mm	White or Chrome Extract-a-lite	White Eggcrate	Flexible PVC	3m supplied (should not be extended)
EL125	145mm	White or Chrome Extract-a-lite	White Eggcrate	Flexible PVC	4m supplied (should not be extended)
EL150	165mm	White or Chrome Extract-a-lite	White Eggcrate	Flexible PVC	5m supplied (you can add up to 6m extra duct)

Please note: Diffuser cut out size is a nominal diameter for a circular cut-out.

### Switching Options

1. Standard - Operates from remote switch (not supplied).
2. Timer - Fan operates from a switch and continues to run for a preset time after switching off. The 100 and 125mm models are adjustable

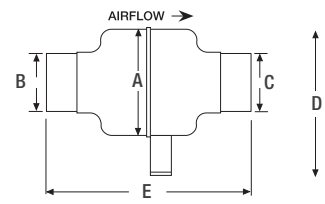
between 1-20 minutes, whereas the 150mm models include a fixed 7 minute timer. Both require: permanent phase and switched phase.

**NOTE: All fan flow rates quoted are free air delivery.**

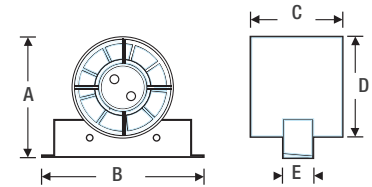
**Performance will be affected by the length of ducting used.**

## DIMENSION INFORMATION (MM)

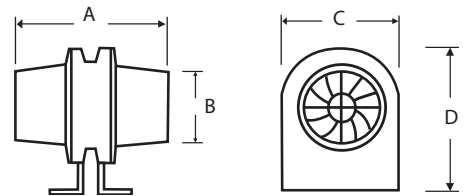
Model	A	B	C	D	E	F	G	H
EL100	130	155	90	100	27	140	74	98
EL125	150	155	99	118	27	170	74	118
EL150	200	143	170	185	-	200	74	148



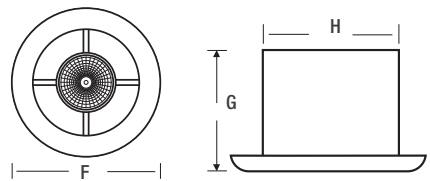
Dimensions - EL100



Dimensions - EL125



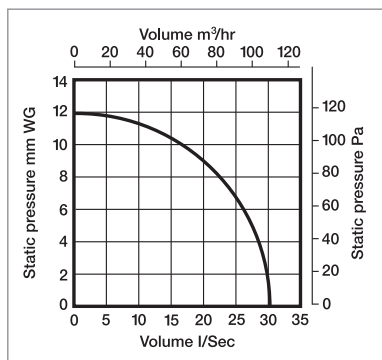
Dimensions - EL150 Fan



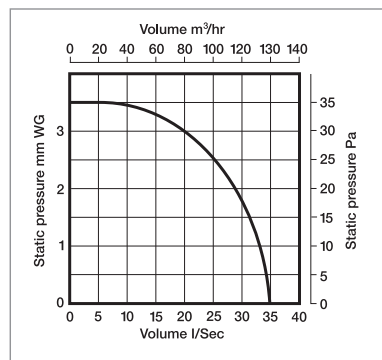
Dimensions - EL Extract-a-lite Diffuser

## TECHNICAL SPECIFICATION & PERFORMANCE DATA

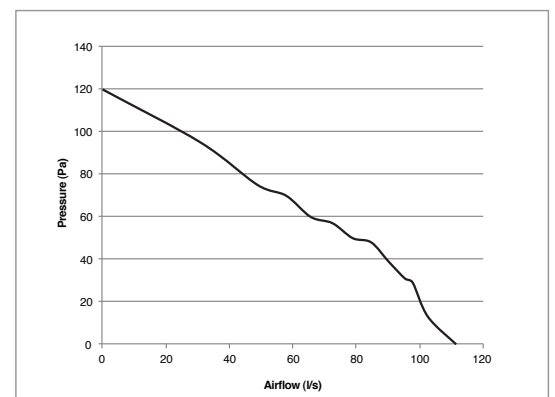
Model	EL100	EL125	EL150
Fan	CFD200	ID125	Hyper
Power	220 - 240V	220 - 240V	220 - 240V
Fan Performance	31 l/s, 110m <sup>3</sup> /hr	36 l/s, 130m <sup>3</sup> /hr	109 l/s, 394m <sup>3</sup> /hr
Fan Wattage	20W	25W	27W
Maximum Pressure	120 Pa	35 Pa	120 Pa
Fan Speed	1400 RPM	2000 RPM	2650 RPM
Light	12V 50W Halogen	12V 50W Halogen	12V 50W Halogen
	12V 3W LED	12V 3W LED	12V 3W LED
Total Wattage	70W	75W	88W
Sound Level	45 dB(A)	41 dB(A)	38 dB(A)
Max. Operating Temp	40°C	40°C	70°C
IP Rating	IPX4	IPX4	IPX2



Performance - EL100



Performance - EL125



Performance - EL150