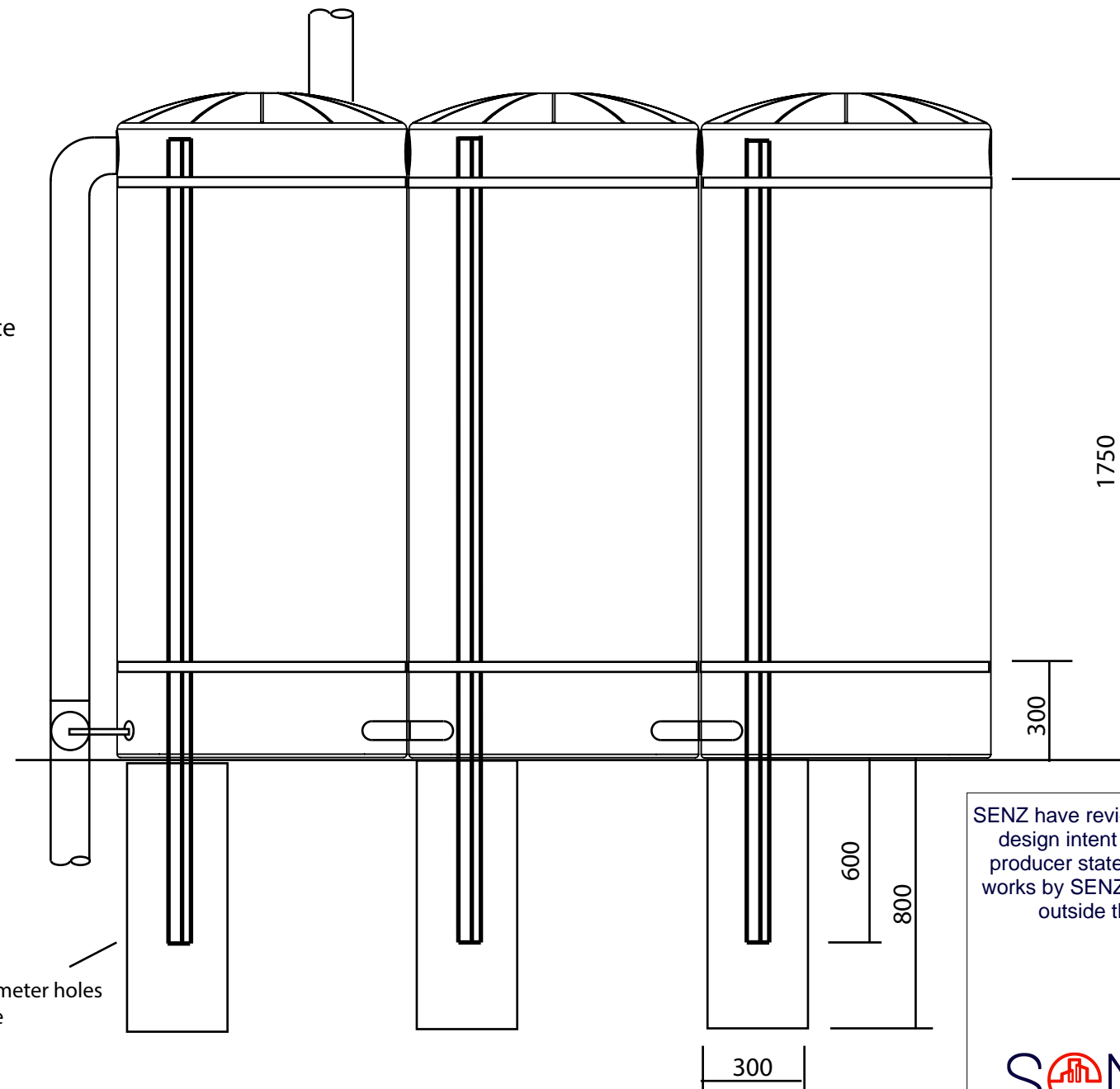


Galvanized 50x50x2.5
C450 Square hollow
section with Mitek
Lumberlock Multibrace
G300 Z275



V - Finished ground level

SENZ have reviewed this drawing for its compliance with the structural design intent & building code (B1), as referenced in the structural producer statement (PS1). Please refer to the PS1 for the extent of works by SENZ. We take no responsibility or accept liability for items outside the scope of our signed PS1. Job: 059-002

SENZ
Structural Engineers New Zealand

Sadeer Kattan
BE(Hons), CPEng, CMEngNZ

13/09/2024

NOTE:
Tanks are delivered as individual 1,000L pods, assembly required onsite
Tanks and 50mm connections kit supplied. All other pipes and seals
supplied by others. For installation on good ground as per NZS3604,
reinforced concrete or pavers

Each 1000L pod Outlet & Inlet Details		
	Position	Details
Outlets	3	2 x 16 mm BSP
	4.30 & 7.30	2 x 50 mm BSP

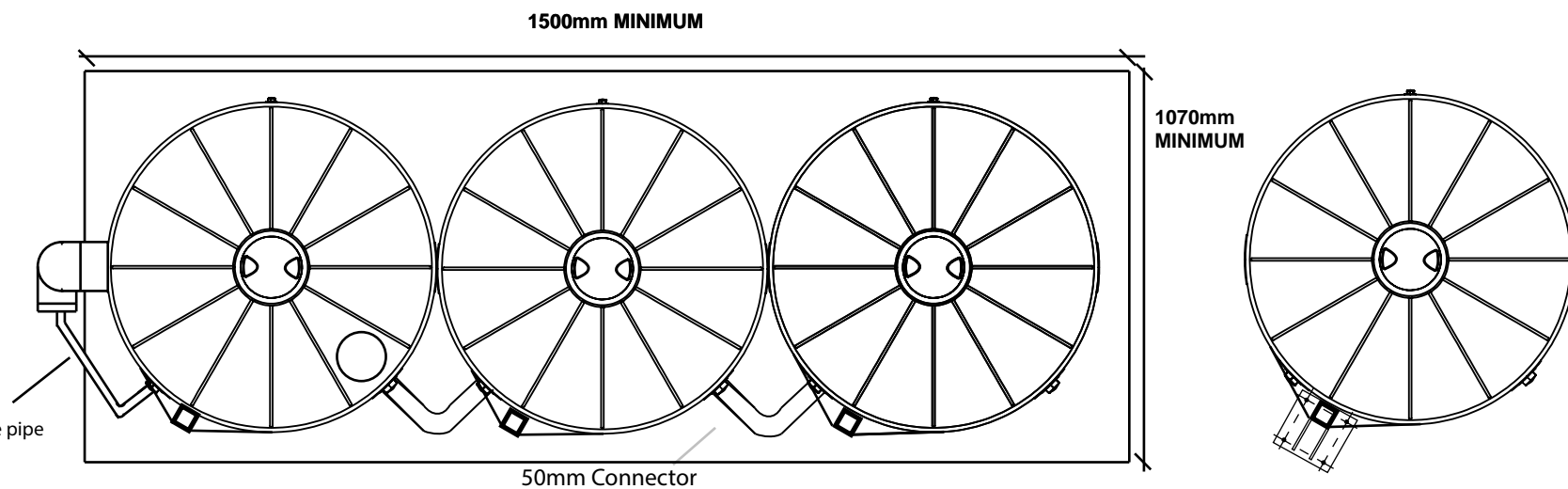
stormBANK
Devan Plastic Limited

Typical Install drawing

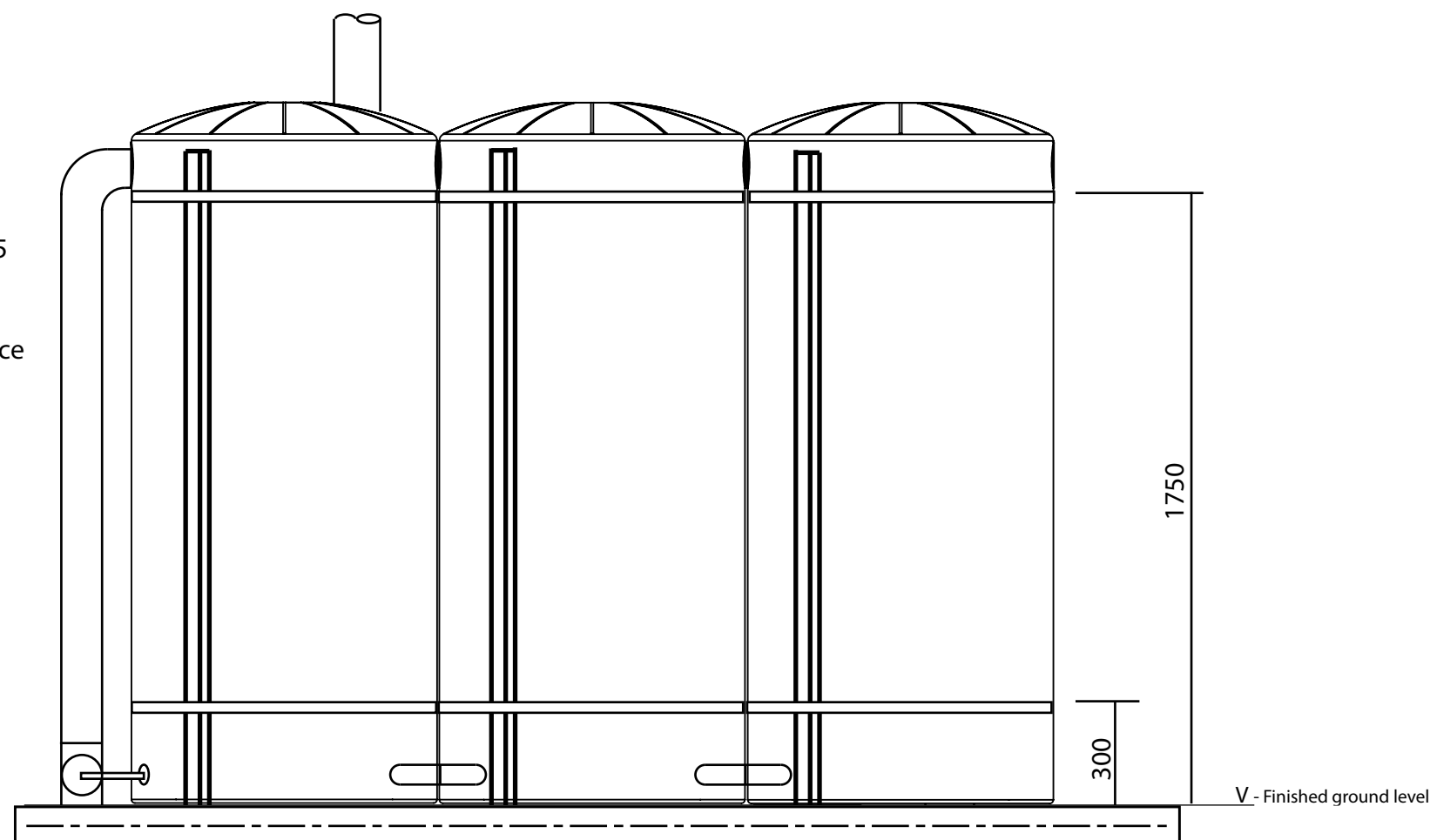
SCALE NTS	REV 1.0	SHEET 1/2	CODE N/A
--------------	------------	--------------	-------------

Weight: N/A

DIMENSIONS ARE APPROXIMATE DUE TO VARIATIONS DURING THE MANUFACTURING PROCES



Galvanized 50x50x2.5
C450 Square hollow
section with Mitek
Lumberlock Multibrace
G300 Z275



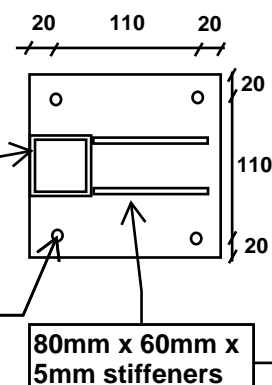
150mm thick min. 25 MPa Concrete slab with
SE62 mesh, laid on suitably compacted base
course on good ground as per NZS3604.

Note:
When laying mesh, avoid bolt locations

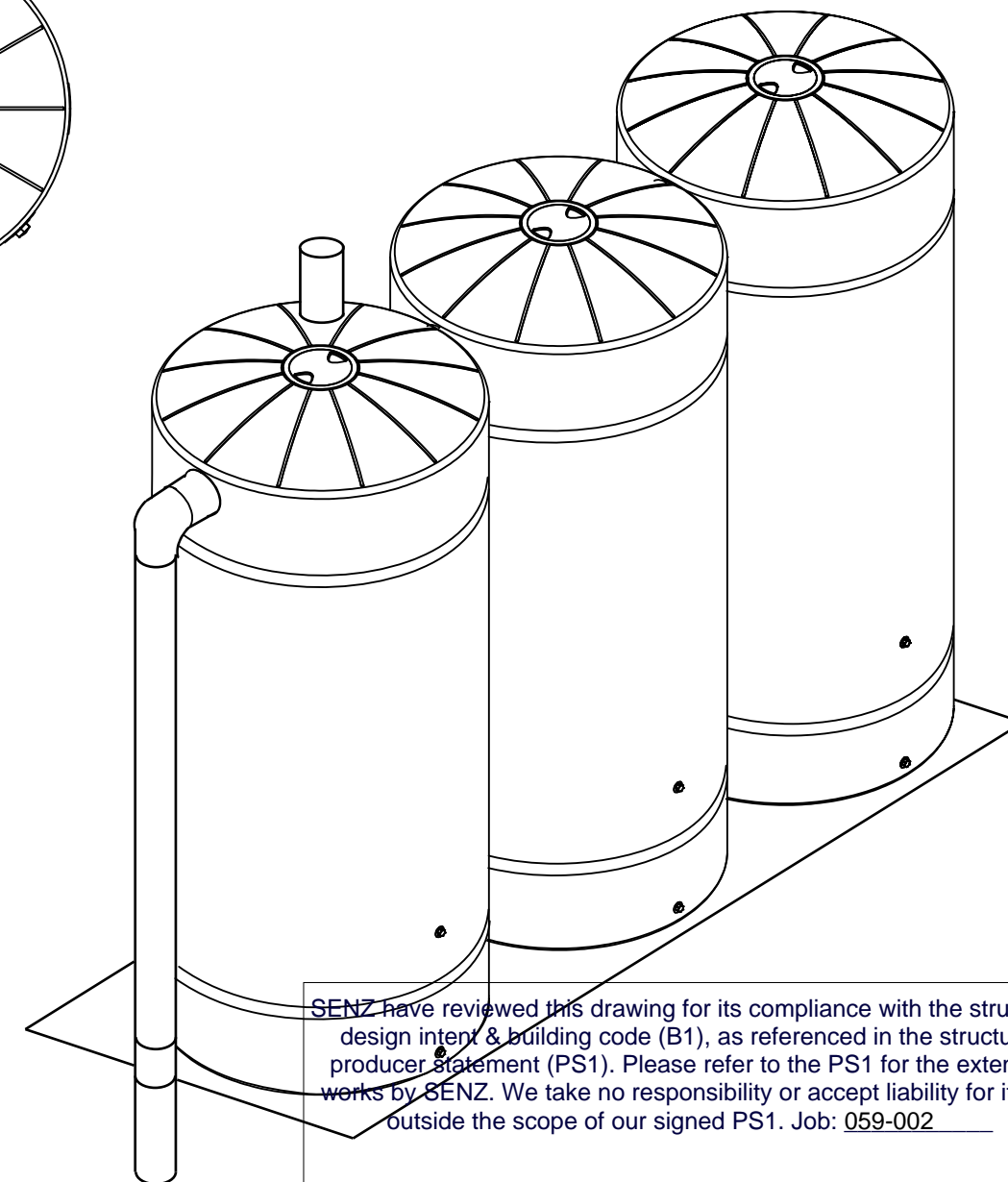
NOTE:
Tanks are delivered as individual 1,000L pods, assembly required onsite
Tanks and 50mm connections kit supplied. All other pipes and seals
supplied by others. For installation on good ground as per NZS3604,
reinforced concrete or pavers

50x2.5 SHS welded to
150x150x10 Mild Steel
Plate with 5mm FWAR

4xM12 Galvanised Bolts Grade 5.8,
embed min.110mm into slab and
epoxied with EPCON C6 Plus. 200mm
minimum edge distance.



Each 1000L pod Outlet & Inlet Details		
	Position	Details
Outlets	3	2 x 16 mm BSP
	4.30 & 7.30	2 x 50 mm BSP



SENZ have reviewed this drawing for its compliance with the structural
design intent & building code (B1), as referenced in the structural
producer statement (PS1). Please refer to the PS1 for the extent of
works by SENZ. We take no responsibility or accept liability for items
outside the scope of our signed PS1. Job: 059-002

SENZ
Structural Engineers New Zealand

Sadeer Kattan

13/09/2024

BE(Hons), CPEng, CMEngNZ

stormBANK
Devan Plastic Limited

Typical Install drawing

SCALE NTS	REV 1.0	SHEET 2/2	CODE N/A
--------------	------------	--------------	-------------

Weight: N/A

DIMENSIONS ARE APPROXIMATE DUE TO VARIATIONS DURING THE MANUFACTURING PROCES