

**graphex.**

Masonry Overlay



## Graphex Masonry Overlay Façade System Specification

---



### WHAT IS THE.....

GRAPHEX Masonry Overlay System?

Our premium GRAPHEX panels applied externally to insulate masonry buildings.

Modern architecture places tremendous demand on the building envelope. This System offers the flexibility to meet these demands in a cost effective manner whilst providing a complete Thermal envelope to the exterior, all the while protecting the structure.

### Proven Technology

The GRAPHEX Masonry Overlay System incorporates 40, 60, or 80mm GRAPHEX insulation panels which are mechanically fixed over solid filled masonry block creating a thermally efficient, robust exterior cladding.

Protected with our lamina of hand applied modified renders, fibreglass reinforcement all finished with your choice of texture from our wide range incorporating 'genuine' Resene colours.

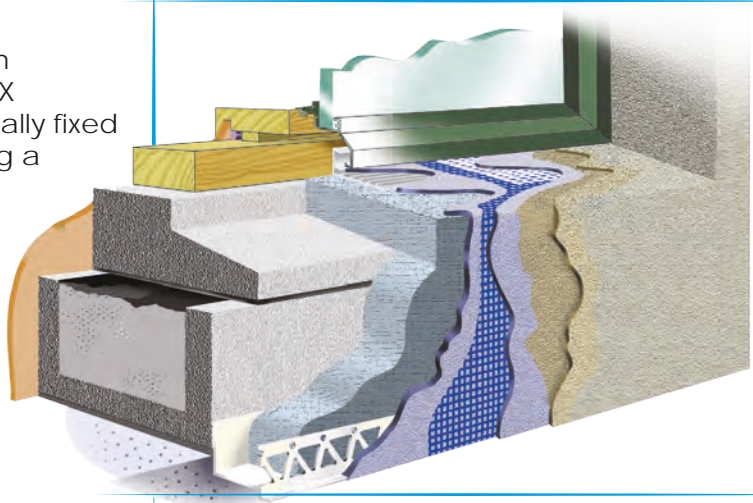
### Attractive and Durable

This System carries our written 15 year Performance Guarantee, and 5 year Workmanship Warranty from your qualified LBP Registered Plasterer.

The GRAPHEX Masonry Overlay System includes our premium OnSite Assistance programme providing surety of performance from installation to finish.

### System Features:

- Insulation thickness - 40, 60, or 80mm
- External Thermal envelope
- Hand Plastered
- Fibreglass reinforced
- Registered LBP supply & install
- Performance Guarantee
- Patented EdgeSeal window flashing suite
- 'Genuine' Resene Colour Range
- Technical OnSite Assistance



# Resene

## Construction Systems



# graphex

## MASONRY OVERLAY

\*1 Natural Mineral texture finishes are available upon request. All our Natural Mineral textures are finished with a Resene Construction Systems approved 3 coat paint system.



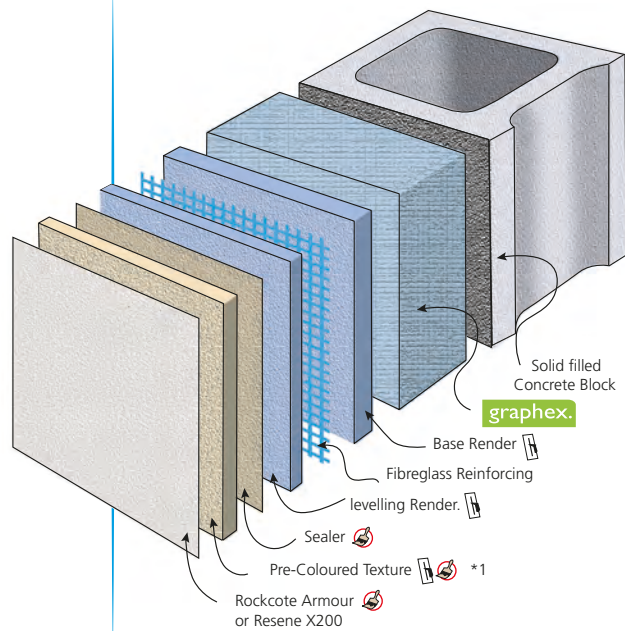
Indicates Hand Plastered applications



Indicates pre-coloured applications

530 476  
477 500  
681 633  
BRANZ Appraised 706 553

**FPB**  
.CO.NZ  
FUTURE-PROOF BUILDING



	<b>INTEGRA Façade</b> Light Weight Concrete	<b>INTEGRA Flooring</b>	<b>INTEGRA Fencing</b>	<b>GRAPHEX</b> Insulated Façade	<b>GRAPHEX</b> Solid	<b>GRAPHEX</b> Masonry Overlay	<b>Masonry Block</b>	<b>Fibre Cement</b>	<b>LiteRock</b>	<b>Brick</b>	<b>ICF (Polystyrene Blocks)</b>	<b>Tilt Panel</b>	<b>Milano</b> interior	<b>Earthen</b> interior	<b>Marakesh</b>
--	--	-------------------------	------------------------	---------------------------------	----------------------	--------------------------------	----------------------	---------------------	-----------------	--------------	---------------------------------	-------------------	------------------------	-------------------------	-----------------

Insulated	○	○		○	○	●					○				
Impact Resistance	○	○	○	○	○	●	○	○	○	○	○	○		○	
Acoustic	○	○	○		○	●	○			○	○	○		○	
Resene Colours	○		○	○	○	●	○	○	○	○	○	○	○	○	○
BRANZ	○			○	○	●		○	○						
Fire Tests	○			○	○	●	○	○	○	○	○	○	○	○	○
FPB	○	○	○	○	○	●	○	○	○	○	○	○	○	○	○
Full Render System	○		○	○	○	●	○	○	○	○	○				
Substrate supplied	○	○	○	○		●									
Acrylic Texture	○		○	○	○	●	○	○	○	○	○	○			
Mineral Texture	○		○	○	○	●	○	○	○	○	○	○	○	○	○
Cavity System	○			○				○	○						
GreenSite	○	○	○	○	○	●	○	○	○	○	○	○		○	
Masonry Construction	○	○	○		○	●	○			○	○	○			
Window Reveals	○			○	○	●	○			○	○	○			

**Resene**   
Construction Systems

**ROCKCOTE**  **Plaster Systems**

0800 50 70 40  
www.reseneconstruction.co.nz

# Graphex Masonry Overlay System - Graphex Overlay 50mm Panel on Concrete Block - Acrylic RenderSpec

## General

## Building Code Compliance

If the project has a building consent then the following clauses apply.

### Durability

The work covered by this part of the specification has been designed and constructed to meet the durability performance requirements of NZBC B2.

### On Going Maintenance Instructions

Provide ongoing maintenance instructions required to meet the performance requirements of the NZBC.

### Substrate

All the appropriate inspections are to be carried out by a BCA representative and that it complies with the NZBC requirements.

## Documents

### Abbreviations

The following abbreviations are used throughout this work section:

### Documents to also refer to where applicable

- NZBC B1 Structure
- NZBC B2 Durability
- NZBC E2 External Moisture
- NZBC F2 Hazardous Building Materials
- AS/NZS 1170.2 Structural design actions - Wind actions
- NZS 3602 Timber and wood-based products for use in building
- NZS 3603 Timber structures standard
- NZS 3604 Timber framed buildings
- BRANZ Bulletin 353 Ground clearances
- BRANZ Bulletin 418 Weathertightness do's and don'ts
- BRANZ Bulletin 439 Condensation risk in walls

### Manufacturers Documents

- Resene Construction Systems Technical Resources
- Resene Construction Systems TradeSpec
- Resene Construction Systems Project Guide
- Resene: Total Colour System

Copies of the above relevant company documents referred to in this specification are available at;

Resene Construction Systems

Web: [reseneconstruction.co.nz](http://reseneconstruction.co.nz)

Telephone: 0800 50 70 40

Resene Paints

Web: [resene.co.nz](http://resene.co.nz)

Telephone: 0800 RESENE (0800 737 363)

### No Substitutions

Substitutions are not permitted to any specified Resene Construction Systems system. Materials and execution to Resene Construction Systems specification except where varied by this specification and supported by architectural detailing.

## Qualifications

Use only LBP registered plasterers licensed to apply the Resene Construction Systems exterior render systems.

## Documentation

### Finish Sample

Submit one 300 mm x 300 mm sample of the selected texture finish and colour for approval on request by the main contractor or specifier. Obtain signature of acceptance on sample and return to the Registered Plasterer.

### Maintenance Instructions

Provide Resene Construction Systems Maintenance Guide on or before practical completion of the contract for issuing to the building owner. Resene Construction Systems Maintenance Guide to be provided on request.

### Producer Statement

If the project has a building consent then a producer statement shall be supplied by the plasterer in the form as required by the BCA.

## Health and Safety

Refer to the requirements of the Health and Safety in Employment Act 2015 and Worksafe NZ: Guidelines for the provision of facilities and general safety in the construction industry. If the elimination or isolation of potential hazards and risks is not possible then minimise hazards and risks in this work on site by using the proper equipment and techniques as required in the MPNZA Painters hazard handbook. Supply protective clothing and equipment. Inform employees and others on site of the hazards and put into place procedures for dealing with emergencies. Obtain from Resene Construction Systems the Material Safety Data Sheets for each product. Keep sheets on site and comply with the required safety procedures. Confirmation at the start of the project as to whether a Site Specific Safety Plan is to be produced by the Registered Plasterer prior to works starting.

## Warranty

Warrant this system under normal environmental and use conditions against failure. Resene Construction Systems system warranty.  
Materials: by Resene Construction Systems - 15 Years Materials only  
Execution: by Registered Plasterer - 5 Years Workmanship only

## OnSite Assistance

Allow to inspect the whole of the work at each stage. Determine a programme for onsite assistance including notification when each part and stage of the work is ready for inspection prior to the work commencing. Permit representatives of Resene Construction Systems to inspect the work in progress and to take samples of their products from site if requested.

## Components

### Graphex 50mm

- 2400 x 1200
- 50mm Thick
- Allow for 10% Wastage when Installing
- AS 1366 Part 3 Class H (with fire retardant).

### Hilti IDP 4/6

- Suitable for 60mm Substrates

### Rockcote PM100 Quick Render Base Coat

- Polymer-modified cement-based dry plaster mix. Supplied in 20 kg bags

[- View Technical Data Sheet](#) - [View Safety Data Sheet](#)

### RCS Blue Mesh (1200mm wide)

- Alkali Resistant 6mm x 5mm Weave mesh supplied in 50m rolls



[- View Technical Data Sheet](#)

## Rockcote PM100 Quick Render Level Coat

- Polymer-modified cement-based dry plaster mix. Supplied in 20 kg bags

[- View Technical Data Sheet](#) - [View Safety Data Sheet](#)

## Rockcote RenderPrime

- Water based acrylic polymer dispersion. Supplied in 15 litre pails.

[- View Safety Data Sheet](#)

## Bostik MS Sealant (Tubes)

- 550gm Cartridges

[- View Technical Data Sheet](#) - [View Safety Data Sheet](#)

## Rockcote Classico

- 100% acrylic, high-build texture coating. Supplied in 15 Litre pails

[- View Technical Data Sheet](#) - [View Safety Data Sheet](#)

## Resene X200 (2 Coats)

- Acrylic reinforced waterproof membrane. Supplied in 4 and 10 litre pails. Tinted to the selected colour

[- View Technical Data Sheet](#) - [View Safety Data Sheet](#)

## Installation

The following Resene Construction Systems TradeSpec® Documents can be found at <http://tradespec.co.nz>

All Technical Data Sheets are available at <https://reseneconstruction.co.nz/tds>

All Safety Data Sheets are available at <https://reseneconstruction.co.nz/sds>

- [Design Information - Refer to RCS TradeSpec™ document 1.2](#)
- [Checking Joinery - Refer to RCS TradeSpec™ document 1.3](#)
- [Light and Heavyweight Fixings - Refer to RCS TradeSpec™ document 1.9](#)
- [Fastening EPS / XPS / Graphex board - to solid filled masonry - Refer to RCS TradeSpec™ document 2.5](#)
- [Check and Prepare EPS / Graphex - Refer to RCS TradeSpec™ document 2.9](#)
- Rockcote PM100 Quick Render Base Coat
- RCS Mesh (Standard Weave)
- Rockcote PM100 Quick Render Levelling Coat
- Rockcote RenderPrime
- Rockcote Classico Texture Finish
- Resene X200 Paint Finish (2 Coats)
- [Light Reflectance Values \(LRV\) - Refer to RCS TradeSpec™ document 1.6](#)
- [Maintenance - Refer to RCS TradeSpec™ document 1.7](#)
- [Cleaning Up - Refer to RCS TradeSpec™ document 5.10](#)

### Important:

*This specification must be read in conjunction with the Resene Construction Systems technical drawings.*

*No alteration to the Resene Construction Systems RenderSpec® is permitted.*

*This Resene Construction Systems RenderSpec® must be read in conjunction with Resene Construction Systems TradeSpec® available at <http://tradespec.co.nz>*

*All Technical Data Sheets are available at <https://reseneconstruction.co.nz/tds>*

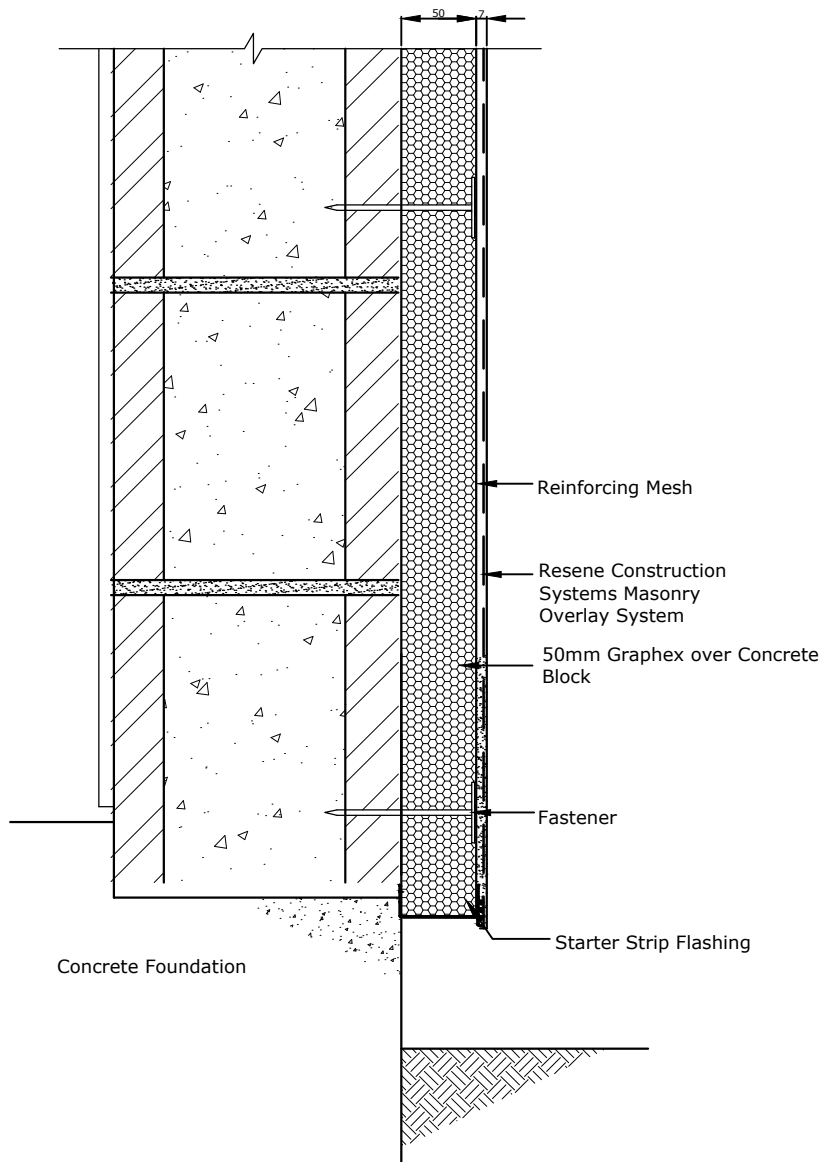
*All Safety Data Sheets are available at <https://reseneconstruction.co.nz/sds>*



Graphex Overlay Insulated Facade System  
Technical Drawings

Foundation  
External Corner  
Internal Corner  
Window Sill  
Window Jamb  
Window Head  
Soffit  
Roof Apron

Further details are available on our website [www.reseneconstruction.co.nz](http://www.reseneconstruction.co.nz)



Refer TradeSpec™ Document 1.2 for information on Ground Clearances

50mm rebate into the foundation for concrete block.

TradeSpec™ and RenderSpec™ are Registered Trademarks, both Documents are available on the Resene Construction Systems

**Resene**   
**Construction Systems**

CONFIDENTIALITY: No part of this publication may be reproduced or transmitted other than the intended use by Resene Construction Systems without written consent from the author.

System  
Masonry Overlay System

Substrate  
50mm Graphex over Concrete Block

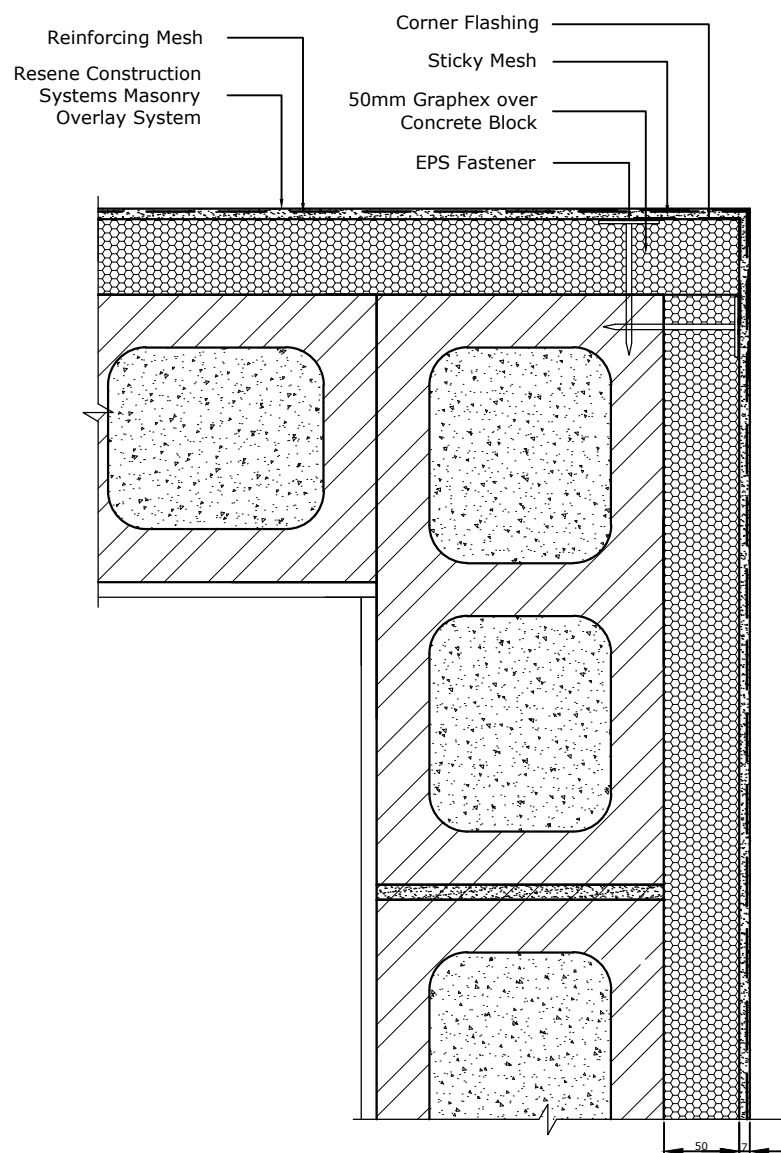
Drawing Name  
Foundation

Scale  
1 : 5 @ A4

Date  
14 June 2018

Sheet  
61.02.00





TradeSpec™ and RenderSpec™ are Registered Trademarks, both Documents are available on the Resene Construction Systems

**Resene**   
**Construction Systems**

CONFIDENTIALITY: No part of this publication may be reproduced or transmitted other than the intended use by Resene Construction Systems without written consent from the author.

System  
Masonry Overlay System

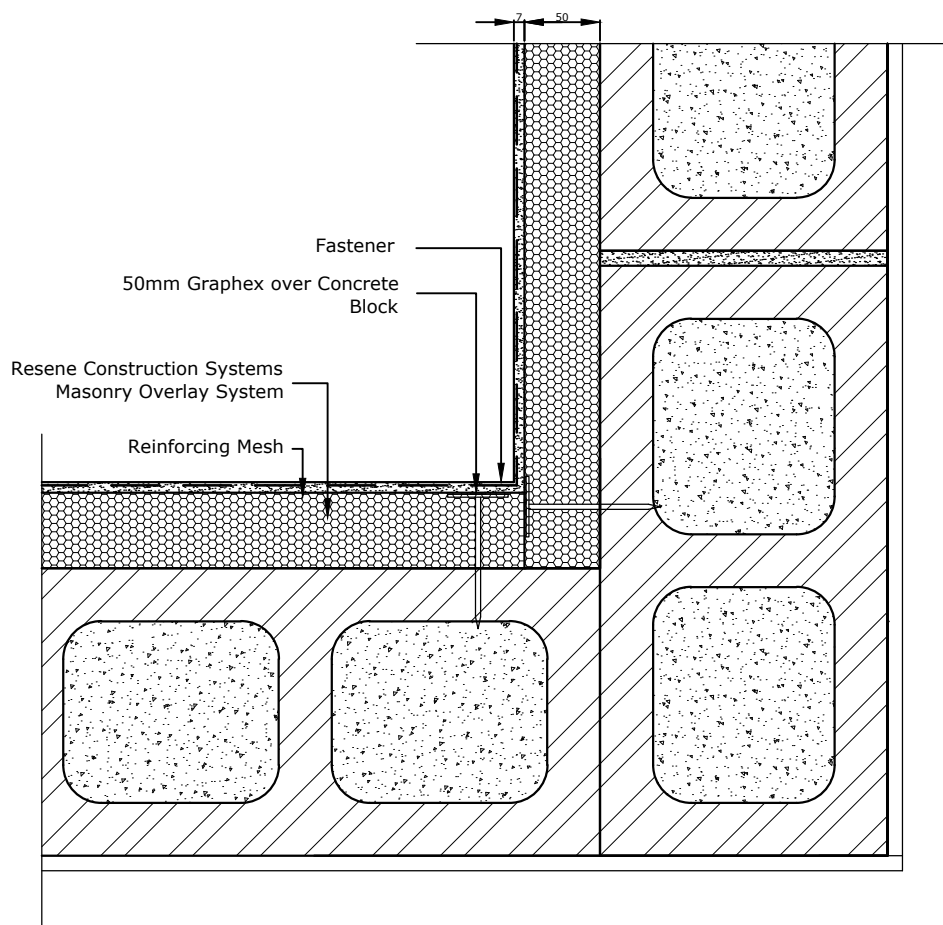
Substrate  
50mm Graphex over Concrete Block

Drawing Name  
External Corner

Scale  
1 : 2 @ A4

Date  
14 June 2018

Sheet  
61.03.00



TradeSpec™ and RenderSpec™ are Registered Trademarks, both Documents are available on the Resene Construction Systems

**Resene**   
**Construction Systems**

CONFIDENTIALITY: No part of this publication may be reproduced or transmitted other than the intended use by Resene Construction Systems without written consent from the author.

System  
Masonry Overlay System

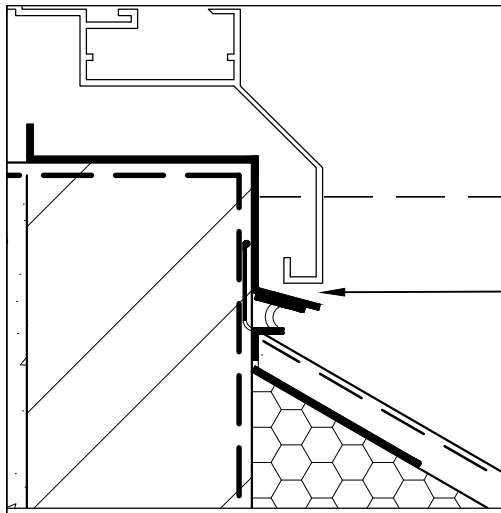
Substrate  
50mm Graphex over Concrete Block

Drawing Name  
Internal Corner

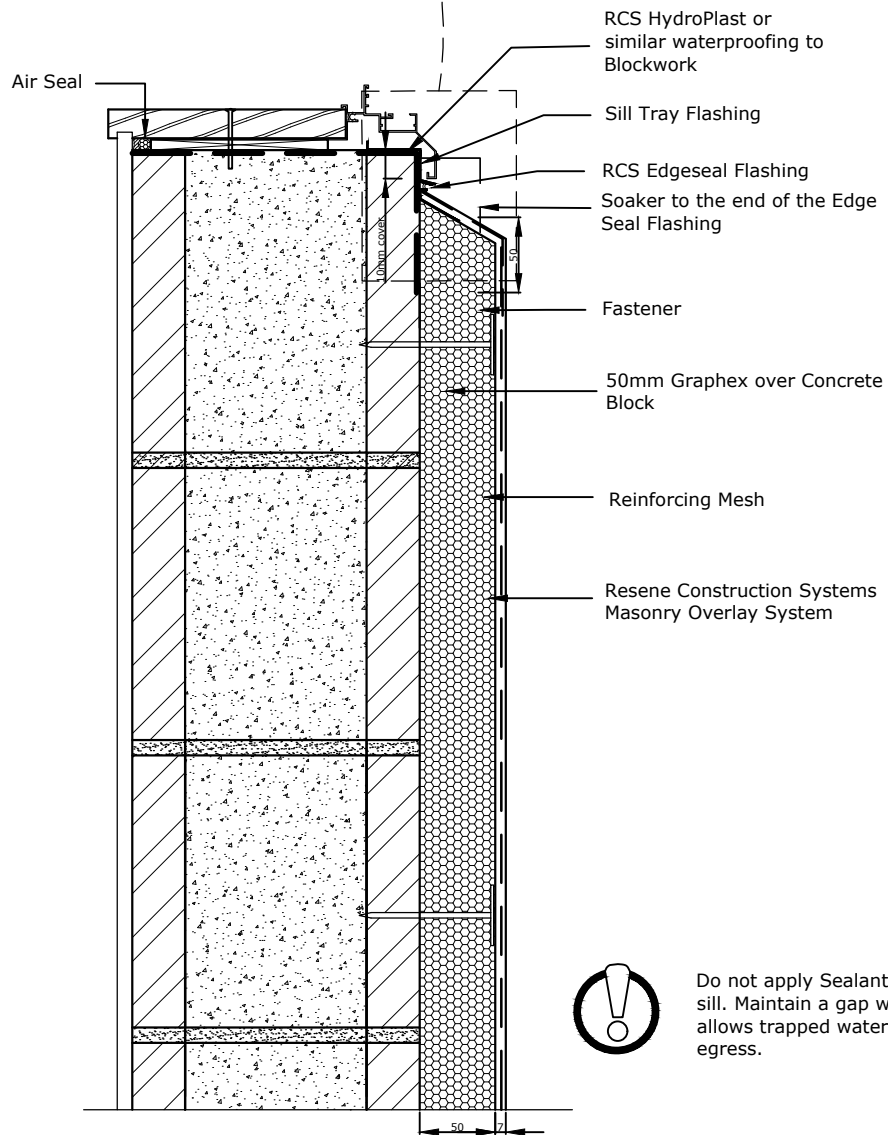
Scale  
1 : 2 @ A4

Date  
14 June 2018

Sheet  
61.04.00



5mm Gap



Do not apply Sealant to sill. Maintain a gap which allows trapped water to egress.

TradeSpec™ and RenderSpec™ are Registered Trademarks, both Documents are available on the Resene Construction Systems

**Resene**  
Construction Systems

CONFIDENTIALITY: No part of this publication may be reproduced or transmitted other than the intended use by Resene Construction Systems without written consent from the author.

System  
Masonry Overlay System

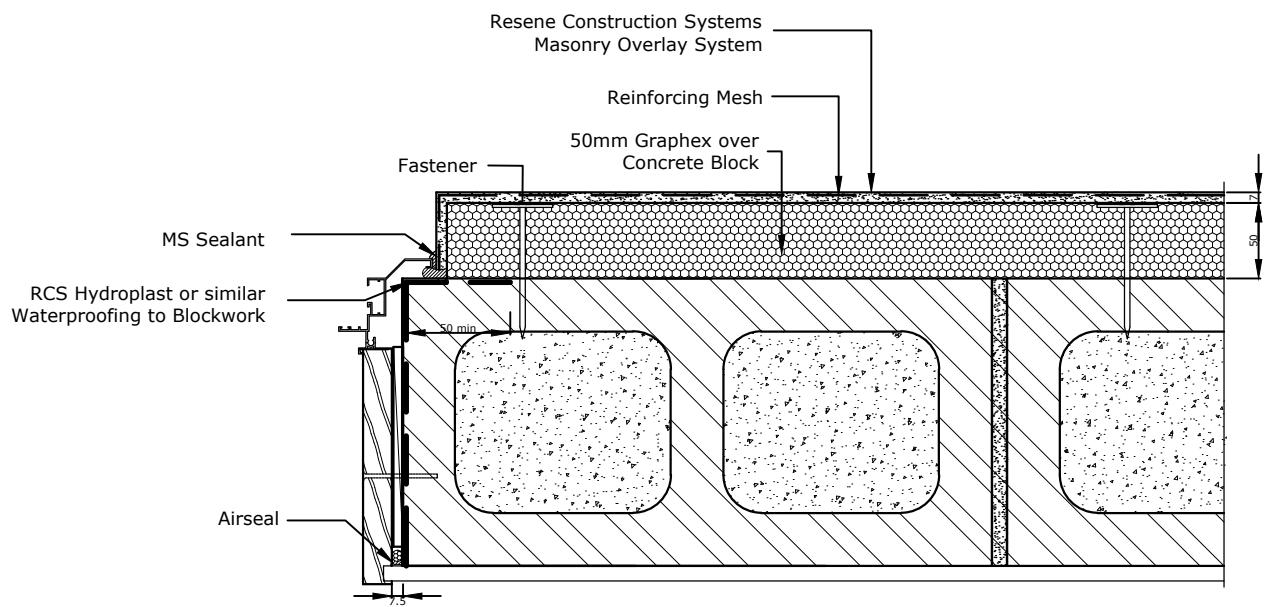
Substrate  
50mm Graphex over Concrete Block

Drawing Name  
Window Sill

Scale  
1 : 5 @ A4

Date  
14 June 2018

Sheet  
61.05.00



TradeSpec™ and RenderSpec™ are Registered Trademarks, both Documents are available on the Resene Construction Systems

**Resene**   
**Construction Systems**

CONFIDENTIALITY: No part of this publication may be reproduced or transmitted other than the intended use by Resene Construction Systems without written consent from the author.

System  
Masonry Overlay System

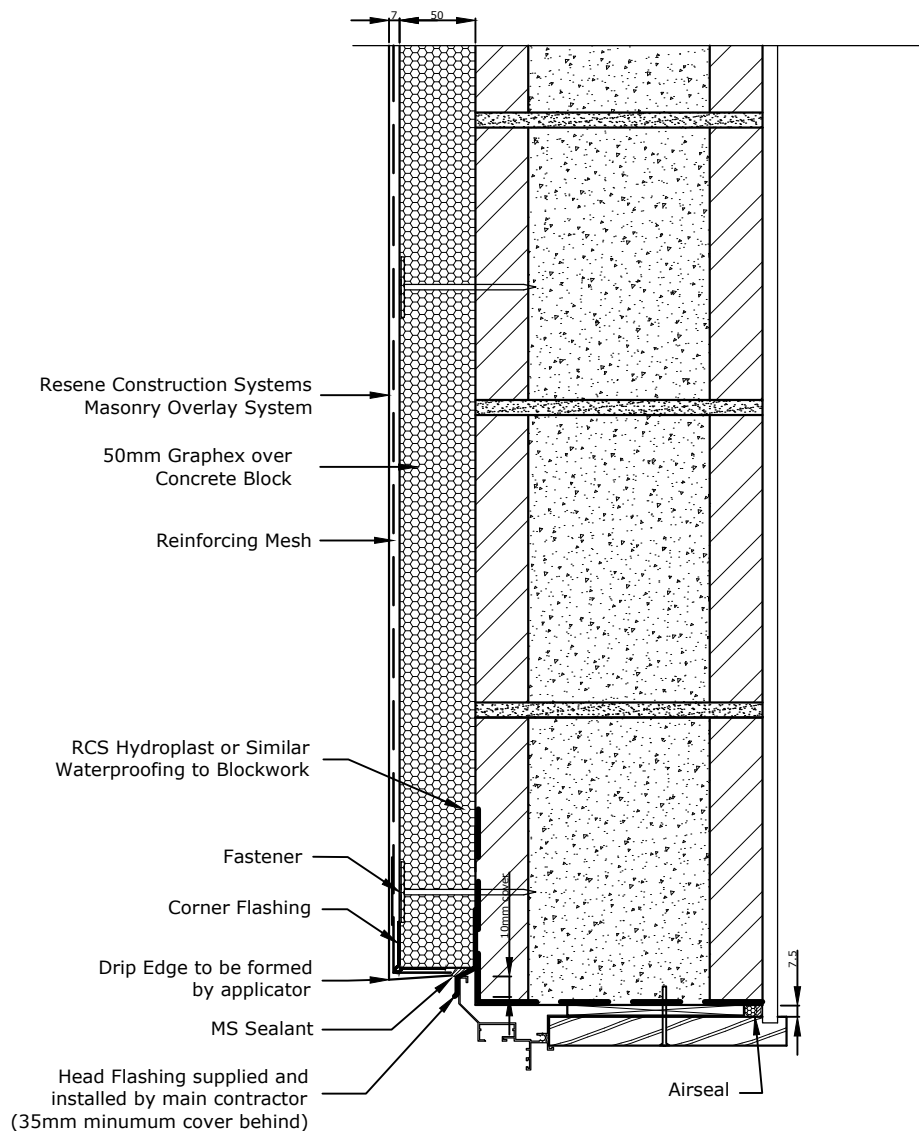
Substrate  
50mm Graphex over Concrete Block

Drawing Name  
Window Jamb

Scale  
1 : 2 @ A4

Date  
14 June 2018

Sheet  
61.06.00



Head Flashing to have a minimum 15° fall

The Head Flashing must be installed so that it extends 10mm either side of the jamb extrusion.

TradeSpec™ and RenderSpec™ are Registered Trademarks, both Documents are available on the Resene Construction Systems

**Resene**   
Construction Systems

CONFIDENTIALITY: No part of this publication may be reproduced or transmitted other than the intended use by Resene Construction Systems without written consent from the author.

System  
Masonry Overlay System

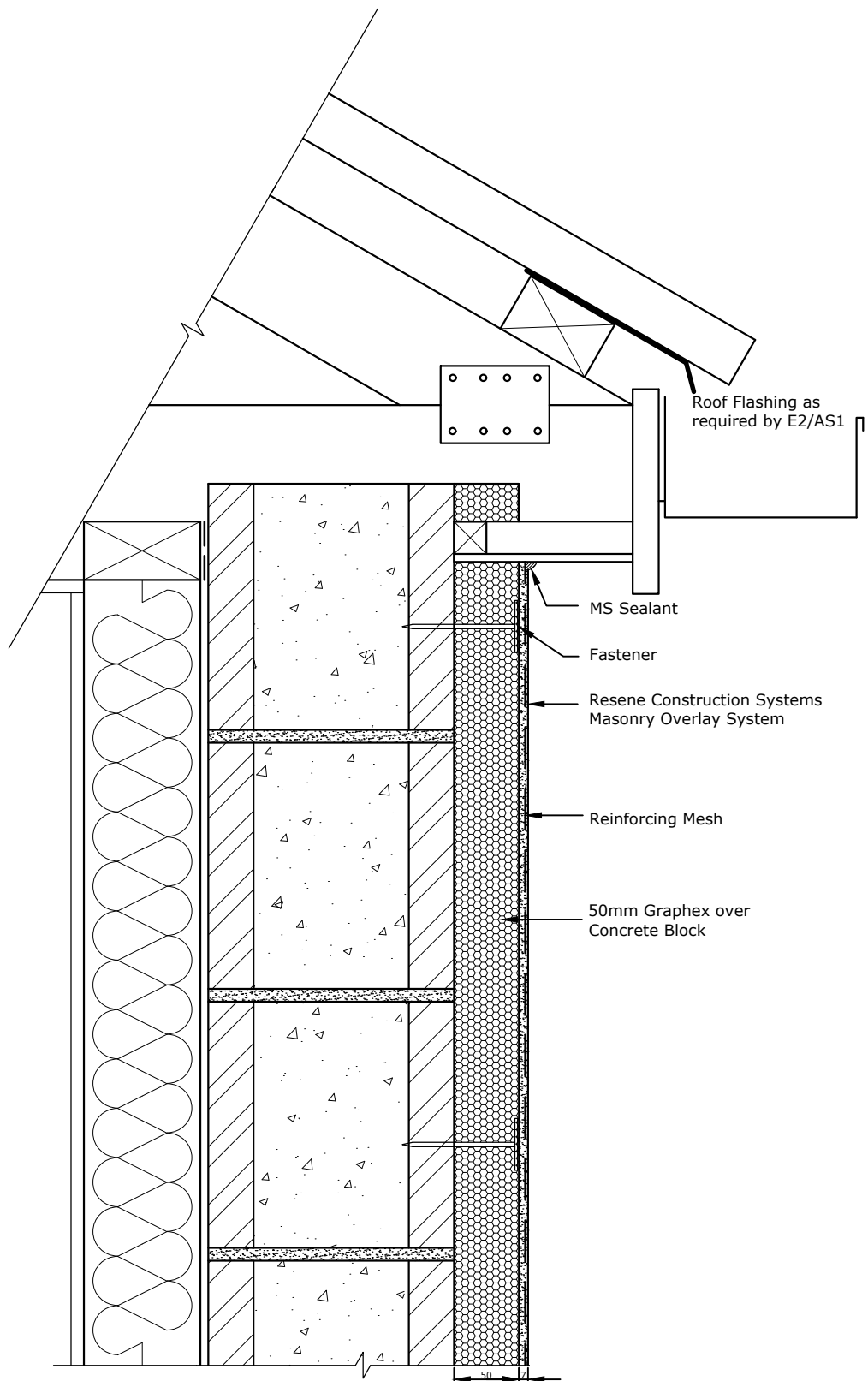
Substrate  
50mm Graphex over Concrete Block

Drawing Name  
Window Head

Scale  
1 : 5 @ A4

Date  
14 June 2018

Sheet  
61.07.00



TradeSpec™ and RenderSpec™ are Registered Trademarks, both Documents are available on the Resene Construction Systems

**Resene**   
**Construction Systems**

CONFIDENTIALITY: No part of this publication may be reproduced or transmitted other than the intended use by Resene Construction Systems without written consent from the author.

System  
Masonry Overlay System

Substrate  
50mm Graphex over Concrete Block

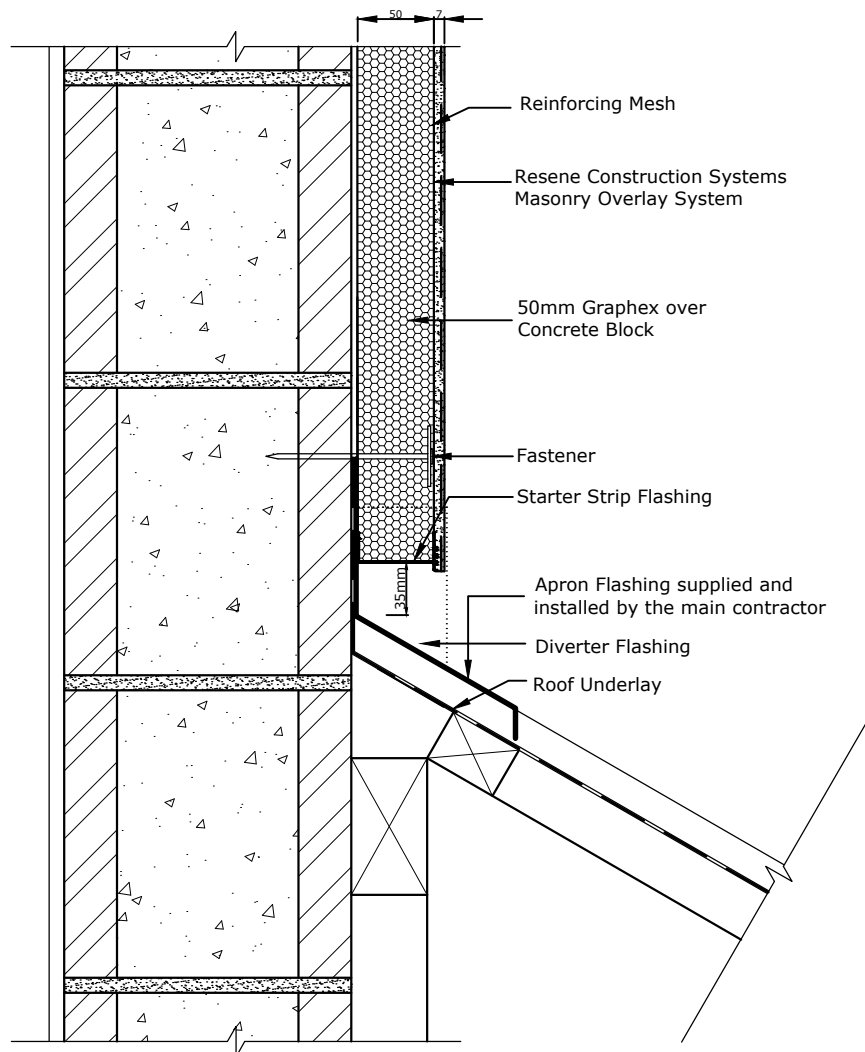
Drawing Name  
Soffit

Scale  
1 : 5 @ A4

Date  
14 June 2018

Sheet  
61.08.00





Refer TradeSpec™ Document 1.2 for  
information on Roof Clearances

TradeSpec™ and RenderSpec™ are Registered Trademarks, both Documents are available on the Resene Construction Systems

**Resene**   
**Construction Systems**

CONFIDENTIALITY: No part of this publication may be  
reproduced or transmitted other than the intended use by  
Resene Construction Systems without written consent from  
the author.

System  
Masonry Overlay System

Substrate  
50mm Graphex over Concrete Block

Drawing Name  
Roof Apron

Scale  
1 : 5 @ A4

Date  
14 June 2018

Sheet  
61.09.00

---

# Our Products

---

## Resene Construction Systems

---

Head Office  
PO Box 39108, Harewood, Christchurch. 8545  
5 Venture Place,  
Middleton,  
Christchurch 8024  
New Zealand  
Telephone: 03 338 6328  
Fax: 03 338 6819

---

Auckland  
Administration  
Telephone: 09 259 2732  
Fax: 09 443 4175

---

Auckland  
Distribution  
Telephone: 09 444 6440  
Fax: 09 443 4175

---

Wellington  
Telephone: 027 445 5503

---

Tauranga  
Telephone: 07 2811263  
Fax: 07 281 1274

---

The Resene Construction Systems network is  
New Zealand wide from Keri Keri in the North to  
Invercargill in the South.

Call our Onsite Assist 0800 50 70 40 for your  
nearest consultant or visit our website:  
[www.reseneconstruction.co.nz](http://www.reseneconstruction.co.nz)

## ROCKCOTE®

Premium plaster facade systems, pre-coloured, flexible  
acrylic and mineral coatings for interior and exterior use.

---

## Plaster Systems™

Mineral plasters, and textures for exterior and interior use.

---

## ARTISAN NATURAL MATERIALS

BY ROCKCOTE  
Bespoke range of natural plasters that enhance and define  
interior and exterior environments.

---

## NTEGRA

LIGHTWEIGHT CONCRETE SYSTEMS

Premium lightweight AAC concrete facade, flooring, and  
fencing systems. Providing impact, and acoustic  
resistance with the durability of lightweight concrete.

---

## Seismolock GRC

Reinforced plaster strengthening system offering an  
economical alternative to traditional post construction  
earthquake strengthening methods.

---

## graphex.

A graphite infused insulation panel specially designed to  
significantly improve external insulation of your project.

---

## Ezyplast

INTERIOR HARDWALLED PLASTER

Gypsum-based interior hardwall plaster hand applied over  
concrete blocks, masonry, bricks, metal lathe or plaster  
board.

---

## MULTI STOP

A range of patching, repairing and finishing plasters for  
masonry substrates.

---

## Villastop

Fine, sandable finishing plaster for use over cement sheet  
and other masonry substrates.

---

## Multiplast

Fibre cement sheet jointing system, and repair plaster.