

50mm AAC ENVIRO Panel
fixed through cavity battens
into post

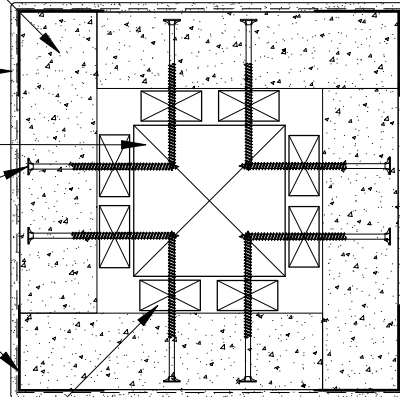
MASONS AAC render
& coating system

100x100 H4 Timber Post

14gx100mm Bugle Head
Type 17 Screws embedded
10mm max. into panel. Min
50mm from edge.

MASONS corner bead
glued in place with
BOSTIK safe seal x 4

40x20 H3.1 full height
cavity battens



AAC ENVIRO COLUMN/POST - Plan View

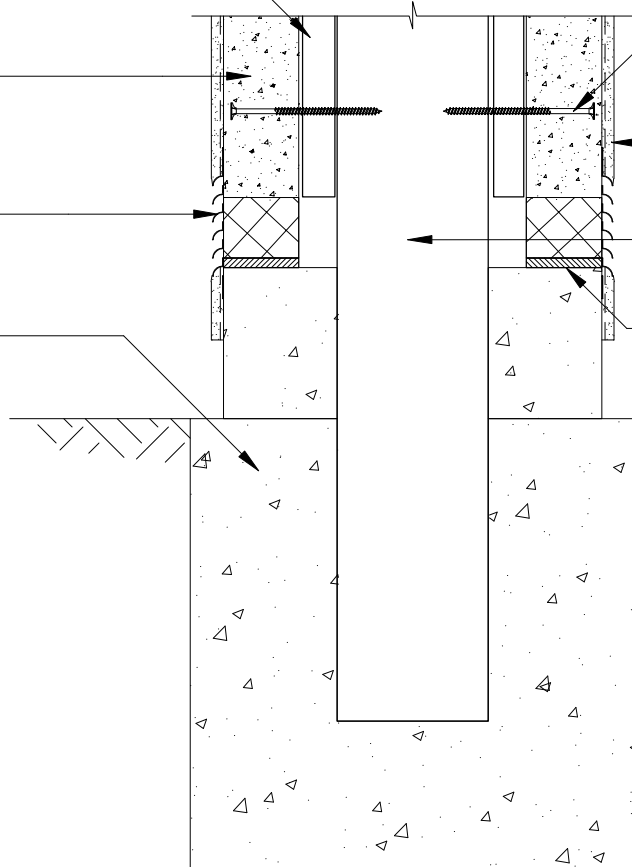
Detail 37 Scale 1:5

40x20 H3.1 full height
cavity battens

50mm AAC ENVIRO
Panel fixed through
cavity battens into post

50x100mm MASONS vents
glued to panel with BOSTIK
safe seal to cover holes

Concrete Foundation



14gx100mm Bugle Head
Type 17 Screws embedded
10mm max. into panel. Min
50mm from edge.

MASONS AAC render
& coating system

100x100 H4 Timber post

AAC ENVIRO Panel.
Seating on 70x100mm
high conc. footing

AAC ENVIRO COLUMN/POST - Section View

Detail 38 Scale 1:5

**MASONS ENVIRO AAC ON 20mm CAVITY
TIMBER FRAME**